



AGENDA

Rogers Parks and Recreation Advisory Commission

April 10, 2025 - 5:30 PM

1. CALL TO ORDER AND PLEDGE OF ALLEGIANCE

2. OPEN FORUM

Individuals may address the Council about any item not contained on the regular agenda. A maximum of 10 minutes is allocated for the Forum. If the full 10 minutes are not needed for the Forum, the Mayor will continue with the agenda. If additional time is needed for the Forum, the Council will continue the Forum following Other Business on the agenda. The Council will take no official action on items discussed at the Forum, with the exception of referral to staff of Commission for future report.

3. PRESENTATIONS

4. APPROVE AGENDA

Council members may add items to the agenda for discussion purposes or staff direction only. The Council will not normally take official action on items added to the agenda.

5. CONSENT AGENDA

These items are considered to be routine and will be enacted by one motion. There will be no separate discussion of these items unless a Councilmember so requests, in which event the item will be removed from the Consent Agenda and placed elsewhere on the agenda.

5.1 Approval of March 2025 Meeting Minutes

6. GENERAL BUSINESS

6.1 Territorial Park Plan Review

6.2 2025 Work Plan

7. OTHER BUSINESS

8. CORRESPONDENCE AND REPORTS

8.1 PRAC Correspondence and Staff Report

9. ADJOURN

[MEET_FOOT]



STAFF REPORT
**ROGERS PARKS AND
RECREATION ADVISORY
COMMISSION**

Meeting Date: April 10, 2025

Agenda Item: 5.1

Subject: Approval of March 2025 Meeting Minutes

Prepared By: Marcy Dalchow, Public Works Administrative Assistant

Recommended Council Action

Overview / Background / Analysis

Staff Recommendation

Financial Impact:

Source Fund:

Budgeted?

Supporting Documentation

A. March 13 2025 Park Commission Minutes

City of Rogers
Park and Recreation Advisory Commission Meeting Minutes
March 13, 2025

1. CALL TO ORDER AND PLEDGE OF ALLEGIANCE

The Park and Recreation Advisory Commission (PRAC) of the City of Rogers was called to order by Chair Dale Fuller on Thursday, March 13, 2025, at 5:31 pm in the Sunroom at Lions Central Park, 21400 Rouillard Ave., Rogers MN, 55374.

Roll Call

Dale Fuller	Parks and Recreation Advisory Commissioner - Chair	
Peggy Warfield	Parks and Recreation Advisory Commissioner - Vice Chair	
Paul Hacker	Parks and Recreation Advisory Commissioner	
Judi Volkers	Parks and Recreation Advisory Commissioner	
Mike Volkers	Parks and Recreation Advisory Commissioner	
Sam Okland	Parks and Recreation Advisory Commissioner	
Chris Morrow	Parks and Recreation Advisory Commissioner	
Shannon Klick	Rogers City Council - Mayor	Absent
Amy Enga	Rogers City Council	
Alexander Heuvels	Student Representative	Absent
Mike Bauer	Parks and Recreation Director	
Marcy Dalchow	Public Works Administrative Assistant	

Guests Present: Joe Lucht – Anderson Engineering, Kris Hofstedt, Bruce & Marcia Stengel, Dan & Nora Ryan, Steve Hornseth, Todd & Lisa Kussman, Sara Utes, Chris Techtenhagen, Jon Kinard, Hyma Rao Surabathuni, Diane Ensminger, Ashley & Ryan Wilson

2. OPEN FORUM None

3. PRESENTATIONS None

4. APPROVE AGENDA

4.1 Approval of Consent Agenda As Submitted

5. CONSENT AGENDA

5.1 Approval of the December 2024 Minutes (there was no meeting January 2025)

Motion to approve the December 2024 Minutes as submitted by Okland, seconded by Morrow. Motion carried 7/0.

6. GENERAL BUSINESS

6.1 Territorial Park Plan Review

In 2021, City Council approved a master plan for a park (now named Territorial Park) between Skye Meadows and Harvest View Neighborhoods. The 2025 Capital Improvement Plan includes construction of this park. After the PRAC reviewed the site plan and playground concepts in February, a mailing was sent out to over 200 residents, as well as posted to the City of Rogers Facebook page, inviting residents to tonight's meeting and asking for comments on the playground plan and suggestions for a piece of playground equipment.

This park presents some unique challenges because of its wetland. Because of the many trails to be included in this park, the trails could be built in phases. Public comments were received regarding privacy for residents, safety for those who visit the park, lighting, construction and materials for the boardwalk, parking and playground equipment color and options. After much discussion, the items below were identified as priorities.

- Accessibility
- Color selection will need to be done later.
- PFA – Check on this to see if equipment approved.
- Double poles on swings rather than single
- The consensus was to use the tree house from option 2 and the smaller play items from option 1.
- Move the shelter to the other side of the park
- Check on boardwalk material and ask if a sound barrier is available.

6.2 Set Summer Meeting Schedule

The Parks and Recreation Advisory Commission (PRAC) has held meetings in parks within the community during the months of June, July, and September for the past several years. Staff promote these meetings with signs, Facebook posts and have experienced good attendance at these meetings. The PRAC and staff would like to do this again in 2025. After discussion, the PRAC has set the schedule for meetings in the park during the summer of 2025 to be:

- June – SCP
- July - Fox Creek West
- September – Sunnyside

6.3 Indoor Playground Vendor Selection

At the request of the PRAC, staff have been researching indoor playground options for the mezzanine level of the indoor turf facility. Two final concepts were reviewed during this meeting. Below are some of the things the PRAC would like to be included as well as some important comments about the play structure.

- PRAC liked the theming using Rogers sports, but it makes it difficult to see kids in the play structure. Some of this could be added later. The play structure could expand in phases as well.
- The PRAC would like a giant slide, top to bottom (👉).
- Look at an overlook bubble
- Parts of the play structure could cantilever over the railing.
- It is accessible on different levels - some items could be moved (i.e. punching bag) to make them even more accessible.
- Activity Panel Choices – Under the Sea, Colors & Shapes, and Robot Factory
- The play structure will be grounded and anchored to avoid static shock.

6.4 Reservoir Fields/Tennis Club Parking Lot Light Project

We have received a request for lights in the Reservoir Fields parking lot, this is a city owned parking lot, and it is shared with the Rogers Tennis Club. We currently have a budget-friendly supplier, and the Tennis Club would like a proposal to consider and is interested in partnering with the City on this project. The total project is estimated to be \$11,000. The PRAC recommended staff work with the Tennis Center to get the lights installed on this lot, and to discuss who is responsible to pay for the electric to operate the lights.

6.5 2025 Work Plan Reviewed

Highlights:

- Duffy is set to close in May on the Main Street property. Construction will begin thereafter. It is hoped there is a permanent space for the Rogers Seniors there.
- Organizations are eager to purchase turf time for next fall and winter.

- Progress is continuing for the buildings at South Community Park and the indoor turf facility.

7. OTHER BUSINESS None

8. CORRESPONDENCE AND REPORTS

8.1 Staff Report and Correspondence Reviewed

Highlights:

- Dog waste left on trails, in parks and neighborhoods is becoming an increasingly large problem. The PRAC would like to know how to conquer this issue. Have any other cities conquered it?
- Staff are trying to find another location for additional community gardens. This location must have water available.

9. ADJOURN

Motion to Adjourn at 7:21 pm by Morrow, seconded by Warfield. Motion carried 7-0.



STAFF REPORT

ROGERS PARKS AND RECREATION ADVISORY COMMISSION

Meeting Date: April 10, 2025

Agenda Item: 6.1

Subject: Territorial Park Plan Review

Prepared By: Mike Bauer, Parks & Recreation Director

Recommended Council Action

Overview / Background / Analysis

In 2021, at the recommendation of the Parks and Recreation Advisory, the City Council approved a master plan for Territorial Park between the Skye Meadows and Harvest View Neighborhoods. The 2025 Capital Improvement Plan includes the park's construction in this year's budget. The funding for the Park will come from the Park Dedication fund, which is supplied by the developer's fees to build out parks in the community. In 2024, the final design and construction services professional services agreement was assigned to Anderson Engineering.

After the review of the Site Plan and playground concepts last month, over 200 residents (all occupied homes within 300 feet of the park) were mailed and the City of Rogers Facebook page was asked for comments and suggestions for a piece of playground equipment.

The March meeting was advertised for public comment on the park project. While this is not a public hearing, and a mailing was not required, the Parks and Recreation Advisory Commission welcomed public input on the project. Joe Lucht, the Landscape Architect with Anderson Engineering and Staff, reviewed the Site Plan and answered questions from the Commission and the public in attendance.

After the meeting, public input was utilized, and the updates are attached. Joe Lucht and Tim Solomonson, the Project Manager for Midwest Play Scapes, the playground supplier, will be on hand.

Staff Recommendation

Review the plan and make a recommendation on how to proceed with the project.

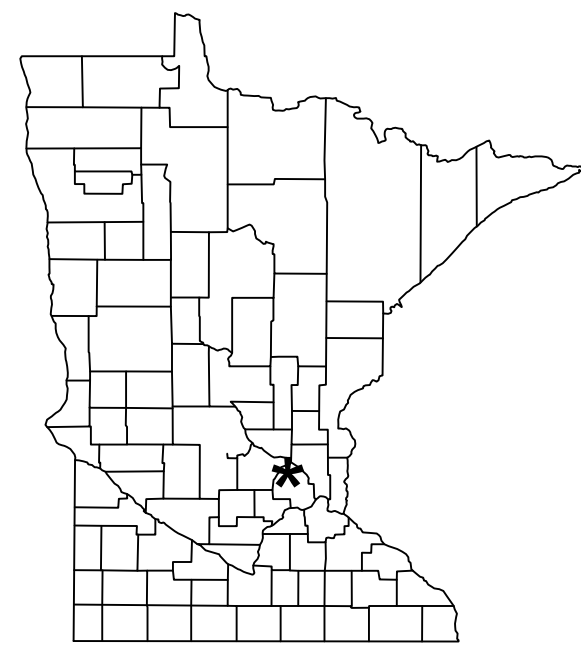
Financial Impact:

Source Fund:

Budgeted? Yes

Supporting Documentation

- A. 18445_RogersTerritorialPark-75%CD's_20250408
- B. 18445_TerritorialParkEstimate_20250408
- C. Territorial - Quote v4
- D. Territorial Park_20250220_01_02_Renders



CONSTRUCTION DOCUMENTS

FOR

TERRITORIAL PARK

ROGERS, MN

OWNER/CONTACT

CITY OF ROGERS
 MIKE BAUER
 PARKS AND RECREATION DIRECTOR
 22350 S. DIAMOND LAKE RD.
 ROGERS, MN 55374

SURVEY / ENGINEER

ANDERSON ENGINEERING OF MN, LLC
 13605 1ST AVENUE NORTH, SUITE 100
 PLYMOUTH, MN 55441



TERRITORIAL PARK

ASHBURY DRIVE
 ROGERS, MN 55374

CITY OF ROGERS

95% CONSTRUCTION DOCUMENTS

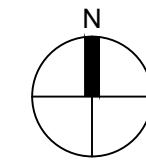
NOT FOR CONSTRUCTION

SHEET INDEX

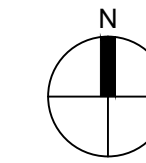
SHEET	DESCRIPTION
C001	COVER SHEET
C100	EXISTING CONDITIONS & DEMOLITION PLAN
C101	SITE PLAN
C102	GRADING, EROSION CONTROL & DRAINAGE PLAN
C103	STORMWATER POLLUTION PREVENTION PLAN
C104	STORMWATER POLLUTION PREVENTION PLAN
C105	LANDSCAPE PLAN
C106	DETAILS
C107	DETAILS
C108	DETAILS



1 SITE LOCATION MAP
 SCALE: N.T.S.



2 VICINITY MAP
 SCALE: N.T.S.



GENERAL NOTES

- UNTIL THE REVISION BLOCK INDICATES "ISSUED FOR CONSTRUCTION," THE PLAN SET IS NOT CERTIFIED FOR CONSTRUCTION, AND THE CONTRACTOR ASSUMES ALL RISKS ASSOCIATED WITH BUILDING.
- BASED ON AN EXISTING CONDITIONS SURVEY CONDUCTED BY ANDERSON ENGINEERING IN SEPTEMBER 2024, THE EXISTING CONDITIONS PRESENTED ARE SUBJECT TO VARIATION. THE CONTRACTOR MUST VERIFY SITE CONDITIONS AND PROMPTLY COMMUNICATE ANY DISPARITIES IN WRITING TO THE ENGINEER.
- UTILITY QUALITY LEVEL C IS APPLIED TO THE SUBSURFACE UTILITY INFORMATION IN THIS PLAN, DETERMINED ACCORDING TO C/ASCE 38-2 GUIDELINES. THE PRECISE LOCATION AND DEPTH OF SUBSURFACE UTILITIES, INCLUDING GAS, TELEPHONE, FIBER OPTIC, SEWER, WATER, PIPELINES, ELECTRICAL, AND CABLE TV, ARE UNKNOWN, AND THE INFORMATION SHOULD NOT BE RELIED UPON AS EXACT OR COMPLETE.
- PRIOR TO STARTING WORK, THE CONTRACTOR MUST CONTACT GOPHER STATE ONE CALL (1-800-252-1166) AT LEAST 48 HOURS IN ADVANCE (EXCLUDING HOLIDAYS AND WEEKENDS) TO DETERMINE THE LOCATIONS OF UNDERGROUND UTILITIES.
- PRIVATE UTILITY CONFLICTS SHOULD BE ANTICIPATED BY THE CONTRACTOR IN PROJECT SUBCUT AND TRENCH AREAS. THE CONTRACTOR MUST COORDINATE WITH UTILITY OWNERS FOR RELOCATION OR PROTECTION OF EXISTING UTILITIES, OR INSTALLATION OF NEW UTILITIES, WITH ALL ASSOCIATED COSTS BEING THE CONTRACTOR'S RESPONSIBILITY AND INCURRED WITH NO ADDITIONAL COST TO THE OWNER.
- QUANTITIES ARE APPROXIMATE AND MAY VARY TO ENSURE SUCCESSFUL COMPLETION OF THE WORK.
- COMPLIANCE WITH CITY, COUNTY, STATE, AND FEDERAL (INCLUDING OSHA) REGULATIONS AND CODES IS MANDATORY FOR ALL WORK AND MATERIALS.
- COORDINATION OF WORK WITH OTHER CONTRACTORS OPERATING AT OR NEAR THE SITE IS THE RESPONSIBILITY OF THE CONTRACTOR.
- THROUGHOUT CONSTRUCTION, THE CONTRACTOR MUST COORDINATE AND MAINTAIN ACCESS TO ADJACENT PROPERTIES.
- THE CONTRACTOR IS TASKED WITH COORDINATING AND MAINTAINING MAIL, GARBAGE, AND RECYCLING SERVICES TO PROPERTIES DURING CONSTRUCTION.
- RESPONSIBILITY FOR COORDINATING AND MAINTAINING STORMWATER DRAINAGE CONVEYANCE THROUGHOUT CONSTRUCTION, BOTH PIPED AND OVERLAND FLOW, LIES WITH THE CONTRACTOR.
- COORDINATION AND MAINTENANCE OF WATER AND SANITARY FLOW TO AND FROM PROPERTIES ARE THE CONTRACTOR'S RESPONSIBILITY.
- THE CONTRACTOR MUST COORDINATE AND MAINTAIN UTILITY SERVICES TO ADJACENT PROPERTIES AT ALL TIMES. UTILITY SERVICE INTERRUPTION IS PERMITTED ONLY WITH APPROVAL FROM THE OWNER, CITY, AND ADJACENT PROPERTIES.
- COORDINATION WITH UTILITY SERVICES FOR SMALL UTILITY INSTALLATION FALLS UNDER THE CONTRACTOR'S RESPONSIBILITY.
- UNLESS SHOWN OR NOTED OTHERWISE, CONSTRUCTION LIMITS EXTEND TO THE PROPERTY LINE. CONSTRUCTION ACTIVITIES MUST BE RESTRICTED TO DESIGNATED AREAS AS INDICATED ON THE PLANS.
- PRESERVATION AND PROTECTION OF EXISTING PAVEMENT, SITE FEATURES, UTILITIES, TREES, ETC., IS THE CONTRACTOR'S RESPONSIBILITY UNLESS OTHERWISE INDICATED.
- THE CONTRACTOR MUST DOCUMENT EXISTING CONDITIONS THROUGH PHOTOS OR VIDEOS BEFORE CONSTRUCTION BEGINS. THIS INCLUDES ITEMS DESIGNATED TO REMAIN THAT MIGHT BE MISCONSTRUED AS DAMAGE CAUSED BY CONSTRUCTION OPERATIONS. ADEQUATELY DETAILED PHOTOGRAPHS OR VIDEO RECORDINGS, ALONG WITH PLANS AND NOTATIONS, MUST BE SUBMITTED TO THE ENGINEER AND OWNER BEFORE CONSTRUCTION BEGINS. ANY DAMAGE TO EXISTING PAVEMENT, CURBING, STRIPING, OR OTHER SITE FEATURES MUST BE REPLACED BY THE CONTRACTOR TO THE OWNER'S SATISFACTION, AT NO ADDITIONAL COST TO THE OWNER.
- THE CONTRACTOR IS SOLELY RESPONSIBLE FOR TAKING ALL NECESSARY PRECAUTIONS TO AVOID PROPERTY DAMAGE TO ADJACENT PROPERTIES DURING CONSTRUCTION.
- BEFORE COMMENCING WORK, THE CONTRACTOR MUST NOTIFY THE OWNER AND ENGINEER IN WRITING OF ANY DISCREPANCIES OR CONFLICTS IN THE CONTRACT DOCUMENTS. NO FIELD CHANGES OR DEVIATIONS ARE PERMITTED WITHOUT PRIOR WRITTEN APPROVAL FROM THE ENGINEER. FAILURE TO NOTIFY THE OWNER AND ENGINEER OF IDENTIFIABLE CONFLICTS BEFORE INSTALLATION RELIEVES THE OWNER AND ENGINEER OF ANY OBLIGATION TO PAY FOR A RELATED CHANGE ORDER.
- ONE COPY OF EACH REQUIRED CONSTRUCTION PERMIT AND THE MOST CURRENT AND COMPLETE SET OF CONSTRUCTION DOCUMENTS, INCLUDING PLANS, SPECIFICATIONS, GEOTECHNICAL REPORT, SPECIAL CONDITIONS AND PROVISIONS, ETC., MUST BE AVAILABLE AT THE PROJECT SITE AT ALL TIMES.
- FULLY IMPLEMENTING AND ENFORCING SAFE WORK PRACTICES, INCLUDING BUT NOT LIMITED TO PERSONNEL MONITORING, USE OF TRENCHING, SHEETING, AND SHORING, SCAFFOLDING, MATERIALS HANDLING AND DRILLING, OPERATION OF EQUIPMENT, AND ENSURING PUBLIC SAFETY DURING WORK PROGRESS, IS THE CONTRACTOR'S RESPONSIBILITY.
- PLANNING FOR AND ENSURING PERSONNEL COMPLY WITH OSHA SAFETY AND HEALTH STANDARDS (29 CFR 1910) AND GENERAL CONSTRUCTION STANDARDS (29 CFR 1926) IS PART OF THE CONTRACTOR'S RESPONSIBILITIES.
- INITIATING, MAINTAINING, AND SUPERVISING SAFETY PRECAUTIONS AND PROGRAMS THROUGHOUT THE WORK PROJECT IS THE CONTRACTOR'S RESPONSIBILITY. ENSURING THE SAFETY OF EMPLOYEES ON THE PROJECT SITE AND OTHER AFFECTED PERSONS AND ORGANIZATIONS IS CRITICAL FOR THE CONTRACTOR. SAFETY DUTIES AND RESPONSIBILITIES EXTEND UNTIL ALL WORK IS COMPLETE, AND THE ENGINEER ISSUES NOTICE THAT THE WORK IS FINISHED.
- HAZARDOUS MATERIALS, SUCH AS OIL, GASOLINE, PAINT, AND OTHER HAZARDOUS SUBSTANCES, MUST BE PROPERLY STORED BY THE CONTRACTOR. THIS INCLUDES SECONDARY CONTAINMENTS TO PREVENT SPILLS, LEAKS, OR OTHER DISCHARGES. ACCESS TO STORAGE AREAS MUST BE RESTRICTED TO PREVENT VANDALISM. HAZARDOUS WASTE STORAGE AND DISPOSAL MUST COMPLY WITH MPCA REGULATIONS. IMMEDIATE REMOVAL OF SPILLS OF FUELS, OILS, OR OTHER CHEMICALS UPON DETECTION IS THE CONTRACTOR'S RESPONSIBILITY.

REVISION LOG

NO.	DATE	DESCRIPTION OF REVISIONS

APRIL 2, 2025

DESIGNED:	DRAWN:	CHECKED BY:
ST	ST	JL

DRAWING TITLE

COVER SHEET

DRAWING NO.

C001

PLOTTED:	COMM. NO.
----	18445



ANDERSON

13605 1st Avenue N. #100
Plymouth, MN 55441 | ae-mn.com
P 763.412.4000 | F 763.412.4090
Anderson Engineering of Minnesota, LLC

TERRITORIAL PARK

ASHBURY DRIVE
ROGERS, MN 55374

CITY OF ROGERS

95% CONSTRUCTION DOCUMENTS

NOT FOR CONSTRUCTION

REVISION LOG

NO.	DATE	DESCRIPTION OF REVISIONS

APRIL 2, 2025

DESIGNED:	DRAWN:	CHECKED BY:
ST	ST	JL

DRAWING TITLE

EXISTING CONDITIONS AND DEMOLITION PLAN

DRAWING NO.

C100

PLOTTED:	COMM. NO.
---	18445

DEMOLITION NOTES

- THE CONTRACTOR SHALL SALVAGE AND REINSTALL STREET AND TRAFFIC SIGNS IN CONFLICT WITH CONSTRUCTION ACTIVITIES AS INDICATED OR DIRECTED BY THE ENGINEER. ANY DAMAGE TO SIGNS DURING CONSTRUCTION REQUIRES THE CONTRACTOR TO PROVIDE NEW SIGNS AT NO ADDITIONAL COST TO THE OWNER.
- COORDINATION OF UTILITY REMOVAL WORK MUST BE CARRIED OUT BY THE CONTRACTOR IN CONSULTATION WITH THE APPROPRIATE UTILITY OWNER.
- THE CONTRACTOR IS TO SAWCUT FULL DEPTH AT PAVEMENT REMOVAL LIMITS AND AS REQUIRED TO ENSURE A SMOOTH FIT/TRANSITION ALONG MATCHING PAVEMENT AREAS.
- CLEARING AND GRUBBING OPERATIONS MUST ADHERE TO THE FOLLOWING GUIDELINES:
 - PROTECT ALL TREES AND PLANTS NOT DESIGNATED FOR REMOVAL.
 - CONDUCT OPERATIONS TO AVOID DAMAGE TO PROTECTED TREES AND VEGETATION.
 - CUT, REMOVE, AND DISPOSE OF TREES, BRUSH, SHRUBS, WINDFALLS, LOGS, STUMPS, ROOTS, FALLEN TIMBER, AND OTHER VEGETATION.
 - DISPOSE OF DEBRIS ACCORDING TO APPLICABLE REGULATIONS.
 - NO BURYING OF CLEARED AND GRUBBED WASTE WITHIN THE CONSTRUCTION LIMITS.
- UNLESS OTHERWISE STATED, THE CONTRACTOR IS RESPONSIBLE FOR REMOVAL AND DEMOLITION WITHIN ALL AREAS OF PROPOSED IMPROVEMENTS. REMOVAL LIMITS AS INDICATED ON THE DRAWINGS IN ANTICIPATED LOCATIONS. THE CONTRACTOR IS RESPONSIBLE FOR REMOVALS NECESSARY TO CONSTRUCT NEW IMPROVEMENTS AND MEET DESIGN REQUIREMENTS.
- THE CONTRACTOR MUST REVIEW FEATURES NOT SPECIFICALLY IDENTIFIED ON THE PLAN TO DETERMINE SALVAGE OR REMOVAL THAT MAY CONFLICT WITH CONSTRUCTION. IN CONSULTATION WITH THE ENGINEER.
- THE CONTRACTOR IS REQUIRED TO OBTAIN PERMITS NECESSARY FOR DEMOLITION, REMOVAL, AND DISPOSAL.
- MATERIALS REMOVED OR DEMOLISHED BY THE CONTRACTOR BECOME THE PROPERTY OF THE CONTRACTOR UNLESS OTHERWISE STATED. THE CONTRACTOR IS RESPONSIBLE FOR LOADING, HAULING, AND PROPERLY DISPOSING OF MATERIALS IN COMPLIANCE WITH APPLICABLE REGULATIONS. THE SITE MUST BE LEFT IN A CONDITION SATISFACTORY TO THE OWNER AND ENGINEER.
- THE CONTRACTOR MUST DOCUMENT EXISTING CONDITIONS THROUGH PHOTOS OR VIDEOS BEFORE CONSTRUCTION BEGINS. THIS INCLUDES ITEMS DESIGNATED TO REMAIN THAT MIGHT BE MISCONSTRUED AS DAMAGE CAUSED BY CONSTRUCTION OPERATIONS. ADEQUATELY DETAILED PHOTOGRAPHS OR VIDEO RECORDINGS ALONG WITH PLANS AND NOTATIONS, MUST BE SUBMITTED TO THE ENGINEER AND OWNER BEFORE CONSTRUCTION BEGINS. ANY DAMAGE TO EXISTING PAVEMENT, CURBING, STRIPING, OR OTHER SITE FEATURES MUST BE REPLACED BY THE CONTRACTOR TO THE OWNER'S SATISFACTION, AT NO ADDITIONAL COST TO THE OWNER.

LEGEND

- | | |
|--|-------------------------------|
| | PROPERTY LINE |
| | CONSTRUCTION LIMITS |
| | DELINEATED WETLAND (BY OWNER) |
| | WETLAND SETBACK |
| | EXISTING STORM SEWER |
| | EXISTING STRM INLET |
| | EXISTING SAN/STRM MANHOLE |
| | EXISTING HYDRANT |
| | REMOVE UTILITY |
| | EXISTING CONCRETE |
| | EXISTING RETAINING WALL |
| | RETAINING WALL REMOVAL |
| | REMOVE EXISTING PAVEMENT |
| | REMOVE CONCRETE C&G |
| | EXISTING FENCE |
| | EXISTING UNDERGROUND ELECTRIC |
| | TREE TO BE REMOVED |
| | SILT FENCE |
| | ROCK CONSTRUCTION ENTRANCE |

KEYNOTES:

- | | |
|--|---------------------------------------------|
| | SAWCUT CONCRETE PAVEMENT - FULL DEPTH |
| | REMOVE TREE |
| | REMOVE FENCE |
| | PROTECT AND MAINTAIN EXISTING STORM OUTLETS |

CALL 48 HOURS BEFORE DIGGING:
GOPHER STATE ONE CALL
TWIN CITY AREA (651)454-0002
MINNESOTA TOLL FREE 1-800-252-1166

0 40' 80'



ADD ALTERNATE 1

TERRITORIAL PARK

ASHBURY DRIVE
 ROGERS, MN 55374

CITY OF ROGERS

95% CONSTRUCTION DOCUMENTS

NOT FOR CONSTRUCTION

REVISION LOG

NO.	DATE	DESCRIPTION OF REVISIONS

APRIL 2, 2025

DESIGNED:	DRAWN:	CHECKED BY:
ST	ST	JL

DRAWING TITLE


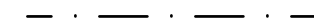







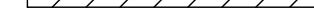
SITE PLAN

DRAWING NO.

C101

PLOTTED:	COMM. NO.
----	18445

LEGEND

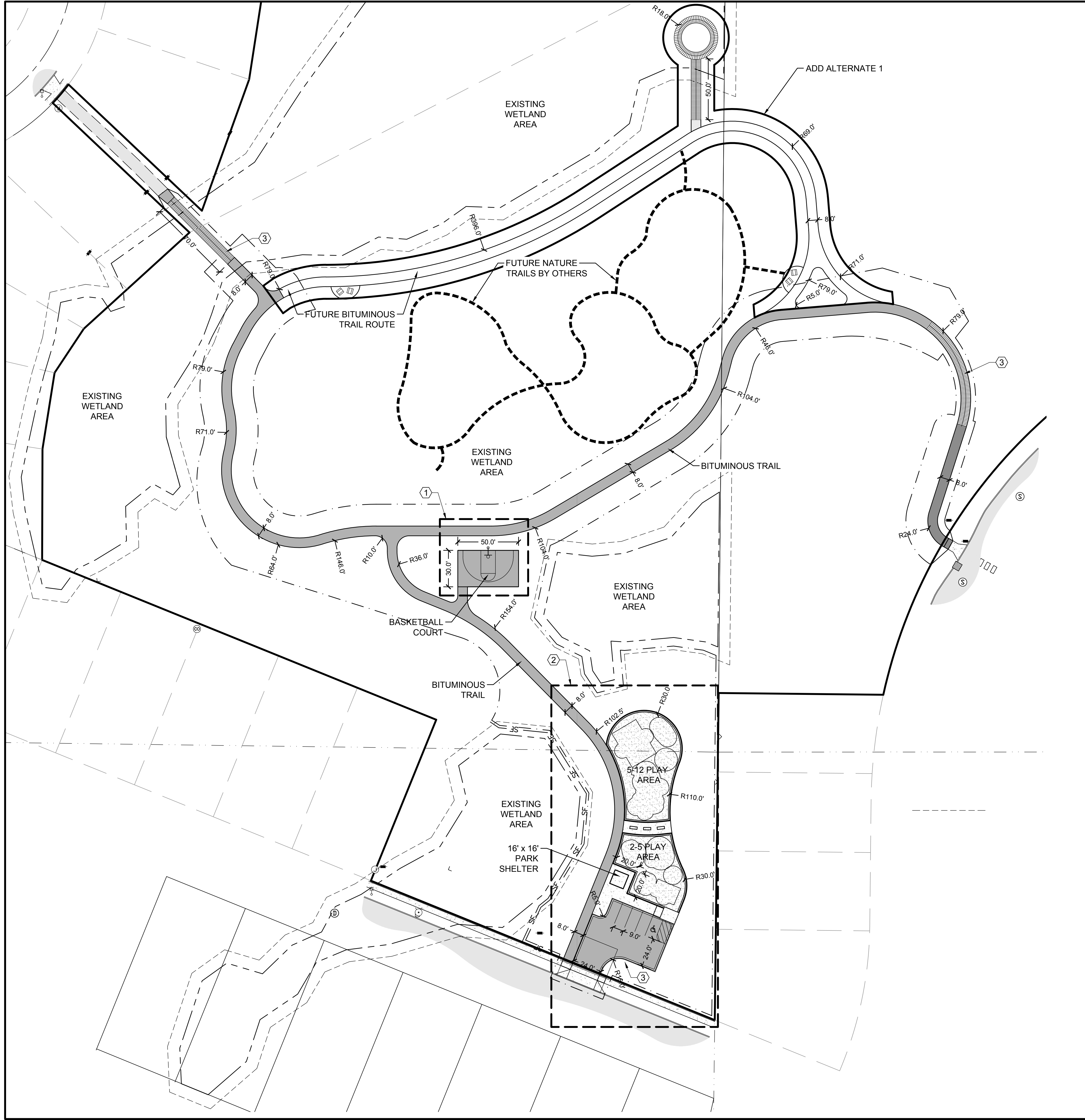
-  PROPERTY LIMITS
-  CONSTRUCTION LIMITS
-  ADJACENT PROPERTY
-  DELINEATED WETLAND (BY OWNER)
-  WETLAND BUFFER
-  PROPOSED CONCRETE C&G
-  PROPOSED BITUMINOUS PAVEMENT
-  PROPOSED CONCRETE PAVEMENT
-  NO PARKING ZONE
-  HANDICAP STALL DESIGNATION

KEYNOTES:

- ① BASKETBALL COURT, SEE C104
- ② PLAYGROUND, SEE C104
- ③ BOARDWALK, SEE SPECIAL PROVISIONS
- ④ STREET LIGHT, SEE E101

SITE AND PAVING NOTES

- THE CONTRACTOR, RESPONSIBLE FOR THE WORK'S COMPLETION, MUST COORDINATE CONSTRUCTION STAGING, WHETHER ON OR OFFSITE. IN THE EVENT OF AN OFFSITE STAGING AREA REQUIREMENT, THE CONTRACTOR MUST IDENTIFY, SECURE, AND COVER THE COST OF SAID AREA, WITH NO ADDITIONAL EXPENSE TO THE OWNER. PRIOR TO INITIATING WORK, SUBMIT A STAGING PLAN FOR REVIEW BY THE ENGINEER.
- DIMENSIONS ARE REFERENCED TO THE FACE OF THE CURB UNLESS OTHERWISE SPECIFIED.
- THE PAVEMENT SURFACE IS TO BE CLEANED AS DIRECTED BY THE CITY, COUNTY, MNDOT, OR ENGINEER JUST BEFORE THE APPLICATION OF PAVEMENT MARKINGS. CLEANING SHOULD INVOLVE BRUSHING WITH A NON-METALLIC ROTARY BROOM OR AS RECOMMENDED BY THE MATERIAL MANUFACTURER AND ACCEPTED BY THE CITY, COUNTY, MNDOT, OR ENGINEER (INCIDENTAL).
- IMMEDIATELY FOLLOWING PAVEMENT CLEANING, APPLY PAVEMENT MARKINGS.
- PAVEMENT MARKING EDGE LINES SHOULD ONLY BE BROKEN AT INTERSECTIONS WITH PUBLIC ROADS AND PRIVATE ENTRANCES CONTROLLED BY A YIELD SIGN, STOP SIGN, OR TRAFFIC SIGNAL. THE BREAK POINT IS TO BE AT THE START OF THE INTERSECTION'S RADIUS OR AT MARKED STOP LINES.
- WHEN CONNECTING TO EXISTING ROADWAYS/PAVEMENT SECTIONS AT THE TERMINI OF PROPOSED NEW CONSTRUCTION, CUT VERTICALLY TO THE BOTTOM OF THE IN-PLACE SURFACING OR TO THE BOTTOM OF THE NEW SURFACING DESIGN, WHICHEVER IS DEEPER. THEN AT A 1V:20H TAPER TO THE BOTTOM OF THE RECOMMENDED SUBGRADE EXCAVATION.
- THE CONTRACTOR MUST HAVE A MINIMUM OF TWO INDIVIDUALS WITH CURRENT ACI CONCRETE FLATWORK TECHNICIAN OR FLATWORK FINISHER CERTIFICATION, AND AT LEAST ONE OF THEM MUST BE PRESENT ONSITE FOR ALL CONCRETE POURS.
- TAKE MEASURES TO PROTECT CONCRETE PAVING FROM DAMAGE, EXCLUDING TRAFFIC FROM PAVING FOR A MINIMUM OF 14 DAYS AFTER PLACEMENT. REPAIR OR REPLACE STAINED CONCRETE TO THE SATISFACTION OF THE OWNER AT NO COST TO THE OWNER.
- CONSTRUCTION AND MATERIALS WITHIN THE PUBLIC RIGHT-OF-WAY MUST ADHERE TO CITY, COUNTY, AND MNDOT SPECIFICATIONS AND STANDARDS. MNDOT SPECIFICATIONS AND STANDARDS APPLY IF NOT COVERED BY LOCAL OR COUNTY REGULATIONS. PAVING, PAVEMENT MARKINGS, AND SIGNAGE WITHIN THE SITE MUST MEET SPECIFIC REQUIREMENTS.
 - SITE BITUMINOUS SHALL MEET MNDOT SPEC 2360 AND IN ACCORDANCE WITH DRAWING SPECIFICATIONS. MAXIMUM ALLOWABLE BITUMINOUS LIFT THICKNESS SHALL NOT BE GREATER THAN 3 INCHES. PLACE TACK COAT BETWEEN EACH LIFT AT A RATE SPECIFIED ON DRAWING DETAILS.
 - CONCRETE WALKS TO CONFORM TO MNDOT SPEC 2461
 - CONCRETE CURB AND GUTTER TO CONFORM TO MNDOT SPEC 2461
 - CONCRETE ISOLATION/EXPANSION JOINT MATERIAL: MNDOT SPEC 3702, TYPE D-1 OR TYPE D-2. PROVIDE CAULKING JOINT SEALANT AND BACKER ROD AS RECOMMENDED BY JOINT MANUFACTURER.
 - CONCRETE CURING MATERIAL TO CONFORM TO MNDOT SPEC 3754. CONCRETE SEALER TO BE SILOXA-TIK 8500, ARMOR SX5000, OR APPROVED EQUAL, AND TO BE APPLIED PER MANUFACTURER INSTRUCTIONS.
 - CONCRETE PLACING, FINISHING, CURING, AND PROTECTION TO CONFORM TO MNDOT SPEC 2461, 2521, AND 2531 AND APPLICABLE ACI STANDARDS.
 - AGGREGATE BASE TO CONFORM TO MNDOT SPEC 3138, CLASS 5 AGGREGATE BASE, 100% GRUSHED VIRGIN AGGREGATE OR APPROVED EQUAL.
 - PAVEMENT MARKINGS TO CONFORM TO MNDOT SPEC 2582. ALLOW NEW PAVEMENT TO CURE FOR A MINIMUM OF 14 DAYS MINIMUM PRIOR TO APPLYING PAVEMENT MARKINGS.
- IMPLEMENT FIELD QUALITY CONTROL MEASURES.
 - TEST THE CONCRETE AIR CONTENT (ASTM C231), CONCRETE SLUMP (ASTM C143), AIR AND CONCRETE TEMPERATURE, AND 7- AND 28-DAY COMPRESSIVE STRENGTH (ASTM C31, C39, AND C172), WHERE APPLICABLE, CONDUCT TESTS IN ACCORDANCE WITH THE MNDOT SCHEDULE OF MATERIALS CONTROL.
 - ENSURE THAT ALL BITUMINOUS PAVEMENT DENSITY ADHERES TO MNDOT SPEC 2360.3.D.2 USING THE ORDINARY COMPACTION METHOD. THE CONTRACTOR IS RESPONSIBLE FOR ESTABLISHING A ROLL PATTERN FOR EACH COURSE OF PAVING DAILY.
 - CONDUCT A TEST ROLL OF THE SUBGRADE AND AGGREGATE BASE FOLLOWING MNDOT SPECS 2211 FOR AGGREGATE BASE AND 2111 FOR TESTING ROLLING. THE TEST ROLL MUST BE WITNESSED BY THE ENGINEER OR GEOTECHNICAL ENGINEER.
- TOLERANCES:
 - ENSURE THAT BITUMINOUS PAVEMENT LINE, GRADE, AND THICKNESS CONFORM TO MNDOT SPEC 2360.3.E
 - CONCRETE PAVEMENT TO CONFORM TO MNDOT SPEC 2531.3.D.3
 - CONCRETE CURB AND GUTTER TO CONFORM TO MNDOT SPEC 2531.3
 - PAVEMENT MARKINGS TO CONFORM TO MNDOT SPEC 2582.3.C
- CONTRACTOR SHALL PROVIDED CONCRETE JOINTS TO MATCH EXISTING ADJACENT WORK AND AS FOLLOWS:
 - CONTROL JOINTS - MAINTAIN AN ASPECT RATIO (LENGTH TO WIDTH) OF CONTROL JOINTS AS CLOSE TO 1:1 AS FEASIBLE. AVOIDING AN ASPECT RATIO GREATER THAN 1.5:1. MATCH THE EXISTING PATTERN WHERE APPLICABLE. THE MAXIMUM SPACING FOR CONTROL JOINTS SHOULD BE 24 TIMES THE SLAB THICKNESS, UP TO A MAXIMUM OF 12 FEET ADDITIONALLY. JOINT INTERSECTION ANGLES LESS THAN 90 DEGREES ARE NOT ALLOWED, AND PANEL WIDTHS LESS THAN 6 INCHES AT ANY POINT ARE PROHIBITED. JOINTING MUST ACCOMMODATE IN-PAVEMENT STRUCTURES THROUGH JOINTING AND BOXOUTS. THE CONTRACTOR IS REQUIRED TO SUBMIT A JOINTING PLAN FOR ENGINEER ACCEPTANCE.
 - EXPANSION JOINTS - EXPANSION ISOLATION JOINTS MUST BE PROVIDED AT VARIOUS LOCATIONS, INCLUDING THOSE WHERE ABRUPT CHANGES IN DIRECTION OCCUR, WHERE CHANGES IN WIDTH TAKE PLACE, WHERE ADJOINING EXISTING CONCRETE IS PRESENT, AT LOCATIONS ABUTTING THE BUILDING AND OTHER SITE FEATURES SUCH AS RAMPS, STAIRS, LANDINGS, CONCRETE APRONS, ARCHITECTURAL AND LANDSCAPE FEATURES, ETC., AND AT LOCATIONS WITH CHANGES IN DEPTH, INCLUDING PAVEMENT ADJACENT TO THE CURBS.
- INSTALL A MINIMUM 6-INCH CLASS 5 AGGREGATE BASE UNDER CURB AND GUTTER AS DETAILED.



Y:\18445\18445-01\18445-01\18445-01\CAD FILES\01 SITE.dwg
 Xref Filenames: Y:\18445\18445-TerritorialPark\18445-01\18445-01.dwg
 Apr 02, 2025 - 4:58pm
 stully

Apr 02, 2025 - 4:58pm
 Xref: Filmmar: Y:\18445_TerritorialPark_Titles\18445_18445_3_C_Design\18445_18445_3_C_Design\18445_18445_3_C_GRADES.dwg
 Y:\18445_TerritorialPark_Titles\18445_18445_3_C_Design\18445_18445_3_C_Design\18445_18445_3_C_GRADES.dwg
 stully



GRADING NOTES

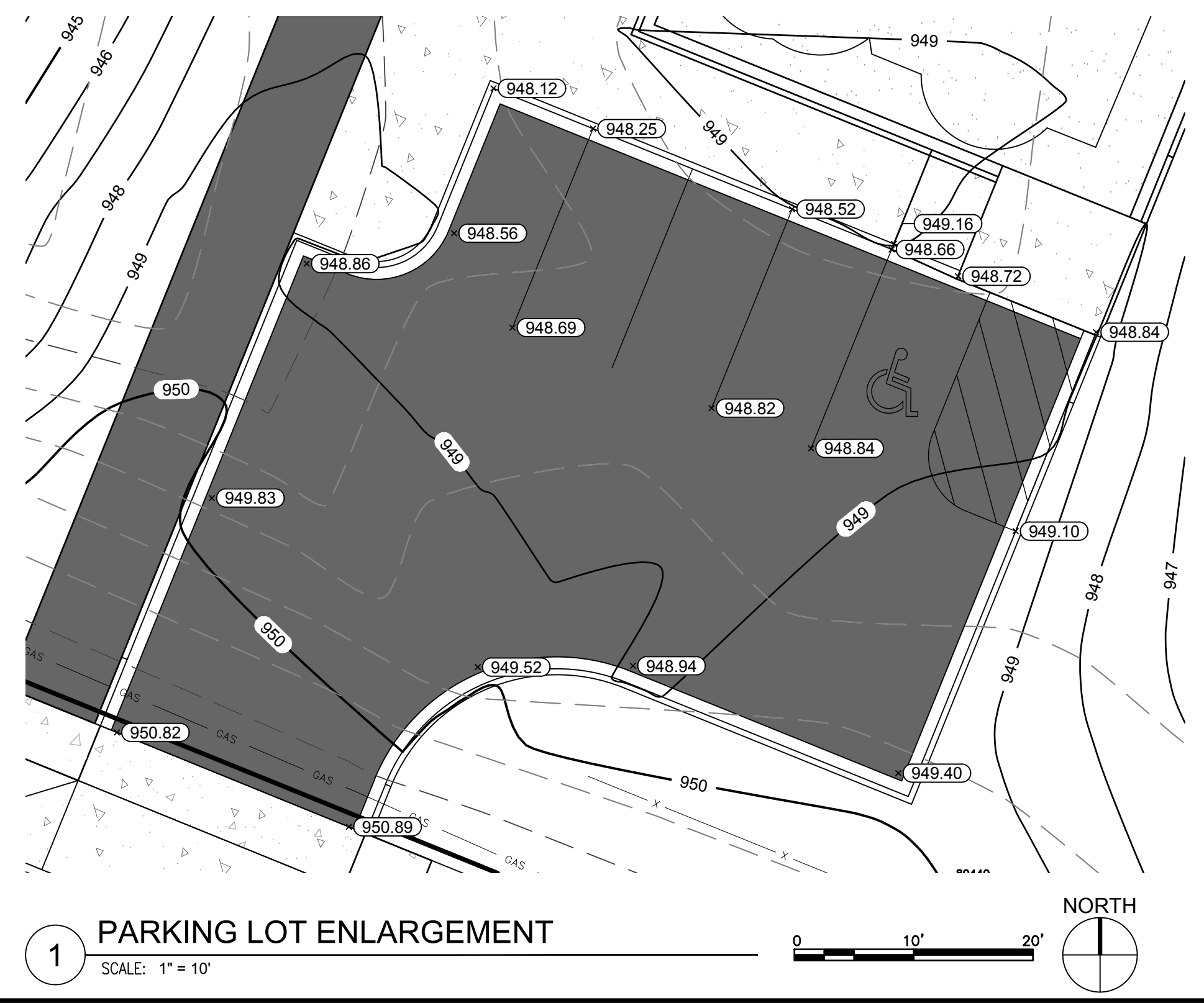
1. THE CONTRACTOR MUST CONSTRUCT/GRADE SIDEWALKS AND ACCESSIBLE ROUTES, INCLUDING CROSSING DRIVEWAYS, IN ACCORDANCE WITH CURRENT ADA STATE AND NATIONAL STANDARDS. IMMEDIATE WRITTEN NOTIFICATION TO THE ENGINEER IS REQUIRED IF ADA CRITERIA CANNOT BE MET AT ANY LOCATION.
2. IMPORTED SUITABLE FILL MATERIAL NEEDED MUST BE APPROVED BY THE GEOTECHNICAL ENGINEER BEFORE BRINGING IT ON THE SITE.
3. THE CONTRACTOR MUST COORDINATE REQUIRED SOIL TESTS AND INSPECTIONS WITH THE GEOTECHNICAL ENGINEER.
4. THE CONTRACTOR IS RESPONSIBLE FOR EXCAVATING AND DISPOSING OF UNSUITABLE OR CONTAMINATED SOILS DISCOVERED ONSITE IN ACCORDANCE WITH APPLICABLE REGULATIONS AND AS DIRECTED BY THE GEOTECHNICAL ENGINEER.
5. EXISTING TOPSOIL ON-SITE VARIES IN DEPTH. THE CONTRACTOR IS RESPONSIBLE FOR REMOVING SURFACE VEGETATION, TOPSOIL, AND OTHER UNSUITABLE MATERIAL FROM IMPERVIOUS AREAS AND OTHER DESIGNATED AREAS BEFORE PLACING SUITABLE FILL MATERIAL, AS DIRECTED BY THE GEOTECHNICAL ENGINEER.
6. EXCAVATE, COMPACT EMBANKMENT/SUITABLE FILL, AND BACKFILL IN ACCORDANCE WITH MNDOT SPEC 2106 SPECIFIED DENSITY METHOD. THE CONTRACTOR MUST MEET MOISTURE CONTENT/CONTROL REQUIREMENTS IN ACCORDANCE WITH MNDOT 2106 AND SITE TESTING REQUIREMENTS.
7. ONSITE EMBANKMENT MATERIAL FREE OF ORGANIC SOIL AND DEBRIS MAY BE CONSIDERED FOR REUSE AS SUITABLE FILL MATERIAL IN PERVIOUS AREAS BUT MUST BE APPROVED BY THE GEOTECHNICAL ENGINEER.
8. THE CONTRACTOR SHOULD PROMPTLY BACKFILL SUBGRADE AND TRENCH EXCAVATIONS AFTER EXCAVATION.
9. THE CONTRACTOR IS RESPONSIBLE FOR QUANTIFYING SOIL IMPORT OR EXPORT AND CONDUCTING THEIR OWN QUANTITY TAKEOFFS FROM THE DRAWINGS. ADDITIONAL ON-SITE EXCAVATION OR OFF-SITE IMPORT MAY BE NECESSARY TO ACHIEVE FINAL GRADES, AND THE CONTRACTOR MUST COORDINATE THESE ACTIONS WITH THE OWNER AND ENGINEER. THE SUITABILITY OF OFFSITE IMPORT MATERIAL MUST BE VERIFIED BY THE GEOTECHNICAL ENGINEER. ANY EXCESS MATERIAL, UNLESS NOTED OTHERWISE, BELONGS TO THE CONTRACTOR AND SHOULD BE MOVED AND DISPOSED OF OFFSITE IN ACCORDANCE WITH APPLICABLE LAWS.
10. GRADING DISCREPANCIES IN EXISTING OR PROPOSED GRADES MUST BE REPORTED IN WRITING TO THE ENGINEER BEFORE PLACING PAVEMENT. THE CONTRACTOR SHOULD OBSERVE PAVEMENT AREAS FOR EVIDENCE OF PONDING BEFORE PLACEMENT TO ENSURE ADEQUATE DRAINAGE.
11. EXISTING SPOT ELEVATIONS AT MATCH POINTS ARE BASED ON SITE SURVEY DATA. THE CONTRACTOR IS RESPONSIBLE FOR VERIFYING CONNECTION POINTS BEFORE INSTALLATION OF IMPROVEMENTS AND MUST NOTIFY THE ENGINEER IN WRITING OF ANY FIELD DISCREPANCIES. THE CONTRACTOR IS RESPONSIBLE FOR REWORK OF ANY DISCREPANCIES THAT ARE NOT COMMUNICATED TO THE ENGINEER IN WRITING AT NO ADDITIONAL COST TO THE OWNER.
12. THE PROPOSED CONTOURS PERTAIN TO THE FINISHED SURFACE GRADE, UNLESS OTHERWISE INDICATED.
13. THE CONTRACTOR IS RESPONSIBLE FOR MEETING GRADING/COMPACTION REQUIREMENTS OUTLINED IN THE GEOTECHNICAL REPORT AND SPECIFICATIONS FOR THE PROJECT.
14. IMPORTED SUITABLE FILL MATERIAL MUST BE APPROVED BY THE GEOTECHNICAL ENGINEER BEFORE BRINGING IT ON THE SITE.
15. THE CONTRACTOR IS RESPONSIBLE FOR PROVIDING DEWATERING MEASURES AS REQUIRED OR AS DIRECTED BY THE GEOTECHNICAL ENGINEER AT NO ADDITIONAL COST TO THE OWNER.
16. COMPACTION TESTING SHALL FOLLOW THE FREQUENCY OUTLINED IN THE GEOTECHNICAL REPORT OR MNDOT SCHEDULE OF MATERIALS CONTROL. WHERE NO FREQUENCY IS PROVIDED, CONSULT THE ENGINEER FOR MINIMUM REQUIREMENTS.
17. GRADING ELEVATIONS SHALL CONFORM TO MNDOT SPEC 2106.3.1.

LEGEND

- — — — — PROPERTY LIMITS
- - - - - CONSTRUCTION LIMITS
- - - - - EXISTING MINOR CONTOUR
- - - - - EXISTING MAJOR CONTOUR
- - - - - PROPOSED MINOR CONTOUR
- - - - - PROPOSED MAJOR CONTOUR
- x 954.2 EXISTING SPOT ELEVATION
- DRAINAGE ARROW
- ==== PROPOSED CONCRETE C&G

STRUCTURE SCHEDULE

STRUCTURE NUMBER	STRUCTURE SIZE	CASTING (NEENAH OR APPROVED EQUAL)
CB-1	3' X 2' - BOX	R-3067-V



TERRITORIAL PARK
 ASHBURY DRIVE
 ROGERS, MN 55374

CITY OF ROGERS

95% CONSTRUCTION DOCUMENTS
 NOT FOR CONSTRUCTION

REVISION LOG

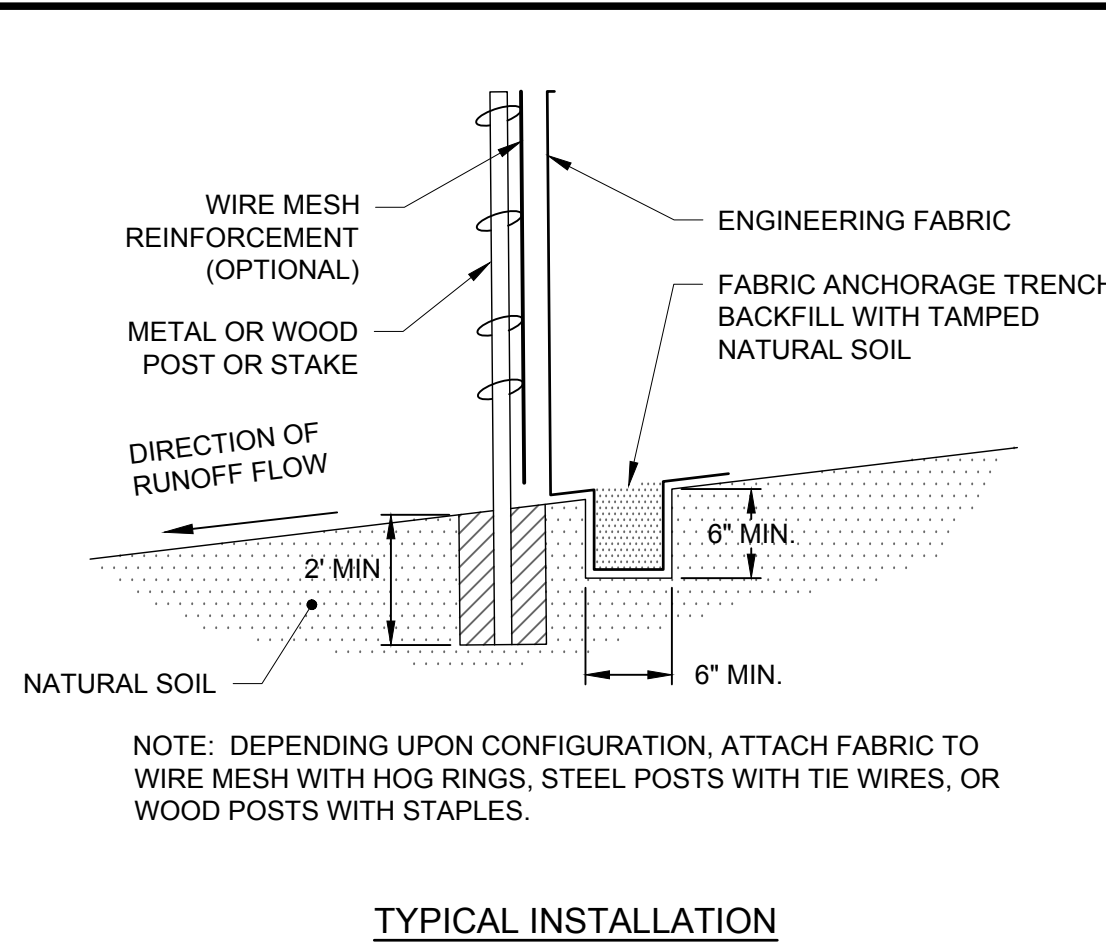
NO.	DATE	DESCRIPTION OF REVISIONS

APRIL 2, 2025
 DESIGNED: ST
 DRAWN: ST
 CHECKED BY: JL

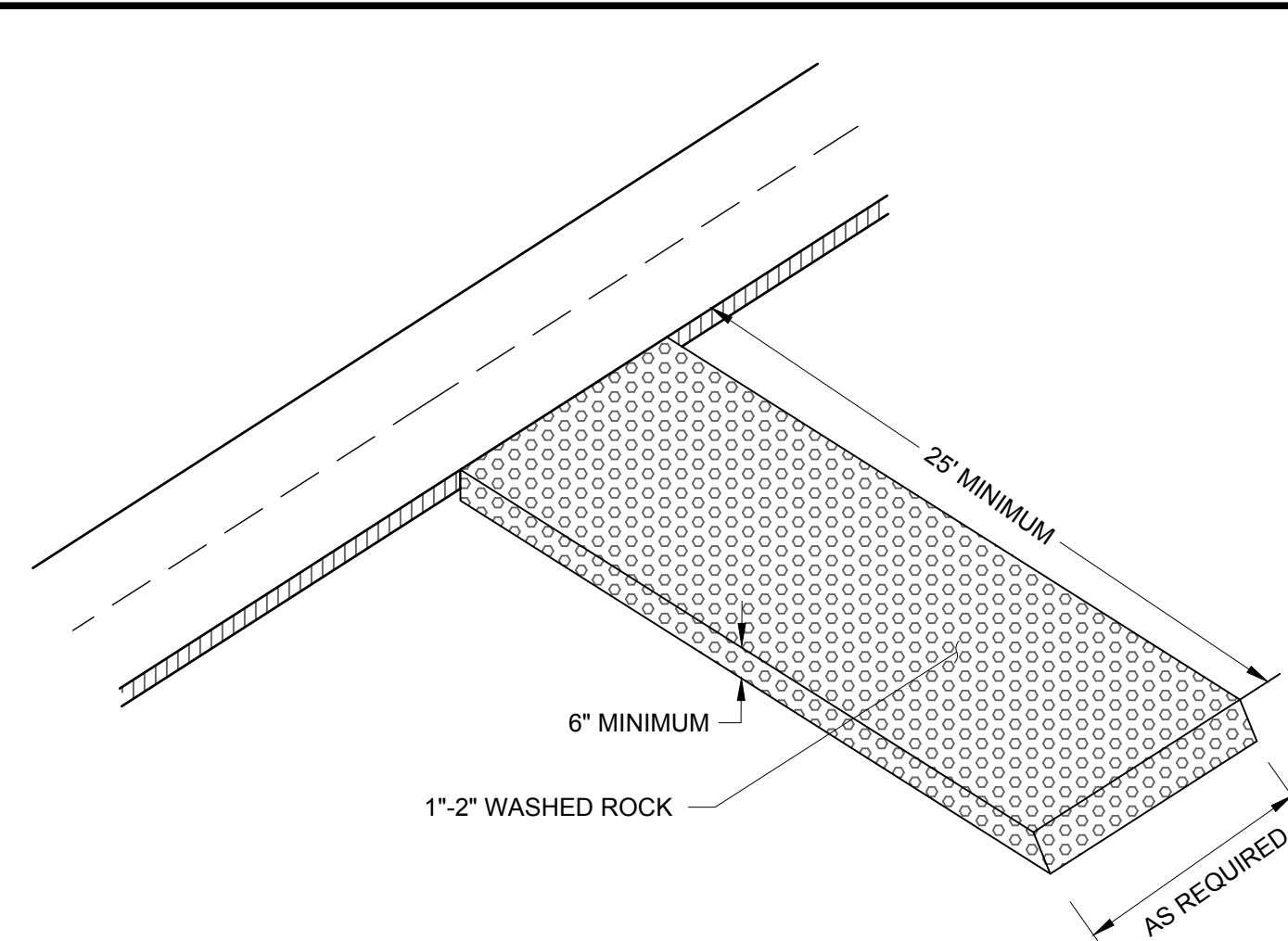
DRAWING TITLE
 GRADING, EROSION CONTROL, AND DRAINAGE PLAN

DRAWING NO.
C102

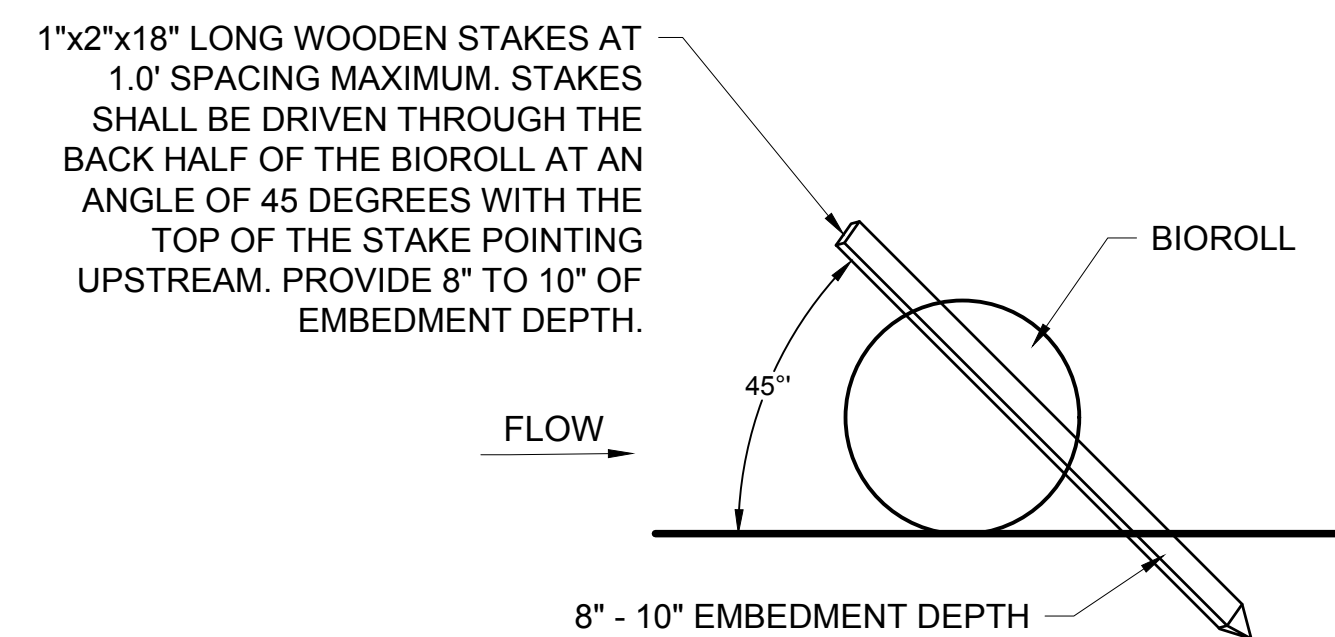
PLOTTED: ---
 COMM. NO. 18445



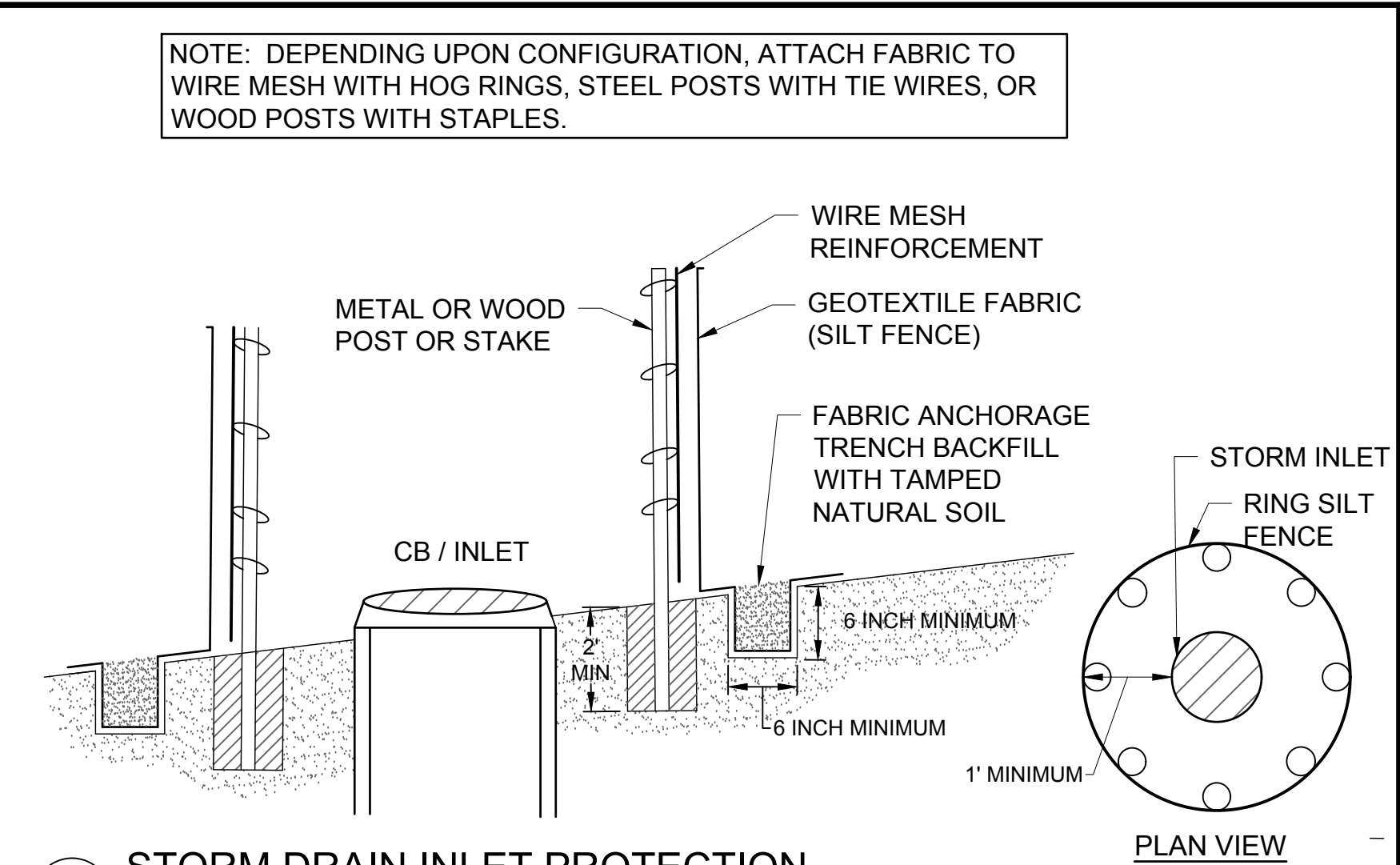
1 SILT FENCE
SCALE: NTS



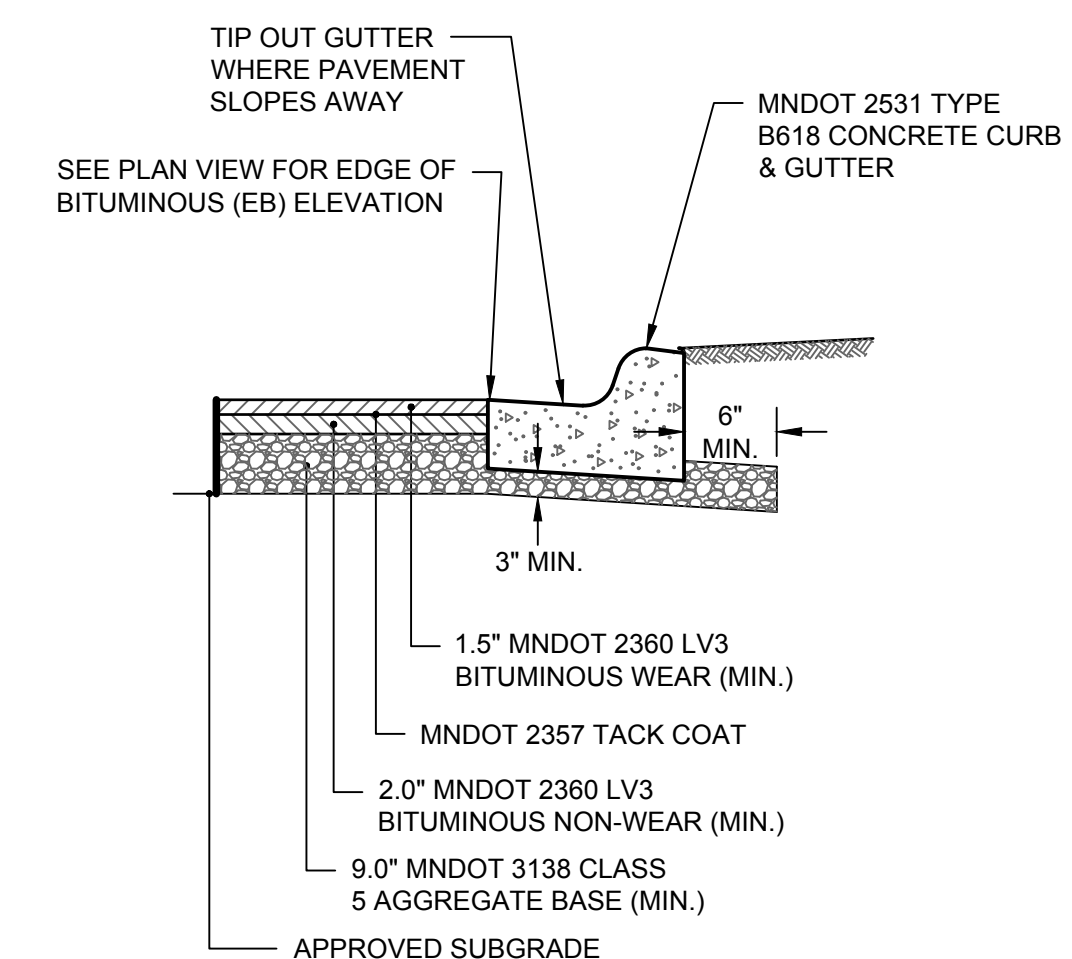
2 ROCK CONSTRUCTION ENTRANCE
SCALE: NTS



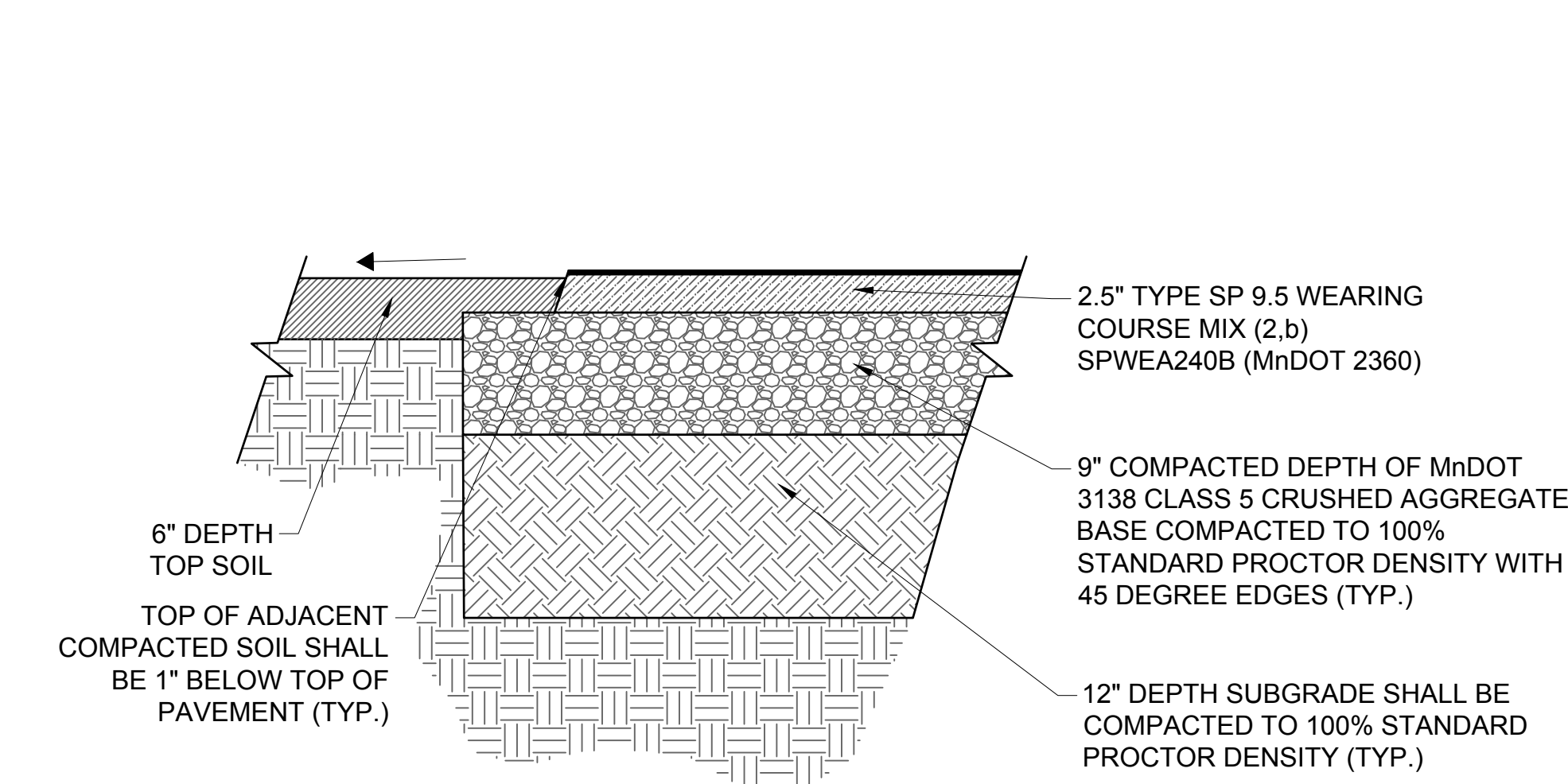
3 BIOROLL INSTALLATION
SCALE: NTS



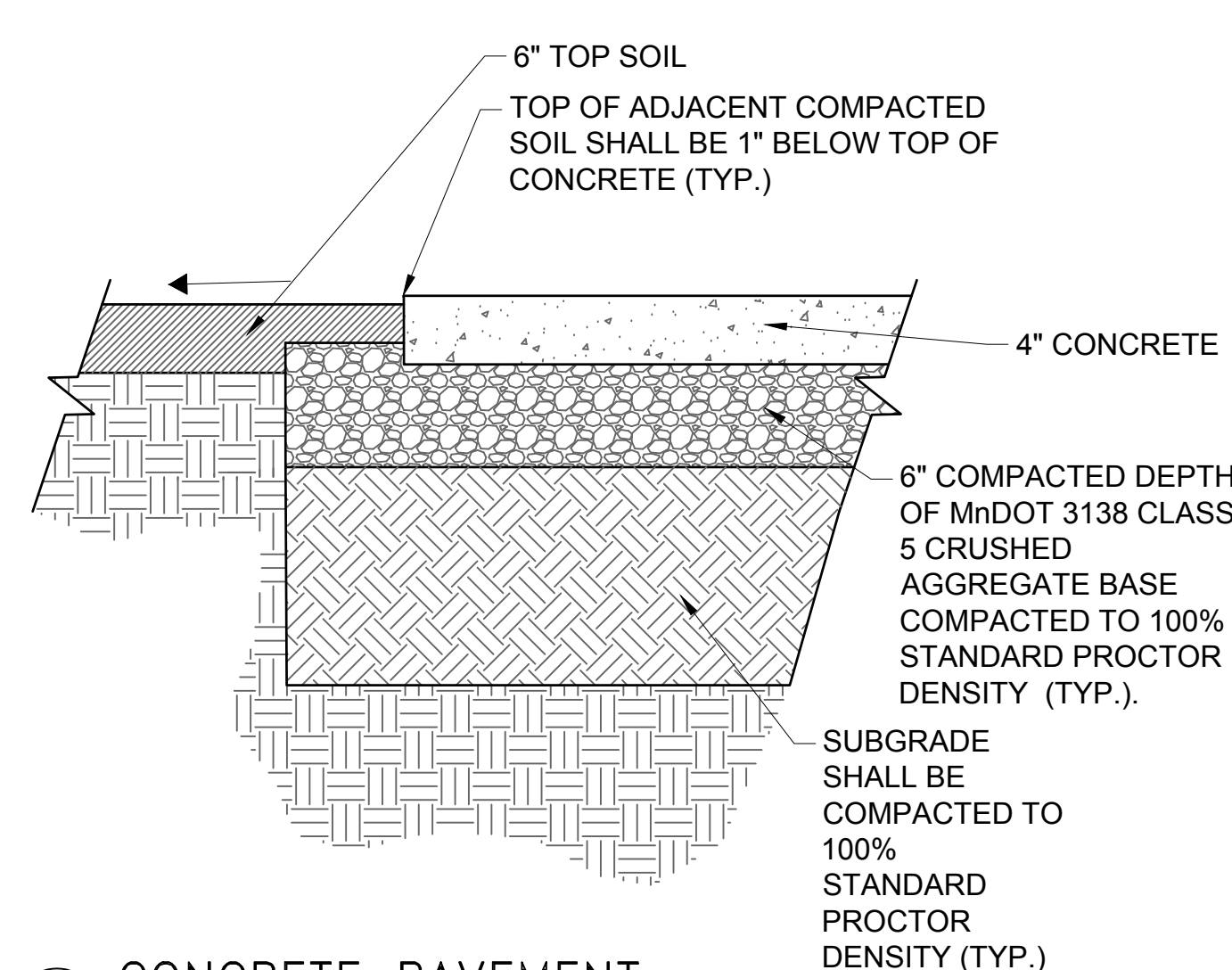
4 STORM DRAIN INLET PROTECTION
SCALE: NTS



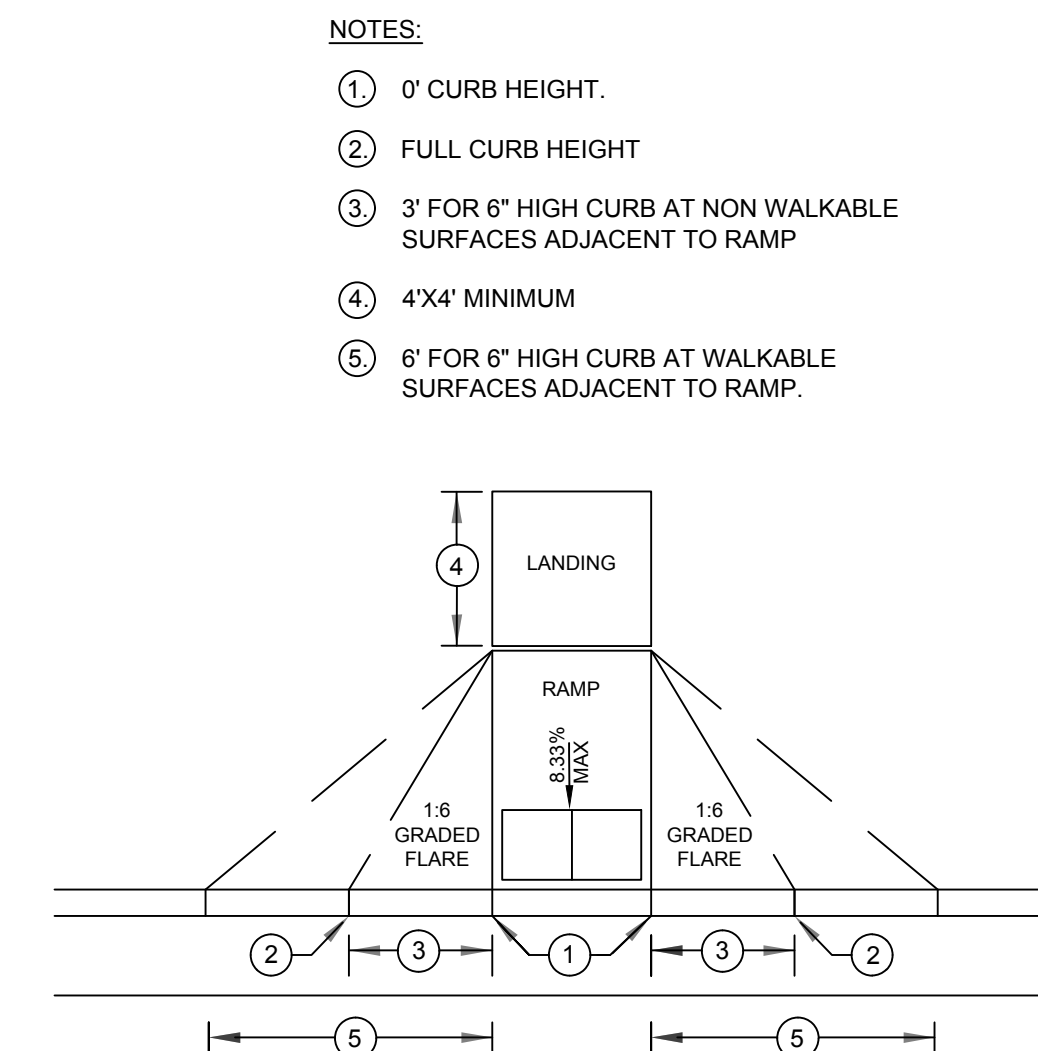
5 BITUMINOUS PAVEMENT
SCALE: NTS



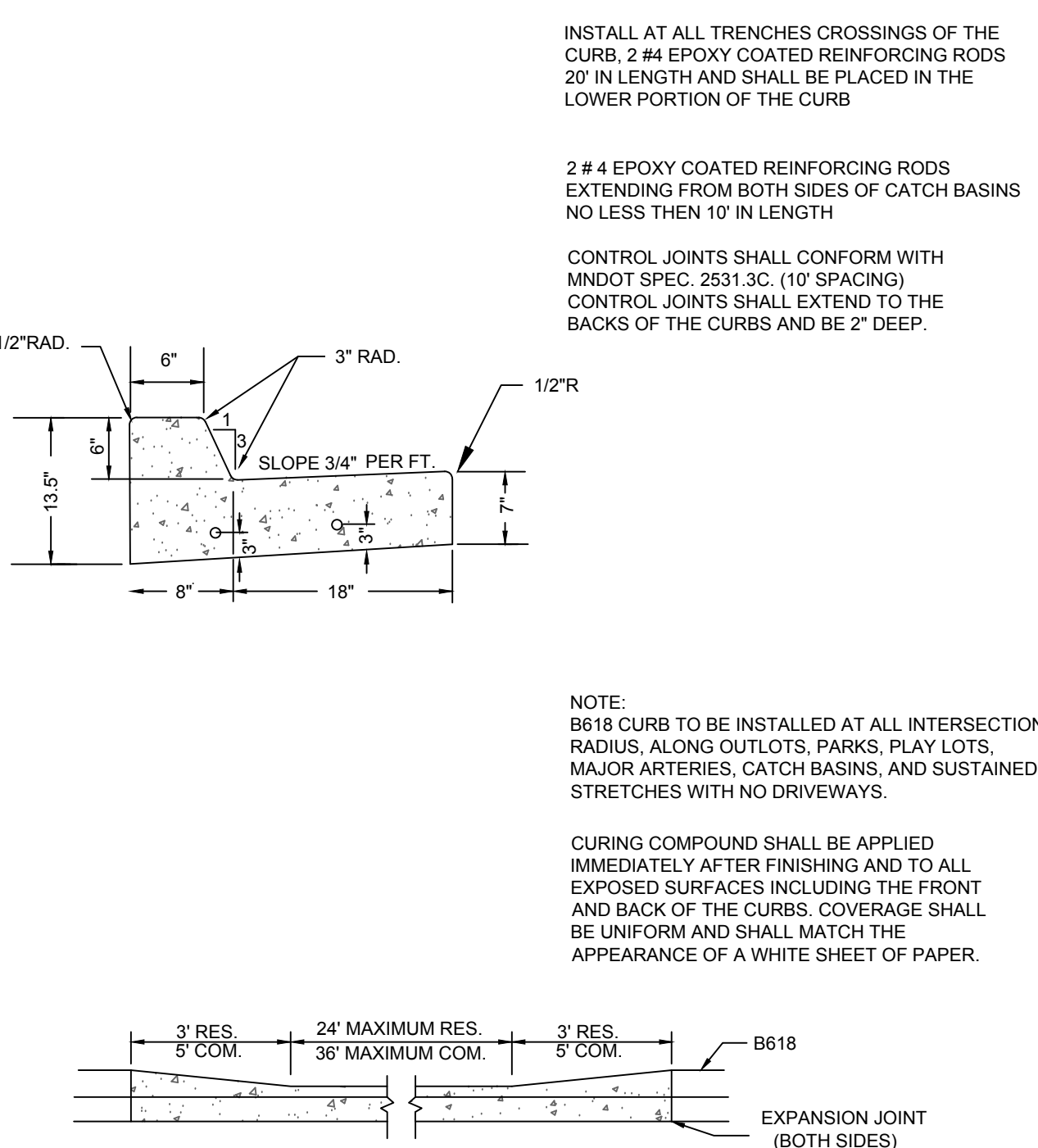
6 BITUMINOUS TRAIL & BASKETBALL COURT PAVEMENT
SCALE: NTS



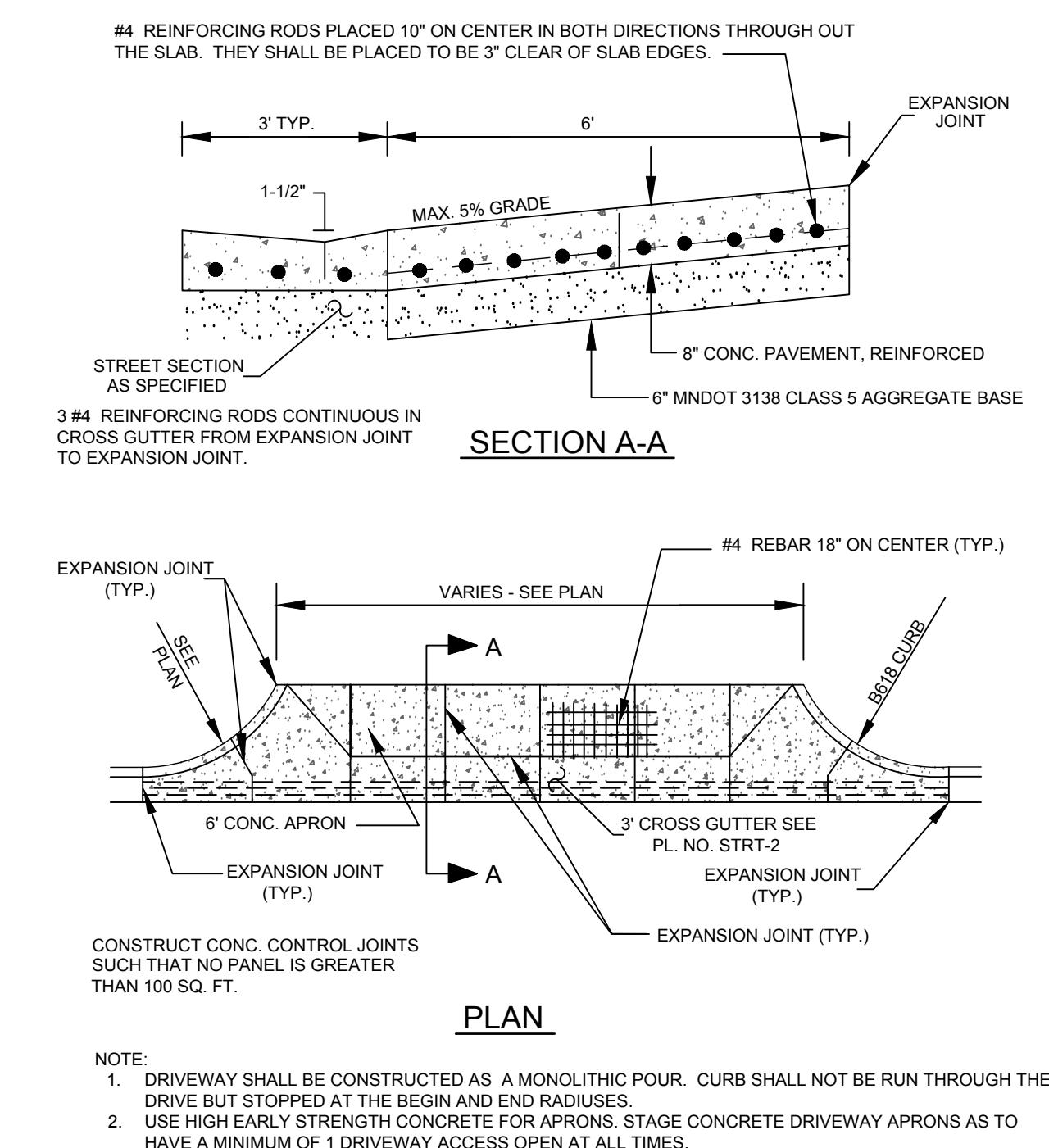
7 CONCRETE PAVEMENT
SCALE: NTS



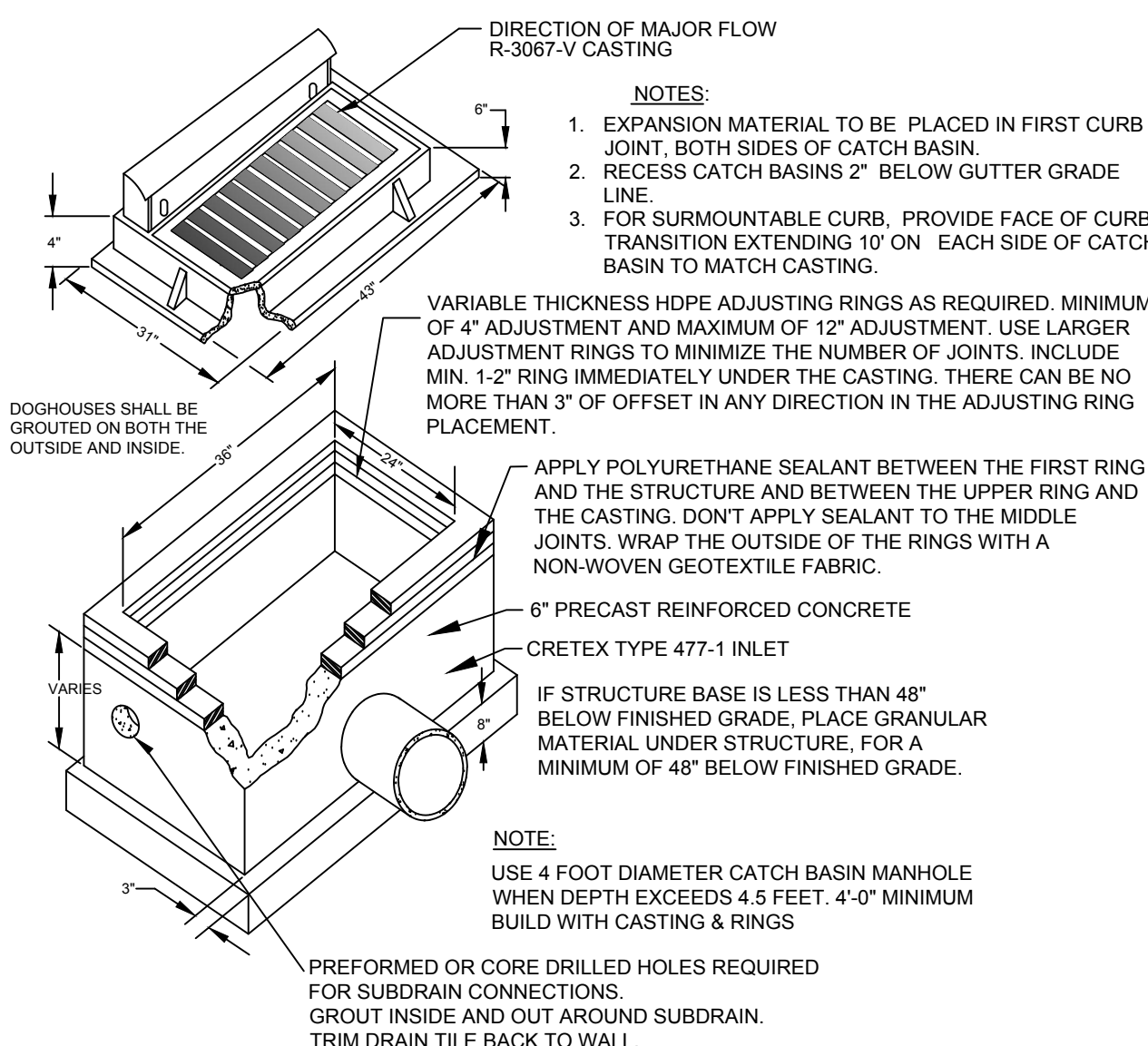
8 PEDESTRIAN RAMP
SCALE: NTS



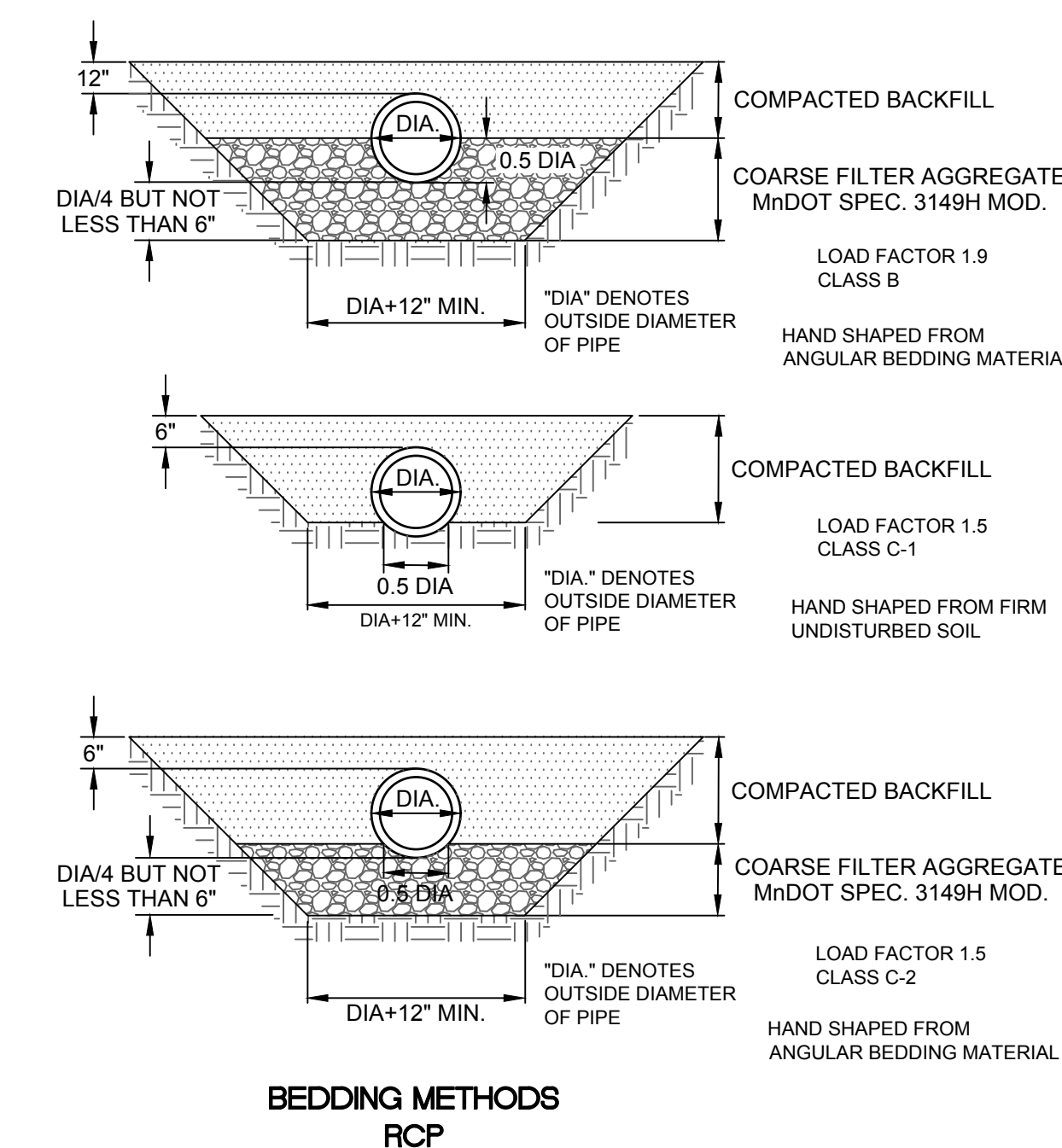
9 CONCRETE CURB AND GUTTER
SCALE: NTS



10 COMMERCIAL CONCRETE DRIVEWAY
SCALE: NTS



11 2' x 3' BOX CATCHBASIN
SCALE: NTS



12 RCP PIPE BEDDING
SCALE: NTS

REVISION LOG		
NO.	DATE	DESCRIPTION OF REVISIONS

APRIL 2, 2025		
DESIGNED: ST	DRAWN: ST	CHECKED BY: JL

DRAWING TITLE
DETAILS

DRAWING NO.	
C107	
PLOTTED: ---	COMM. NO. 18445

Y:\184001\18445 CITY OF ROGERS TERRITORIAL PARK ROGERS MN_07\Civil_01 CAD Files_01 SHEETS\18445_C_DETALS\2.dwg
Apr 02, 2025 - 4:59pm
Xref File Name: Y:\18445_TerritorialPark_Titles\Back

ANDERSON

Territorial Park
 City of Rogers
 Engineers Opinion of Costs
 Schematic Design
 4/8/2025

Line Item	Item Description	Unit of Measure	Quantity	Unit Price	Total
Phase 1					
1	Mobilization	LS	1	\$100,000.00	\$100,000.00
2	Removals	LS	1	\$75,000.00	\$75,000.00
3	Erosion Control	LS	1	\$40,000.00	\$40,000.00
4	Bituminous Parking Lot	TON	70	\$250.00	\$17,500.00
5	Class 5 Aggregate Base	TON	160	\$50.00	\$8,000.00
6	Bituminous Sidewalk and Trails	TON	190	\$250.00	\$47,500.00
7	Class 5 Aggregate Base	TON	450	\$50.00	\$22,500.00
8	Remove, Stockpil and Respread Topsoil	Cy Yd	1000	\$18.00	\$18,000.00
9	Haul in Fill	Cu Yd	2000	\$24.00	\$48,000.00
10	Earthwork	LS	1	\$75,000.00	\$75,000.00
11	Concrete Curb & Gutter Parking	Ln Ft	225	\$50.00	\$11,250.00
12	Concrete Curb & Gutter Tot Lots	Ln Ft	500	\$50.00	\$25,000.00
13	Concrete Drive Apron and Parking Lot Sidewalk	Sq Yd	245	\$70.00	\$17,150.00
14	Class 4 Aggregate	TON	80	\$50.00	\$4,000.00
15	Storm Sewer	LF	40	\$100.00	\$4,000.00
16	Catch Basin	EA	1	\$6,000.00	\$6,000.00
17	Light Pole	LS	1	\$15,000.00	\$15,000.00
18	Sodding	Sq Yd	4880	\$12.00	\$58,560.00
19	Seeding	Sq Yd	8900	\$1.50	\$13,350.00
20	Trees	EA	22	\$1,200.00	\$26,400.00
21	Small Tree	EA	31	\$500.00	\$15,500.00
22	Shrubs	EA	31	\$150.00	\$4,650.00
23	Shelter / Pavilion	EA	1	\$65,000.00	\$65,000.00
24	Themed Play Areas: 2-5 yr. olds & 5-12 yr olds	EA	1	\$425,000.00	\$425,000.00
25	Picnic Tables	EA	1	\$3,500.00	\$3,500.00
26	Benches	EA	3	\$2,500.00	\$7,500.00
27	Basketball Court	LS	1	\$35,000.00	\$35,000.00
28	Northwest Boardwalk	LS	1	\$40,000.00	\$40,000.00
29	East Boardwalk	LS	1	\$55,000.00	\$55,000.00
				Base Bid Subtotal:	\$1,283,360.00
Add Alternate 1					
30	Removals	LS	1	\$45,000.00	\$45,000.00
31	Erosion Control	LS	1	\$15,000.00	\$15,000.00
32	Bituminous Trails	TON	90	\$250.00	\$22,500.00
33	Remove, Stockpil and Respread Topsoil	Cy Yd	100	\$18.00	\$1,800.00
34	Haul in Fill	Cy Yd	500	\$24.00	\$12,000.00
35	Class 5 Aggregate Base	TON	225	\$50.00	\$11,250.00
36	Earthwork	LS	1	\$45,000.00	\$45,000.00
37	Bench w/ Gravel Pad	EA	2	\$5,000.00	\$10,000.00
38	North Boardwalk	LS	1	\$75,000.00	\$75,000.00
				Add Alternate 1 Subtotal:	\$237,550.00
				Subtotal	\$1,520,910.00
				Contingency (5%)	\$76,045.50
				Total Construction Cost	\$1,596,955.50

Quotation - Preferred Option



Project: Territorial Park
Contact: Mike Bauer
22350 S. Diamond Lake Rd.
Ship To: Rogers, MN 55374

Sourcewell Info:
Playworld Systems: #010521-LTS-8

Phone: 763-428-0974
Fax:

Email: mbauer@rogersmn.gov
Shipping: mis@midwestplayscapes.com
g m

Customer Name / Contract #:
City of Rogers, Sourcewell #2417
bri.schmidt@sourcewell-mn.gov

Bill To:
Date: 4/9/25

Qty	Design/Item #	Description	Unit Price	Total
		<u>Border/Surfacing</u>		
2050	SF	PIP Safety Surfacing	\$ 21.00	\$ 43,050.00
2050	SF	PIP Base	\$ 5.00	\$ 10,250.00
198	CY	EWf Safety Surface	\$ 25.00	\$ 4,950.00
125	SF	Turf Safety Surface	\$ 19.00	\$ 2,375.00
4400	SF	Drainage Agg and DrainTile	\$ 1.00	\$ 4,400.00
		<u>Play Equipment 2-5</u>		
1	80008	Patty Cake	\$ 31,650.00	\$ 31,650.00
1	ZZXX0409	Pup Tent Climber	\$ 5,907.00	\$ 5,907.00
1	1000318	Slide Mound	\$ 22,700.00	\$ 22,700.00
1	ZZXX0483	Cozy Cocoon	\$ 4,291.00	\$ 4,291.00
1	ZZXX0822	Early Childhood Swing	\$ 2,223.00	\$ 2,223.00
1	ZZXX0843	Age Risk Management Sign	\$ 400.00	\$ 400.00
		<u>Play Equipment 5-12</u>		
1	80007	Deep Woods Adventureville	\$166,850.00	\$166,850.00
1	ZZXX0931+ZZXX0933	Arch Swing 2 Bay	\$ 5,299.00	\$ 5,299.00
1	ZZXX0892	Accessible Swing Seat	\$ 1,591.00	\$ 1,591.00
3	ZZXX0260	Belt swing	\$ 176.00	\$ 528.00
1	ZZXX0192	Unity Teeter Tunnel	\$ 13,455.00	\$ 13,455.00
1	ZZXX1158	Accessible Whirl	\$ 16,400.00	\$ 16,400.00
1	ZZXX0843	Age Risk Management Sign	\$ 400.00	\$ 400.00
		<u>Site Furnishings</u>		
3	WP1-1001	Sitescapes - Westport Steel Bar Ends	\$ 1,200.00	\$ 3,600.00
2	NY6-1000-RP	Sitescape - New York Picnic Table	\$ 2,400.00	\$ 4,800.00
1	ZZPSP020	Single Post 16' x 16' Pyramid Shade	\$ 7,127.00	\$ 7,127.00
		<u>Installation</u>		\$ 67,496.94
1		<u>Sourcewell Discount (10%)</u>		\$ (28,722.10)
		Subtotal		\$391,020.84
		Freight		\$ 12,637.72
	Tax Exempt # _____	* Please provide certificate	Sales Tax	
			Local Sales Tax	
		Total		\$403,658.56

NOTE: Any Insurance requirements above \$1,000,000 General Liability will be subject to a surcharge

UNLESS OTHERWISE NOTED, prices shown are material only. They **DO NOT** include: assembly, installation, border, safety surfacing, drain tile, geotextile fabric, removal of existing equipment, site preparation, excavation or site restoration, unloading of equipment, disposal of packaging material, storage of equipment, additional insurance and bonding would be extra, unless otherwise stated above. If playground equipment or materials are stored off site, customer is responsible for transporting equipment to job site.

NOTE:

Prices firm for 30 days, subject to review thereafter. Our terms are net 30. A finance charge of 1.5% will be imposed on the outstanding balance unpaid for more than 30 days after the shipment of materials. Equipment shall be invoiced separately from other services and shall be payable in advance of those services and project completion. Retainage not accepted. Once customer has signed quotation, your order cannot be changed or canceled. Please allow 3to4 weeks for delivery after receipt of order. Standard manufacturing design, specification, and construction apply unless noted otherwise. Customer is responsible for the identification of all underground utilities. Area must be accessible to Bobcat and other equipment necessary for installation or additional fees will be charged. Freight quote is based on customer unloading equipment and checking in all equipment for any missing parts. If product is refused by customer upon delivery for any reason (unless damaged), without prior authorization from Midwest Playscapes, Inc., the customer agrees to pay 20% restocking fee plus freight charges. Price does not include prevailing wages, unless otherwise noted. If we can be of Other Assistance, please feel free to contact us.

Name: _____
Signed: _____
Date: _____

















STAFF REPORT
ROGERS PARKS AND RECREATION ADVISORY COMMISSION

Meeting Date: April 10, 2025

Agenda Item: 6.2

Subject: 2025 Work Plan

Prepared By: Mike Bauer, Parks & Recreation Director

Recommended Council Action

Overview / Background / Analysis

The Parks and Recreation Advisory Commission recommends a work plan to guide yearly staff activities. This list is for the more significant initiatives, which usually involve many hours of planning or construction.

[Local Option Sales Tax Page](#)

Indoor Turf Facility (Design \$13.2M) [Turf Facility Update Page](#)

Future Recreation Facility Site Improvements (Complete \$2M)

South Community Park Athletic Improvements (Under Construction, Estimated \$4M)

Splash Pad (Complete \$1.5M)

I-94 Ped Crossing (On Hold)

144 Tunnel (On Hold)

Trails:

SDLR-137th (Pending Design)

Hassan Elementary to Marie Ave (Complete)

Henrys Woods to SDLR

Cambria to 147th

Brocton Meadow to 144

Edgewater to Willindale

City Improvements to School Pool (Pending ISD 728 Actions may be past the date of bonding availability)

Staff Recommendation

Financial Impact:

Source Fund:

Budgeted?

Supporting Documentation

A. 2025 Work Plan

B. Photos for work Plan

2025 Work Plan

Category	Project	Status	Next Steps
Trails	Territorial View Estates	Planning	County is reviewing intersection alignment
Trails	RMS/RHS Tunnel (LOST)	Hold	Engineering reached out to see if ISD 728 could participate in a Safe Routes to School grant and ISD 728 does not have dollars for this in the current 10 year plan for the mandatory local match.
Trails	I-94 Pedestrians Crossing(LOST)	Hold	
Trails	Brockton Lane to Wellstead Drive (FMP)	Design	Will be part of the SDLR reconstruct 2025
Trails	SDLR -137th (LOST)Rachel Development	Partial Completion.	Next steps: RFP for design and right of way acquisition.
Facility	Event Center Donor Recognition Overall	Design	Will be using the scheduling software platform.
Park/Facility	Hennepin County Youth Sports Grant Spring Playground	TBD	
Park/Facility	Hennepin County Youth Sports Grant Fall Capital	TBD	Recommend we not apply until SCP complete
Park	Cambria Hills Park and Trail Development		
Facility	Senior Center Programming Locations		Duffy is set to close in May, with construction to start thereafter.
Parks	RHS Softball Field Request for Hassan Hills	Hold Pending Funding	Met with user groups. They are going to gauge the interest in moving forward with a scaled-back plan.
Parks	Determine Playground Replacement Priority		
Parks	Final Design of Territorial Park		Public Meeting tonight
Parks	NCP Build out Design		Working on RFP with Anderson Engineering.
Parks	Select Parks for Hard Court and Pavilions		
Parks	Crow River Heights		Looking at this as a City project for the trail section
Parks	Cowley Lake House Removal		
Parks	Tree inventory/management plan www.mntreesource.com		
Parks	Fox Creek West Playground Replacement		Ordered-Spring 2025 installation
Parks	Brookside Meadows Playground Replacement		Ordered-Spring 2025 installation
Park/Facility	SCP FFE Purchase		
Park/Facility	SCP Ribbon Cutting		May-25
Park/Facility	SCP Concessions Operations		
Park/Facility	Rink Attendant Position???		
Facility	Indoor Turf Facility	Allocation	Applications are due Friday, April 11.
Facility	Indoor Turf Facility	Policies/Procedures	
Facility	Indoor Turf Facility	FFE Purchases	
Facility	Indoor Turf Facility	Plyground selection	Ordered-pending down payment
Facility	Indoor Turf Facility	Staffing	Have two postions budgeted for 1/4 year-Consider hiring one ealry and one later.
Facility	Indoor Turf Facility	Ribbon Cutting/Grand Opening	Will set this date closer to the opening, it will coinside with some naming rights configuration.
Recreation	Programming Lists and Policies		
Trails	Plan for trails at SCP connecting to Astermills		Working on Updated JPA with ISD 728
	Plan for 2026 information gathering/strategies for master plan update		
	Complete		
	Change from last report		

Warming House



Concessions Stand



Exterior of Maintenance Building



Exterior of Warming House Concessions



Interior of Maintenance Building









STAFF REPORT
ROGERS PARKS AND RECREATION ADVISORY COMMISSION

Meeting Date: April 10, 2025

Agenda Item: 8.1

Subject:

PRAC Correspondence and Staff Report

Prepared By: Mike Bauer, Parks & Recreation Director

Recommended Council Action

Overview / Background / Analysis

Staff Recommendation

Financial Impact:

Source Fund:

Budgeted?

Supporting Documentation

- A. Coorispondence
- B. Park and Rec Staff Update

City of
ROGERS
Parks & Recreation

The Three Rivers Park District Board of Commissioners cordially invites you to the
State of the Parks Address and Expo

Wednesday, April 23, 2025
9:00 a.m., with the presentation beginning at 9:30
a.m.
Hyland Hills Chalet
8800 Chalet Road, Bloomington

Please RSVP by Monday, April 21 to:
Jason McGrew-King
763-559-6779
Jason.McGrew-King@ThreeRiversParks.org



Hi Mike,

Thank you for letting us know about the meeting tonight. I'm glad we were there.

I have a follow-up question. I thought I heard it said that the city gave the builders the option to either do a berm or a fence on the park border. Is that correct? Since DR did the berm for the houses on that side do you know if Lennar is doing a fence for us on this side?

Thanks Again,

Ryan

Hi Ryan and Ashley,

Thank you for coming to the meeting. It was very productive, and the Parks and Recreation Advisory Commission appreciates your feedback.

Ryan, When Lennar purchased the property, the property line behind your home was the western edge of their development. They did not own the land to the east or participate in the parkland acquisition. I do not know if they have ever considered any screening or berm; I was not able to find anything in the developer's agreement that would have required them to build either improvement.

Ashly, it looks like across the street from your home is a pipe that would either be an inlet or outlet for the wetland. If it was a city crew, they were most likely maintaining the structure:



Thank you,

Hi Mike,

As I spend time in similar facilities in other cities - I notice they all have advertising & sponsor banners hanging. Would we be able to partner with the facility to fundraise and fill any space in the building? Will organizations be able to hang anything inside?

Thanks,

Jen

Jen Carriker

President

Rogers Otsego Youth Lacrosse Association

Hi Jen,

We will have our naming rights sponsors displayed in the facility. We have not considered any other advertisements in there at this time. I think it would be cool to add some recognition for the user groups. I hope to have the operations supervisor on staff by the end of July, and I will have them work on that part of it.

Thank you,

Name: Joan Haus

Subject: Fitness classes

Message: Hello—will you be offering exercise classes at this facility?

Good Morning Joan,

Sorry for the delay in getting back to you with about your question. I'm assuming you were asking about a fitness class at the new Indoor Turf facility?

The facility will contain an indoor turf field (soccer, football, lacrosse, etc), playground, batting cages, as well as some office space and an after school teen room. There is no designated fitness center/equipment in the facility; and at this time, no plans for any fitness classes. But as we grow and create programming for this space, there may be opportunities to offer different activities like this down the road.

Let us know if you have any additional questions,



Hello Step to it coordinators,

The Hennepin County-sponsored Step to it Challenge has been a long standing annual communitywide challenge that was created to encourage people to increase their physical activity in the month of May, no matter their age or ability. Last year alone, over 4,600 registered participants logged over 755 million steps.

However, we regret to inform you that the decision was made late last week by leadership to sunset the program. The Step to it Challenge is no longer available. We want to express our deep appreciation for the years your city has participated in this partnership. We also want to apologize for this very late notice.

We hope that by participating in the challenge your residents have built sustainable physical activity habits and deepened connections with their family, friends, neighbors and the community. We hope everyone continues to see the month of May as a launch into spring with more physical activity after a long winter.

Please let us know if you have any questions. Thank you.

Sincerely,
Dianne and Anne

Anne Nelson
Senior Planning Analyst
Hennepin County Public Health Promotion
525 Portland Ave (MC963)
Minneapolis, MN 55415

Anne.Nelson@hennepin.us

Subject: Sensory play ideas for disabled children!

Hi Mike,

It was very nice chatting with you today. As I was mentioning, these are the sensory park ideas for our kiddos with special needs. They really really enjoy these spinners for some reason and it'll give them much much pleasure for playing options.

Thank you!

Tracy Butler







Thank you for the input, Tracy.

I know all the designs we have looked at have had spinners like these and additional sensory play. There is usually at least one swing in the bank of swings , like the one you have below. We are also working on the early designs for North Community Park, which would be our most accessible park. The timeline would be late this year or early next year.

Hi Mike,

Oh ok, I am looking forward to the convenience of my son enjoying the sit n spin in our area. Hopefully you guys can add the bowl especially in one of the upcoming parks. In any-case, I appreciate

you updating me. I'm sure it's gonna be a wonderful addition to the community here in Rogers. Enjoy your weekend!

Thank you,

Tracy Butler



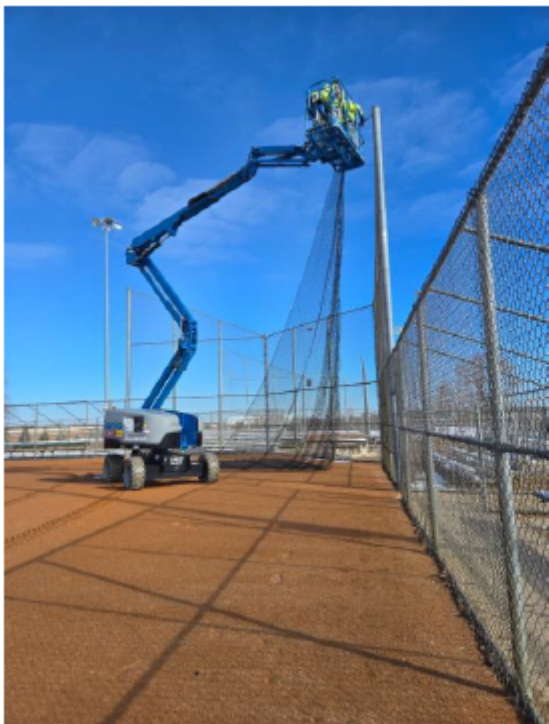
Staff Updates

Parks Department

Regular maintenance, any necessary replacements, and cleaning have been done to the park equipment. Soon, the plows will be removed from the utility tractors and used for spring and summer projects.



Foul nets were put back up at fields, and some posts were removed from the playground area at North Community Park (NCP) earlier this week. The posts removed from the playground supported a material serving much like a trampoline. The material became unsafe and was removed a while ago. The posts began showing their age and some cracks, so they were also removed as a safety precaution. It was decided to remove these posts rather than to replace them since some of the play equipment at NCP will be replaced soon.



Parks staff began building a sign for South Community Park. The boards have been cut, sanded and painted and the letters are ready for paint and will be added when they are completed. Stay tuned for more progress on this project...



Field Numbers and Distance Markers for SCP:



Activity Center Landscaping Update

After 18 years, the trees in front of the Activity Center had grown to the point where they blocked the security cameras. The crab trees were also removed because they were malformed from being trimmed away from the building annually. The Parks Department removed the trees today and will landscape the area, similar to the updates at Fire Station 1 and

the Police Department. This update will improve foot traffic, safety, increase natural light into the building and give a fresh look for the rebranding that will take place this fall with the naming rights.



Event Center

Events in March:

- 16 Non-profit (reduced fee)
- 5 City (no fee)
- 5 Paid (full fee)

March Booking Statistics:

- 11 contracts processed for 2025 events
- 0 contracts processed for 2026 events
- 186 event center related emails sent
- 22 new inquiries about future rentals
- 8 facility tours

Event Center Notes:

The sound system needed a tweak in settings to play sound in the hallway.

The kitchen freezer was replaced.

The Glass Washer under the bar was replaced with a small ice maker.

21st Century Bank Event Center Use & Revenue Statistics for March 2025:

Account Type	Hours Used	Total Revenue
Individual	42.25	\$ 5,602.50
Internal	10.5	\$ 0
Non-Profit	70.5	\$ 3,655.00
Total	123.25	\$ 9,257.50

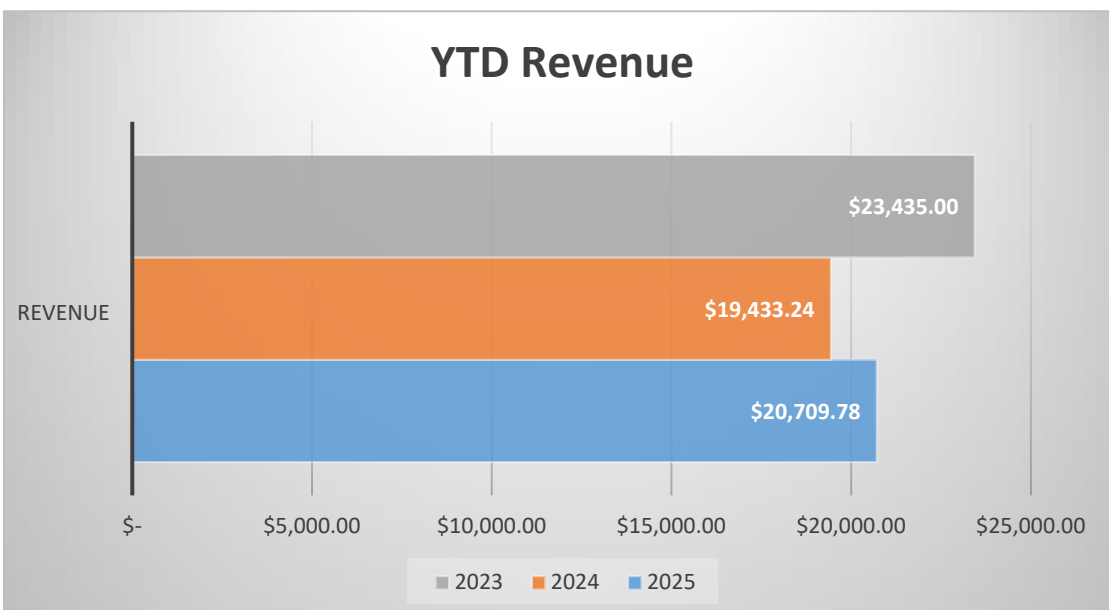
21st Century Bank Event Center Projected Use & Revenue for April 2025:

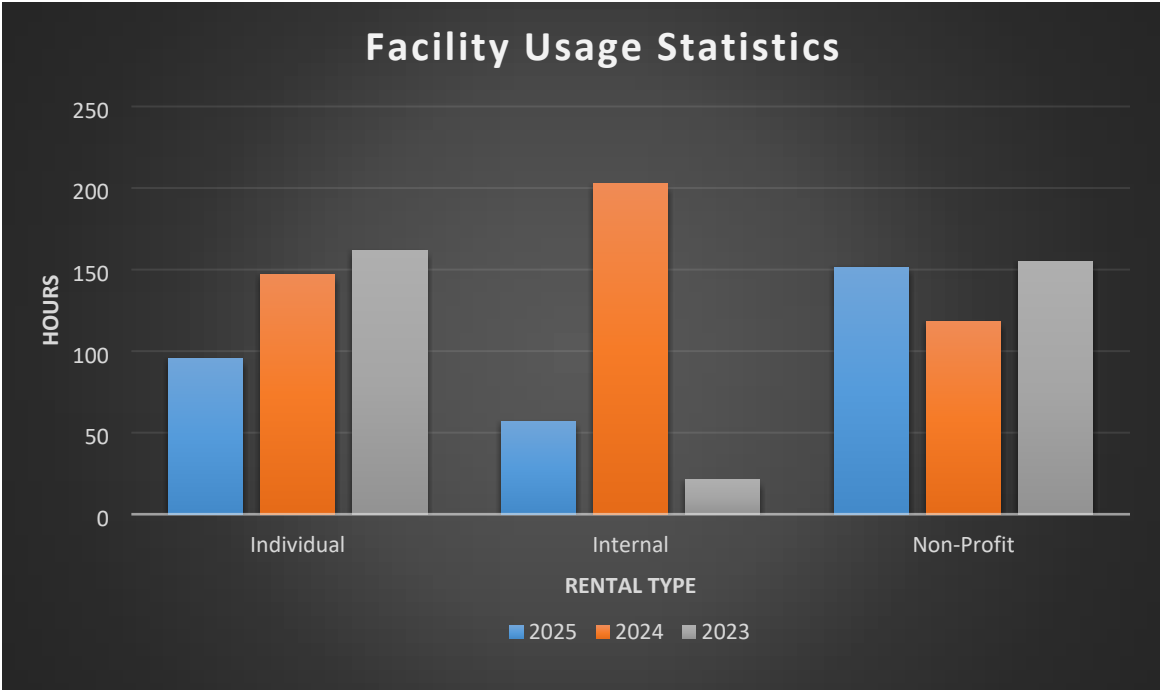
Account Type	Hours	Total Revenue
Individual	23.00	\$ 2,995.00
Internal	10.50	\$ 0
Non-Profit	67.50	\$ 4,015.00
Total	107.25	\$ 7,127.50

21st Century Bank Event Center Projected Use & Revenue for April-December 2025:

Account Type	Hours	Total Revenue
Individual	391.50	\$ 71,160.00
Internal	458	\$
Non-Profit	418	\$ 18,672.50
Total	1267.50	\$ 89,832.50

2025 YTD vs 2024 & 2023 YTD Revenue & Usage Statistics:





“Individual” are all rentals done by the public

“Internal” are those done by City Departments (Police, Fire, Elections, Public Works, Finance)

“Non-Profit” are all renters who qualify for 501 c3 status

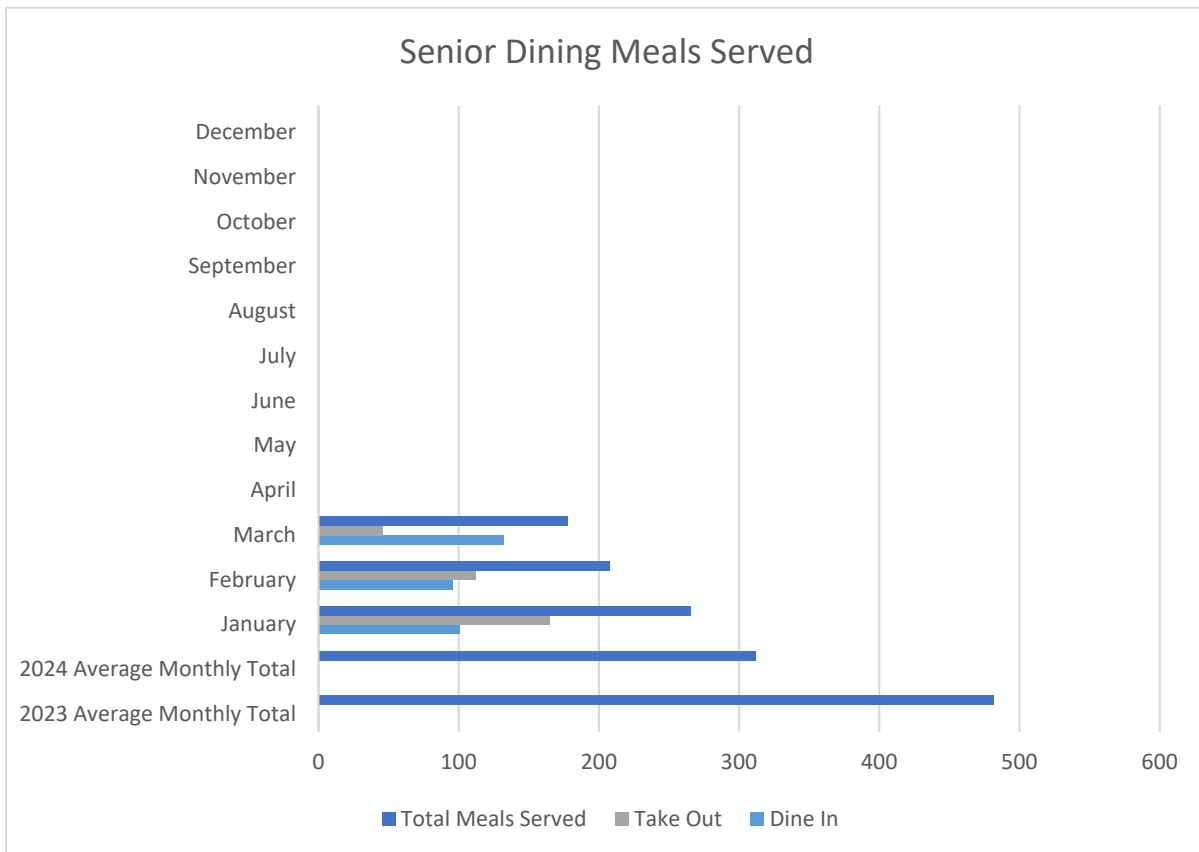
Senior Center Updates:

Below is a chart showing the number of meals served so far in 2025 and are divided out to show the Total Meals Served, Take Out Meals, and Dine In meals. The price of meals increased from \$5 to \$7 starting in January 2025.

2023 average monthly meals are based only on the months of March-December due to available data.

March did not have any meals on the 19th (Teresa at Conference) or on the 20th (low enrollment).

We no longer have Heritage Place ordering take-out meals while they are figuring out their management change.



Program Updates:

Ongoing Program Attendance in March:

Grocery Bus: 13 participants

Card Club: 62 participants

Community Café: 108 participants

Book Club: 9 participants

Attendance not tracked at Jammers or Caregiver Support Services this month.

Events:

Mardi Gras Mixer – March 4th

Our Mardi Gras Mixer at the Rogers Senior Center was a lively and festive celebration filled with vibrant colors, upbeat music, and delicious Cajun-inspired cuisine! A total of 12 meals were served as attendees embraced the spirit of New Orleans with themed activities, creative mask-making, and a flavorful lunch featuring MN-Mild Baked Cajun Chicken, Red Beans & Rice, Coleslaw, and King Cake.

The day kicked off at the Community Café, where guests enjoyed a selection of treats to set the tone for Fat Tuesday. At 11:00 AM, participants got crafty with a Mardi Gras mask-making session, followed by a delicious meal at noon. Our festive mocktail bar added to the fun, serving up colorful, non-alcoholic drinks.

After lunch, the excitement continued with a spirited costume contest, where attendees voted for the Most Festive, Best Mask, and Most Creative outfits. The celebration wrapped up with an afternoon of games, including Pinochle, Texas Canasta, Billiards, and Cornhole.



Mardi Gras Mask Making



Mardi Gras Costume Contest Winners



Mardi Gras Mixer



March Birthday Celebration & Pi Day Party – March 13

Our March Birthday Celebration & Pi Day Party was a sweet success, with 22 meals served and plenty of pie to go around! Guests gathered at noon for a delicious lunch, sharing great food and warm conversation while celebrating those with March birthdays.

After the meal, we honored the occasion with an assortment of pies in recognition of Pi Day (3.14), making for a perfect ending to the afternoon.



PI Day Birthday Celebration

Shamrocks & Shenanigans Springtime Luncheon – March 18, 2025

Our **Shamrocks & Shenanigans Springtime Luncheon** was a fantastic gathering filled with festive fun, lively entertainment, and great company! A total of **49 meals were served** as guests enjoyed a day celebrating the spirit of St. Patrick's Day and the arrival of spring.

The event kicked off with a spirited game of **Bingo**, sponsored by Volante Senior Living, where participants competed for fun prizes. The excitement continued with an incredible **live music performance by Vinnie Rose**, whose captivating tunes set the perfect ambiance for lunch. Guests savored a delicious meal while enjoying the performance, making for a truly special dining experience.

After lunch, many attendees stayed to enjoy **Pinochle and Texas Canasta**, rounding out the day with engaging card games and friendly camaraderie.



Shamrock & Shenanigans Bingo sponsored by Volante Senior Living



**Shamrock & Shenanigans Lunch with Live Music by Vinnie Rose
Seniors Pickleball**

Date	Participants	Revenue
3/7/2025	11	\$55.00
3/14/2025	10	\$50.00
3/21/2025	Spring Break	\$-
3/28/2025	14	\$70.00
Total	35	\$175.00

Learn to Skate

Class	Participants	Revenue
Adult/Teen Class	6	\$414.00
Basic Skills 1	11	\$759.00
Basic Skills 2	19	\$1,311.00
Basic Skills 3	7	\$483.00
Basic Skills 4	6	\$414.00
Hockey 1	12	\$828.00
Hockey 2	12	\$828.00
Hockey 3	4	\$276.00
Hockey 4	1	\$69.00
Hockey Edge	4	\$276.00
Snowplow Sam 1	35	\$2,415.00
Snowplow Sam 2	28	\$1,932.00
Snowplow Sam 3	20	\$1,380.00
Snowplow Sam 4	9	\$621.00
Total	174	\$12,006.00

- Spring Session had 165 participants in 2024
- Summer Sessions registration pages have been created on Finnly, to go live on 4/1



Adult Softball

- 14 of our 2024 teams returned, one decided to retire
- Games will start Monday, May 5 at North Community Park and Lynch Park

Proposed Revenue		
Team registration fee	14 teams @ \$800/each	\$11,200.00
Total Revenue		\$11,200.00
Proposed Expenses		
Umpire fees	182 games @45/each	\$8,190.00
Softballs	14 dozen @ \$60/dozen	\$840.00
Team sanction fee	14 teams @ \$25/team	\$350.00
Total Expenses		\$9,380.00
Difference		\$1,820.00

Community Gardens

- Returning gardener registration opened on March 1
- Two of our 27 gardeners informed me they will not be returning this season
- The two available garden plots were immediately filled when registration opened for new gardeners
- I received seven phone calls and two emails asking about garden availability on the day registration opened for new gardeners, this is something the community is interested in
- Brought in \$780 from registration fees

Farmers Market

- We have received 13 Farmers Market vendor applications
 - The Goat House Farm Co
 - Svihel Vegetable Farm
 - Pure Nature Honey LLC
 - Larson Farms
 - Gerald Heggem Art
 - Pond Heaven Farm
 - Yer Farmers Market
 - Great Harvest Bread Co
 - Ken's Craft Cove
 - Becks Greenhouse
 - Cha Garden
 - Rin's Backyard Garden Patch
 - Trusted Services LLC
- Eight new vendors and five returning
- We are reviewing the crop/farm applications to access which vendors would be a good fit, we do not want to oversaturate the market with too many duplicate vendors

Facility Rentals

LCP Sunroom	Rentals	Revenue
Private Rentals	7	\$1,216.25
City of Rogers	1	\$-
LCP Pavilion		
Private Rentals	0	\$-
City of Rogers	0	\$-
LCP Combo		
Private Rentals	1	\$180.00
City of Rogers	0	\$-
NCP Pavilion		
Private Rentals	0	\$-
City of Rogers	0	\$-
Total		\$1,396.25

- Summer rentals are filling out, 38 private rentals are currently scheduled between May-August

