



AGENDA

Rogers Parks and Recreation Advisory Commission

May 14, 2026 - 5:30 PM

1. CALL TO ORDER AND PLEDGE OF ALLEGIANCE

2. OPEN FORUM

Individuals may address the Council about any item not contained on the regular agenda. A maximum of 10 minutes is allocated for the Forum. If the full 10 minutes are not needed for the Forum, the Mayor will continue with the agenda. If additional time is needed for the Forum, the Council will continue the Forum following Other Business on the agenda. The Council will take no official action on items discussed at the Forum, with the exception of referral to staff or Commission for future report.

3. PRESENTATIONS

4. APPROVE AGENDA

Council members may add items to the agenda for discussion purposes or staff direction only. The Council will not normally take official action on items added to the agenda.

5. CONSENT AGENDA

These items are considered to be routine and will be enacted by one motion. There will be no separate discussion of these items unless a Councilmember so requests, in which event the item will be removed from the Consent Agenda and placed elsewhere on the agenda.

5.1 Approval of Minutes

6. GENERAL BUSINESS

6.1 Recommendation of Playground Final Design for Sunnyside Park

6.2 Recommendation of Playground vendor for North Community Park

6.3 2026 Work Plan

7. OTHER BUSINESS

8. CORRESPONDENCE AND REPORTS

8.1 Correspondence

9. ADJOURN



STAFF REPORT

**ROGERS PARKS AND
RECREATION ADVISORY
COMMISSION**

Meeting Date: May 14, 2026

Agenda Item: 5.1

Subject: Approval of Minutes

Prepared By: Marcy Dalchow, Public Works Administrative Assistant

Overview / Background / Analysis

Staff Recommendation

Move to approve the April 2026 PRAC minutes.

Financial Impact:

Source Fund:

Budgeted?

Supporting Documentation

A. April 9 2026 Park Commission Minutes

**Park and Recreation Advisory Commission Meeting Minutes
April 9, 2026**

1. CALL TO ORDER AND PLEDGE OF ALLEGIANCE

The Park and Recreation Advisory Commission (PRAC) meeting of the City of Rogers was called to order by Chair Fuller on Thursday, April 9, 2026, at 5:30pm in the 21st Century Bank Event Center 12716 Main Street, Rogers MN, 55374.

Roll Call

Dale Fuller	Parks and Recreation Advisory Commissioner –
Peggy Warfield	Parks and Recreation Advisory Commissioner - Vice Chair
Paul Hacker	Parks and Recreation Advisory Commissioner
Judi Volkers	Parks and Recreation Advisory Commissioner
Mike Volkers	Parks and Recreation Advisory Commissioner
Sam Okland	Parks and Recreation Advisory Commissioner Left 7:30pm
Chris Morrow	Parks and Recreation Advisory Commissioner
Abigail Reilly	Parks and Recreation Student Representative
Shannon Klick	Rogers City Council – Mayor
Mike Bauer	Parks and Recreation Director
Brian Binkley	Sunnyside Neighborhood
Gina Binkley	Sunnyside Neighborhood
Van Satlak	Sunnyside Neighborhood
Diane Ensmingh	Sunnyside Neighborhood
Tony Hoagland	Rogers Otsego Youth Baseball Association
Alioua Tkach	Territorial Park Neighborhood
Ashley Wilson	Territorial Park Neighborhood

2. OPEN FORUM None

3. PRESENTATIONS

3.1 Sunnyside Park Playground Presentation

Over the past year, the Parks and Recreation Advisory Commission (PRAC) has collected feedback from residents, nearby neighbors, and regular park users regarding desired features for the replacement of the existing playground at Sunnyside Park. All community feedback received to date has been shared with the playground vendors to inform them about their design work.

At the December 2025 PRAC Meeting, the Commission selected two vendors to provide final design concepts. The Commission provided feedback to be incorporated into their designs.

Notices were mailed to approximately 180 homes within 300 feet of Sunnyside Park, inviting them to attend, ask questions, and provide input. Community feedback received prior to the meeting was included in the meeting packet.

A Representative from St, Croix Recreation presented a playground design focused on inclusive, multi-age use. Key features of the proposal included: Separate but connected play areas for ages 2–5 and 5–12, accessible sandbox/playhouse area with integrated seating and play features and accessible diggers and shaded structure, a zipline-style track ride (~70+ feet long), multiple climbing, balancing, and coordination elements, 27 total play activities (including elevated and ground-level options), Inclusive and accessible

design for all ages and abilities, large spinner and group swing elements, integrated shade structures over play areas, bright, customizable color options, using durable materials designed for long-term use (~20-year lifespan). This vendor emphasized designing for long-term engagement, allowing children to grow into the equipment rather than outgrow it.

A GameTime Representative was unable to attend this meeting, so Director Bauer presented the designs he received. GameTime presented many of the same features as the other vendor with a more traditional zipline. Game Time’s design offered more platforms, climbing structures and slides.

After the presentation, the Commission heard community feedback regarding the two playground designs. The consensus leaned toward the GameTime concept. There was strong community preference for including a zipline feature. There were requests for revisions to reduce or redesign sandbox footprint and to improve visibility and openness for safety. As well, they would like to add some bike racks and shade over seating areas.

The PRAC asked the GameTime design be revised, once approved, staff will present this to Council for approval. Lead times for the equipment could be as long as 15-20 weeks. Installation will be in the fall at the earliest.

4. APPROVE AGENDA

4.1 Approval of Consent Agenda Approved as submitted

Motion to approve the agenda by J. Volkens, seconded by Morrow. Motion carried 7/0.

5. CONSENT AGENDA

5.1 Approval of the February 2026 PRAC Minutes

Motion to approve February 12, 2026 Minutes by Morrow, seconded by Warfield. Motion carried 7/0.

6. GENERAL BUSINESS

6.1 South Community Park Concessions

During the 2025 summer baseball season, Rogers Otsego Youth Baseball Association, (ROYBA) operated the South Community Park (SCP) concessions on a trial basis. Due to the success of this trial, staff issued a Request for Proposals for the operation of concessions at SCP. One proposal was received from ROYBA. Staff recommend awarding ROYBA the concession operations contract for the 2026 season along with an inclusion for an annual equipment replacement fee of \$1200.

Tony Hoagland, a representative of ROYBA was present and shared some information regarding tournaments and concession sales. Hosted tournaments can generate 3,000–\$5,000 per weekend tournament weekend and \$6,000 during a major event weekend. This revenue supports youth programming, reduces player costs and provides funds for equipment and facility improvements.

The PRAC was in favor of this, providing funds earned be used in the Rogers Community.

Motion to recommend staff create a service agreement with ROYBA for the use of the SCP Concessions Stand. by J. Volkens, seconded by Morrow. Motion approved 7/0.

6.2 Consider Advertisements/Sponsorships for South Community Park Ballfields

The Youth Baseball Association presented a proposal to establish ongoing revenue to support maintenance, capital improvements, and long-term facility sustainability through sponsorships. The proposal seeks to provide revenue through sponsorship tiers, naming rights, etc.

Proposed sponsorship opportunities immediately identified were outfield fence advertising banners, scoreboard sponsorships. ROYBA prefers local, nonprofit-led sponsorship model vs. third-party marketing firms.

The following concerns were noted. long-term management of sponsorship program and ensuring funds remain dedicated to South Community Park.

Motion to have staff to explore this concept further, and to identify guiding principles for program. Then bring back options, revisions or alternative models aligning with community values and operational feasibility by Morrow, seconded by Warfield. Motion approved 7/0.

6.3 Rogers High School Baseball Booster Club request

The Recreation Department has received a request from the Rogers Dugout Booster Club seeking a partnership to complete batting cages and bullpen improvements to the Rogers High School baseball field jointly owned by the City of Rogers and ISD 278.

This project includes a partnership opportunity between the City of Rogers, ISD 728, TRIA, Prairie Contracting and the Booster Club. The City's share of the project is \$6200.

After discussion the following motion was made:

Motion to recommend the City of Rogers participant in this project, providing \$6200 with the stipulation the enhancements are available to all through community access by Warfield, seconded by Okland. Motion carried, 7/0.

6.4 Recommendation of Playground Vendor for Sunnyside Park

The PRAC asked the GameTime design be revised, once approved, staff will present this to Council for approval. Lead times for the equipment could be as long as 15-20 weeks. Installation will be in the fall at the earliest.

6.5 Consider a Working Group for Territorial Park

Two homeowners near Territorial Park have requested the PRAC consider establishing a task force or working group to further discuss Territorial Park and engage directly with nearby homeowners who continue to express concerns about the new Territorial Park.

The primary concerns heard from residents nearby the park were, loss of privacy due to elevated park design, noise and high activity levels, safety concerns for children, individuals cutting through private yards, litter and lack of garbage receptacles, vandalism and disruptive behavior, off-leash dogs, insufficient screening (trees too small, no fencing allowed).

The PRAC expressed their desire to work towards a solution to this issue, however, there are no immediate answers. This park has been in the Master Park Plan for years. Some things that will be addressed right away are: the trees will be straightened. Garbage cans and park signage stating park rules have been ordered. Budget constraints limit large scale solutions such as larger trees or a city-built fence.

The PRAC suggested homeowners express their concerns to their homeowner's association, maybe they would change the rules regarding privacy fences. It was also suggested loud activity after hours. off leash

dogs be reported to our police department to help with rule enforcement. The mayor and the PRAC assured them their concerns were being heard, however there is not an easy solution to this issue.

6.6 Indoor Turf Season 2 Allocation

Staff reported a “good problem” at the field house, with demand for space now exceeding available time slots. Several groups that previously requested little or no time are now requesting significant usage, while existing user groups are also increasing their requests for the upcoming season.

The Commission discussed how to fairly allocate time moving forward, particularly given the existing prioritization policy based on residency and school district alignment.

The direction from the PRAC was to maintain fairness by applying the policy consistently, considering prior usage, but not as the sole determining factor and to work collaboratively with user groups to:

- Distribute time equitably, maintaining relationships with consistent users
- Providing access to local, high-priority groups
- Maximizing facility usage without turning away demand

6.7 2026 Work Plan Draft Reviewed

Highlights:

- The former City Hall, police, and fire building has been demolished Groundbreaking for new senior building and senior center is scheduled for April 30 at 11:00 AM.
- Ryland Brown, former Recreation Intern and current part-time staff has been hired as the new Rental Coordinator. He will transition to a full-time role as of April 15.
- Current staff member transitioning to full-time senior programming
- North Community Park to Mallard Estate Trail and Astro Mills Trail projects have been approved and scheduled for completion this summer
- There is a potential new location for a skating rink on the north side of Rogers near Hassan Elementary School. It is an 11-acre parcel that will be shared with Fire Department as a training facility Staff will gather more information on this.
- An ADA accessible trail from parking lot, drinking fountain and a hydrant are being installed at Lynch Park.
- Groundbreaking for the 2nd sheet of ice will be planned sometime around June 8th.

7. OTHER BUSINESS None

8. CORRESPONDENCE AND REPORTS

8.1 Correspondence and Staff Update Reviewed

Highlights:

- The City of Rogers Website redesign is underway. Enhancements include usage analytics, improved access to park and facility information and QR code integration for rentals and park info.
- Staff are hoping to work with Eagle Scouts to document park history.
- Staff are working with the contractor regarding ongoing issues with outdoor rink surface quality at SCP.

9. ADJOURN

Motion to Adjourn at 8:10pm by Morrow, seconded by Warfield. Motion carried 6/0.



STAFF REPORT

ROGERS PARKS AND RECREATION ADVISORY COMMISSION

Meeting Date: May 14, 2026

Agenda Item: 6.1

Subject: Recommendation of Playground Final Design for Sunnyside Park

Prepared By: Mike Bauer, Parks & Recreation Director

Overview / Background / Analysis

At previous meetings, the Commission reviewed two finalist vendors for the Sunnyside Park playground replacement project:

- St. Croix Recreation (Burke)
- Minnesota–Wisconsin Playgrounds (GameTime)

Both vendors presented complete designs and concepts, and community feedback was solicited at and prior to the Commission's last discussion. Attached to this memo are updated cost quotes provided by GameTime/MWP Recreation for the revised Option 2 concept.

Summary of Community and Commission Feedback:

- Community input indicated a clear preference for the GameTime concept.
- Residents emphasized the importance of including a zipline feature, viewed as a high-value and highly used amenity by nearby park users.
- Commissioners noted that GameTime's design offered more platforms, climbing features, slides, and varied play opportunities compared to the Burke concept.
- Several safety- and layout-related revisions were requested, including:
 - Reducing or redesigning the sandbox footprint
 - Improving visibility and openness in the central play area
 - Adding bike racks
 - Providing shade over seating areas, which is addressed in the updated proposal through shade umbrellas and canopy options

Based on direction from the Commission, staff requested revised pricing and concept adjustments from GameTime, now included in the attached quotes.

The following quotes were provided by the GameTime/MWP Recreation team for the Sunnyside Option 2 concept:

- GameTime Play Equipment Quote: \$248,045.91
 - Installation & Drain Tile Quote: \$51,954.09
- Total Combined Project Cost: \$299,999.99

These costs include equipment, poured-in-place surfacing in key fall zones, engineered wood fiber installation, shade structures, benches, and the SkyRun Zip Track zipline

feature. Site preparation, removal of existing equipment, and drainage modifications remain City responsibilities.

Game Time Proposal

To finalize the design package for City Council, the Commission is asked to confirm whether the following adjustments should be included:

- Modifications to this layout
- Final color selections and aesthetic considerations
- Any additional refinements the Commission deems necessary
- Recommendation to City Council

Staff Recommendation

Financial Impact:

Source Fund:

Budgeted? Yes

Supporting Documentation

- A. I-D12925L2-SunnysideOpt2_Quote
- B. M-D12925L2-SunnysideOpt2_Quote
- C. D12925L2-20V-OVERALL
- D. D12925L2-Opt2-Festive-1
- E. D12925L2-Opt2-Festive-2
- F. D12925L2-Opt2-Festive-3
- G. D12925L2-Opt2-Festive-4
- H. D12925L2-Opt2-Festive-5

QUOTE

106743-01-09 • 05/12/2026



I-RFP Sunnyside Park - Option 2 - Rogers, MN - D12925L2

Customer:

City of Rogers
22350 S. Diamond Lake Rd.
Rogers, MN 55374
United States

Ship to Zip: 55374

Prepared for:

Mike Bauer
Phone: 763-428-0974
mbauer@ci.rogers.mn.us

Prepared by:

MWP Recreation
4800 Olson Memorial Hwy, Suite 130
Golden Valley, Minnesota 55422
Ph. 800-622-5425 | 763-546-778 |
dan@MWPRecreation.com

**ACCOUNT
EXECUTIVE: DAN
LANES**

Quantity	Part #	Description	Unit Price	Amount
1	LUMP	Other - Drain Tile Installation	\$7,650.00	\$7,650.00
1	INSTALL	Install - Installation of Play Equipment <ul style="list-style-type: none"> • Unpack Equipment • Layout/Dig Footing Holes • Assemble Playground Equipment/Site Amenities • Pour Concrete Footings • Dispose of Packing Materials 	\$44,304.09	\$44,304.09
			Sub Total	\$51,954.09
			Grand Total	\$51,954.09

Comments

Owner is responsible for accepting delivery and storage of play equipment
Owner is responsible for removal of existing play equipment, safety surfacing, and drainage
Owner is responsible for providing a flat and level area with less than 1% grade change



QUOTE

106743-01-09 • 05/12/2026



This quotation is subject to current MWP Recreation (MWP) policies as well as the following terms and conditions. Our quotation is based on shipment of all items at one time to a single destination, unless noted, and changes are subject to price adjustment. Purchases in excess of \$1,000.00 to be supported by your written purchase order made out to MWP Recreation.

Each quote is handled on a per order/project basis. Unless a long-term agreement is in place between purchaser and MWP, terms and conditions of this quotation shall be as outlined herein with no other requirements applicable.

Any changes made to product and/or services after initial order(s) has/have been received by MWP will result in production and/or schedule time frame modifications. Please contact your regional representative to receive a revised schedule for your order/project.

Indemnification; Owner/Owner's Representative will indemnify and hold Minnesota Playground, Inc., dba, MWP Recreation (MWP), harmless for all claims, damages and related costs, including reasonable legal fees and costs, arising out of Owner/Owner's Representative's negligence or noncompliance with any of its commitments under this document. MWP will indemnify and hold Owner/Owner's Representative harmless for all claims, damages and related costs, including reasonable legal fees and costs, arising out of MWP's negligence or noncompliance with any of its commitments under this document.

Excusable Delays/Additional Costs: MWP, and/or its affiliates, shall be liable for default unless delay of performance, whether supplying materials only or including installation in accordance with our project scope, is caused by an occurrence beyond reasonable control of MWP, and/or its affiliates, such as, but not limited to, acts of Superior Force or the public enemy, acts of Government in either its sovereign or contractual capacity, fire, floods, epidemics, quarantine restrictions, strikes, unusually severe weather, delays of common carriers (for transportation of goods whether raw materials or finished product), attainability of raw materials and severe tariffs. Such events resulting in additional costs are not included in quoted amounts and shall be the responsibility of the Owner/Owner's Representative. Any additional costs shall be provided in writing for purchaser's records and shall be due upon payment of invoice.

Pricing: f.o.b. factory, firm for 15 days from date of quotation. If placing an order after expiration of quote, please contact our office for updated pricing. A tax-exempt certificate is needed at time of order entry for all orders whether from tax-supported government agencies or not. Sales tax, if applicable, will be added at time of invoice unless a tax exempt certificate is provided at time of order entry.

Payment terms: net 30 days for tax supported governmental agencies. Should this quotation be forwarded to an agency not listed on this quote, credit terms, as well as other terms and conditions herein, may be need to be altered. For instance, non-tax supported organization purchasing any or all products and/or services quoted herein may require full payment for that amount due at time of order entry. Remaining balance owed by tax supported agency, if any, shall still be net 30 days. A 1.5% per month finance charge will be imposed on all past due accounts. Equipment shall be invoiced separately from other services and shall be payable in advance of those services and project completion. Retainage not accepted.

Unless already on file, please include a tax exempt certificate upon order entry whether a tax supported government agency or other.

Installation: shall be by a Certified GameTime Installer. Customer shall be responsible for scheduling coordination and site preparation. Site should be level and permit installation equipment access. Purchaser shall be responsible for unknown conditions such as buried utilities, tree stumps, bedrock or any concealed materials or conditions that may result in additional labor or material costs.



QUOTE

106743-01-09 • 05/12/2026



Project Scope:

Please note, installation is based on site being ready prior to our arrival to install play equipment as well as site conditions that have been conveyed to our organization by the owner/owner's representative and/or ideal conditions existing for a timely completion of your project as quoted. Unless addressed prior to the installation quote being issued or specifically mentioned herein, any issues that arise that impede the progress/completion of your project as quoted will result in additional charges.

Weather can change project scheduling in many ways. Take rain for an example. Day, or days, before rain... If weather forecasts show a high percentage chance for rain that will effect the site conditions, a postponement may be in order. Digging holes, laying certain surfacing materials, etc., are greatly affected by weather conditions and work may not begin/continue due to weather forecasts. There's the rain days themselves, which if heavy enough rainfall occurs, makes a site unworkable. Day, or days, after rain... Drying time will be needed after rain and the number of days needed will vary depending on amount of moisture received. One actual rain day may equal multiple delay days depending on work scheduled to be done.

+ INCLUSIONS +

- + One mobilization
- + Public utility locates only
- + Installation of equipment as outlined in Quote #106743-01-08
- + Marking and digging of footings holes to accept direct embedment supports as needed
- + Unpacking of play equipment
- + Assembly of play equipment
- + Concrete for footings as needed
- + Pouring of concrete for footings
- + Engineered wood fiber (EWF) surfacing
- + Poured-in-place safety surfacing
- + Drain tile
- + Construction tape/temporary bracing (as needed)
- + Standard insurance offerings
- + Standard warranty offerings
- + Standard industry accepted labor wages
- + Disposal of packing material

- EXCLUSIONS -

- Clear access path up to and into play area for installation equipment (minimum of 8-foot wide, includes but not limited to gates, walkways, driveways, etc.)
- Staging area for materials and installation equipment, trailers, etc.
- Unobstructed space for maneuvering installation equipment as well as performing work
- Security fencing of any type
- On site security personnel
- If fencing is in place (by others), ability to unlock fencing is to be provided to our office a minimum of one week prior to our start
- Private utility locates such as, but not limited to, irrigation, fiber optics, private lighting, etc.
- Accepting, unloading and storage of order(s)/shipment(s) prior to installation. Please note, orders can be packaged/shipped in large crates, pallets, etc., requiring heavy-duty equipment to unload.
- Sitework of any kind such as, but not limited to, grading (play area to have max slope of 1%), site restoration, drainage, etc.
- Removal of existing play equipment, border, safety surfacing, etc.
- Backfill and compaction of backfill after removal of existing items (for footing holes as an example) that leave voids in area (marking and digging of new footing holes based on workable site)
- Digging in compacted sub-surfaces, rock, hard pan, tree roots, unstable soil conditions, etc.
- Restoration of compacted sub-surfaces for playground surfacings such as, but not limited to, poured-in-place rubber, rubber tiles, artificial turf, etc.
- Digging/maneuvering in sand, pea gravel, mud, etc.
- Offsite removal of spoils from footing holes (can be stockpiled near play area for owner/owner's representative removal or spread within play area)
- Border to help contain playground safety surfacing
- Removal of temporary braces, caution/construction tape, etc. (Can be removed and disposed of after concrete has cured.)
- Bonding of any type
- Permits of any kind
- Prevailing, Davis Bacon, Union, or similar, wages

QUOTE

106743-01-09 • 05/12/2026



- Restroom facilities. Please provide access to restrooms whether within a building or portable style. Should use of site facilities not be available, additional charges will be required to bring on site temporary/portable restrooms. These temporary facilities will be removed once your project has been completed.

- Short term maintenance, check manufacturer's owner's manual recommendations for maintenance and always follow these written instructions. To help set up short (and ongoing) term maintenance, use the first twelve months to regularly check equipment (such as, but not limited to, tightening hardware, checking moving features, etc.). Twelve months allows use in all seasons and will provide a better understanding of what will be necessary for your ongoing maintenance. This short term schedule will be based on the amount of use the play equipment is getting as well as the type of play event that is being played on. Activities with movement have a more dynamic play which can lead to more maintenance due to the nature of the motion but also because these types of play events tend to be more popular. Static features may require less attention during the short term and ongoing maintenance as inspections will determine frequency of maintenance needed for these events. There may be a need for scheduled lower and higher frequency inspections.

- Ongoing maintenance, check manufacturer's owner's manual recommendations for maintenance and always follow these written instructions. After short term maintenance period is done and data is collected for that time period, an ongoing schedule should be implemented. The ongoing maintenance can change with age and greater use. There may be a need for scheduled lower and higher frequency inspections.

Should weekend work be necessary or non-standard hours be worked, please provide a site contact and the best telephone number to reach this person in case an urgent matter arises requiring immediate attention.

(Name) _____

(Cell) _____

(Other Telephone Number) _____

Wet Site Conditions: installation areas located near wetlands, where a high water table exists or in any environment that produces excessive moisture will require additional planning prior to installation of your project. Unless excessively wet conditions have been conveyed prior to installation quote and accounted for in some manner, your installation will not proceed. Ideal dry conditions need to be present to begin, and complete, your project as quoted.

Exclusions: unless specifically included, this quotation excludes all site work and landscaping; removal of existing equipment; acceptance of equipment and off-loading; storage of goods prior to installation; equipment assembly and installation; safety surfacing; borders and drainage provisions.

Order Information:

Bill To: _____ Ship To: _____

Company: _____ Project Name: _____

Attn: _____ Attn: _____

Address: _____ Address: _____

City, State, Zip: _____ City, State, Zip: _____

Contact: _____ Contact: _____

Tel: _____ Tel: _____

Email: _____ Email: _____



QUOTE

106743-01-09 • 05/12/2026



Acceptance of quotation:

Accepted By (printed): _____ P.O. No: _____

Signature: _____ Date: _____

Title: _____ Phone: _____

Facsimile: _____ Purchase Amount: **\$51,954.09**



QUOTE

106743-01-08 • 05/12/2026



M-RFP Sunnyside Park - Option 2 - Rogers, MN - D12925L2

Customer:

City of Rogers
22350 S. Diamond Lake Rd.
Rogers, MN 55374
United States

Ship to Zip: 55374

Prepared for:

Mike Bauer
Phone: 763-428-0974
mbauer@ci.rogers.mn.us

Prepared by:

MWP Recreation
4800 Olson Memorial Hwy, Suite 130
Golden Valley, Minnesota 55422
Ph. 800-622-5425 | 763-546-778 |
dan@MWPrecreation.com

ACCOUNT
EXECUTIVE: DAN
LANES

Quantity	Part #	Description	Unit Price	Amount
1	RDU	GameTime - Powerscape Spire Tower Play Unit, Ages 5-12 <i>Custom: 2 Color HDPE: _____, Accent 2: _____, Accent: _____,</i> <i>Arch: _____, Basic: _____, Cabling: _____, Deck:Pvc: _____,</i> <i>HDPE: _____, Metal Roof: _____, Roto Plastic: _____, Tube:</i> _____ <ul style="list-style-type: none"> • (4) 80000 – 49" Sq Punched Steel Deck • (1) 80931 – Single Gizmo Panel • (1) 81669 – Hand Cyclor • (2) 90266 – 8' Upright, Alum • (1) 90270 – 12' Upright, Alum • (2) 90271 – 13' Upright, Alum • (2) 90273 – 15' Upright, Alum • (1) 90355 – Store Front Panel, Below Dk • (2) 90538 – 60" Roof Extension W/Cap • (1) 90551 – Square Modern Roof • (1) 90579 – Double Swerve Slide • (1) 90639 – Spiral Climber (5'-0" & 5'-6") • (3) 90704 – Left Curve Section Wilderslide li • (1) 90709 – Support Wilderslide li • (1) 90762 – Long Exit (Use On 7' & 8' Slides) • (1) 90790 – Sloped Funnel Climber Barrier (Dbl) • (1) 90844 – Double With Spiral • (1) 91620 – Hi-Line Climbing Link 1' Rise • (1) 91649 – Circle Climb 5'-0"-6'-0" • (1) 91719 – Modern Transfer w/Barrier 4' Rise • (1) 91740 – Narrows Climber (7'6"-9') • (1) 91769 – Altus X Tower Tube To S Slide • (1) 91810 – Altus Spire 12' - Slide Left • (3) 91873 – Hoop Roof (3 Deck Span) • (1) 91881 – Ascent Climber • (2) 91931 – Entryway (Versa) 	\$81,469.50	\$81,469.50



QUOTE

106743-01-08 • 05/12/2026



- (2) 91932 – Hi Point Entryway (Versa)
- (3) 91934 – Offset Entryway (Versa)
- (1) 91938 – Enclosure (Versa)
- (1) 91968 – Archway with Socket (Versa)
- (1) 91977 – Ludo Game Panel
- (1) 95159 – Exuma Seat
- (1) G90270 – 12' Upright, Galv
- (3) G90272 – 14' Upright, Galv
- (10) G90273 – 15' Upright, Galv
- (1) 90575 – Scramble Up (6'-6" To 8'-0")
- (1) 4873 – Maze Panel 11" Gizmo (double sided)

1	RDU	GameTime - Primetime Play Unit, Ages 2-5 Custom: Accent 2: _____, Accent: _____, Basic: _____, Deck:Pvc: _____, Fabric 1: _____, Roto Plastic: _____, Uni Plastic: _____ <ul style="list-style-type: none"> • (2) 12023 – 3 1/2" Uprt Ass'Y Alum 8' • (2) 12024 – 3 1/2" Uprt Ass'Y Alum 9' • (2) 12025 – 3 1/2" Uprt Ass'Y Alum 10' • (1) 13540 – Crunch Bar • (2) 18200 – 36" Sq Punched Deck P/T 1.3125 • (1) 18692 – Single Thunder Ring • (1) 19094 – Schooner (2'-6" & 3') • (1) 19121 – Curved Zip Slide • (1) 19198 – 26" Bubble Panel • (1) 19223 – Sloped Funnel Climber • (1) 19287 – River Rock Climber • (1) 19363 – 3'-6"/4'-0" Zip Swerve Slide Right • (1) 19912 – Modern Transfer w/Barrier 2' Rise • (1) 19969 – 14' Sunblox Square Canopy • (4) G12026 – 3 1/2" Uprt Ass'Y Galv 11' 	\$17,091.50	\$17,091.50
1	RDU	GameTime - Primetime ADA Swing Set Custom: Basic: _____, Roto Plastic: _____ <ul style="list-style-type: none"> • (2) 5287 – Belt Seat for 8' Toprail • (1) 5293 – Enclosed Tot Seat for 8' Toprail • (1) 5320 – 8' ADA Primetime Swing Frame • (1) 5321 – 8' ADA Primetime Swing Add-A-Bay • (1) 5375 – Zero-G (2-5) Yellow 8' Height 	\$5,414.00	\$5,414.00
1	5058	GameTime - Arch Swing (Galv) Basic: _____, Roto Plastic: _____	\$7,880.00	\$7,880.00
1	6257	GameTime - Sensory Dome - Large Accent: _____, Basic: _____, Roto Plastic: _____	\$23,866.00	\$23,866.00
1	6372	GameTime - Spin With Me (With Handle) Accent: _____, Roto Plastic: _____	\$7,748.00	\$7,748.00
4	28009	GT-Site - 6' P/S Bench W/Back Inground Basic: _____, Coated Site: _____	\$1,130.00	\$4,520.00
1	39024I	GameTime - Bingo's Playhouse 2 Color HDPE: _____, 2 ColorHDPE2: _____, Basic: _____, HDPE: _____	\$9,904.00	\$9,904.00



QUOTE

106743-01-08 • 05/12/2026



1	91778	GameTime - SkyRun Zip Track 35 - Zip Seat Accent: _____, Basic: _____, Deck:Pvc: _____	\$18,730.00	\$18,730.00
1	6197	GameTime - Backhoe Digger Basic: _____	\$1,645.00	\$1,645.00
1	6198	GameTime - Backhoe Digger, Accessible Basic: _____	\$1,671.00	\$1,671.00
1	178749	GameTime - Owner's Kit	\$98.07	\$98.07
4	161292	GameTime - Wear Mat 36" x 36"	\$358.00	\$1,432.00
2	QRI433	GT-Shade - HYU101008IG HYPERBOLIC UMB 10X10X8 Basic: _____, Fabric 1: _____	\$4,720.00	\$9,440.00
1	EFW	Other - Engineered Wood Fiber Safety Surfacing* 400 CY 12" depth Includes geo-fabric Includes blow-in	\$21,437.30	\$21,437.30
1	PIP	Other - Poured-in-Place Safety Surfacing* 238SF 8ft CFH Includes security Includes disposal	\$16,370.00	\$16,370.00

Sub Total	\$228,716.37
Freight	\$19,329.54
Grand Total	\$248,045.91

Comments

Owner is responsible for accepting delivery and storage of play equipment
 Owner is responsible for removal of existing play equipment, safety surfacing, and drainage
 Owner is responsible for providing a flat and level area with less than 1% grade change

This quotation is subject to current MWP Recreation (MWP) policies as well as the following terms and conditions. Our quotation is based on shipment of all items at one time to a single destination, unless noted, and changes are subject to price adjustment. Purchases in excess of \$1,000.00 to be supported by your written purchase order made out to MWP Recreation.

Each quote is handled on a per order/project basis. Unless a long-term agreement is in place between purchaser and MWP, terms and conditions of this quotation shall be as outlined herein with no other requirements applicable.

Any changes made to product and/or services after initial order(s) has/have been received by MWP will result in production and/or schedule time frame modifications. Please contact your regional representative to receive a revised schedule for your order/project.



QUOTE

106743-01-08 • 05/12/2026



Indemnification; Owner/Owner's Representative will indemnify and hold Minnesota Playground, Inc., dba, MWP Recreation (MWP), harmless for all claims, damages and related costs, including reasonable legal fees and costs, arising out of Owner/Owner's Representative's negligence or noncompliance with any of its commitments under this document. MWP will indemnify and hold Owner/Owner's Representative harmless for all claims, damages and related costs, including reasonable legal fees and costs, arising out of MWP's negligence or noncompliance with any of its commitments under this document.

Excusable Delays/Additional Costs: MWP, and/or its affiliates, shall be liable for default unless delay of performance, whether supplying materials only or including installation in accordance with our project scope, is caused by an occurrence beyond reasonable control of MWP, and/or its affiliates, such as, but not limited to, acts of Superior Force or the public enemy, acts of Government in either its sovereign or contractual capacity, fire, floods, epidemics, quarantine restrictions, strikes, unusually severe weather, delays of common carriers (for transportation of goods whether raw materials or finished product), attainability of raw materials and severe tariffs. Such events resulting in additional costs are not included in quoted amounts and shall be the responsibility of the Owner/Owner's Representative. Any additional costs shall be provided in writing for purchaser's records and shall be due upon payment of invoice.

Pricing: f.o.b. factory, firm for 15 days from date of quotation. If placing an order after expiration of quote, please contact our office for updated pricing. A tax-exempt certificate is needed at time of order entry for all orders whether from tax-supported government agencies or not. Sales tax, if applicable, will be added at time of invoice unless a tax exempt certificate is provided at time of order entry.

Payment terms: net 30 days for tax supported governmental agencies. Should this quotation be forwarded to an agency not listed on this quote, credit terms, as well as other terms and conditions herein, may be need to be altered. For instance, non-tax supported organization purchasing any or all products and/or services quoted herein may require full payment for that amount due at time of order entry. Remaining balance owed by tax supported agency, if any, shall still be net 30 days. A 1.5% per month finance charge will be imposed on all past due accounts. Equipment shall be invoiced separately from other services and shall be payable in advance of those services and project completion. Retainage not accepted.

Unless already on file, please include a tax exempt certificate upon order entry whether a tax supported government agency or other.

GameTime Standard Product Shipment: order shall ship within six to eight weeks after GameTime's receipt and acceptance of your purchase order, color selections, approved submittals, if required, and receipt of deposit, if required. Receipt of anything other than what is stated herein will not constitute an order and therefore no materials will be placed into production nor installation, if required, will be scheduled.

EWF Shipment: order shall deliver within 14 - 21 days after our receipt and acceptance of your purchase order as well as schedule and weather allowing. Bulk material will ship via semi-truck/trailer with a live floor system in trailer which allows driver to deposit EWF directly onto a specific area provided proper access is available. If driver is asked to deposit EWF in certain area, driver has final say whether the site conditions allow proper access for the semi-truck/trailer. If MWP is installing EWF, bulk material will need to be deposited no farther than 30 yards from play area where surfacing is to be spread. If distance from deposited EWF to play area is greater than 30 yards, additional time/cost will be charged based on lack of site access. Additionally, this 30 yard route to install EWF must be free from any/all obstacles such as, but not limited to, landscaping, curbing, fencing, etc. Site restoration is not included and will be the responsibility of the owner/owner's representative. Road restrictions may be in effect and cause delays depending on time of year.

Freight charges: Prepaid & added



QUOTE

106743-01-08 • 05/12/2026



Exclusions: unless specifically included, this quotation excludes all site work and landscaping; removal of existing equipment; acceptance of equipment and off-loading; storage of goods prior to installation; equipment assembly and installation; safety surfacing; borders and drainage provisions.

Order Information:

Bill To: _____ Ship To: _____

Company: _____ Project Name: _____

Attn: _____ Attn: _____

Address: _____ Address: _____

City, State, Zip: _____ City, State, Zip: _____

Contact: _____ Contact: _____

Tel: _____ Tel: _____

Email: _____ Email: _____

Acceptance of quotation:

Accepted By (printed): _____ P.O. No: _____

Signature: _____ Date: _____

Title: _____ Phone: _____

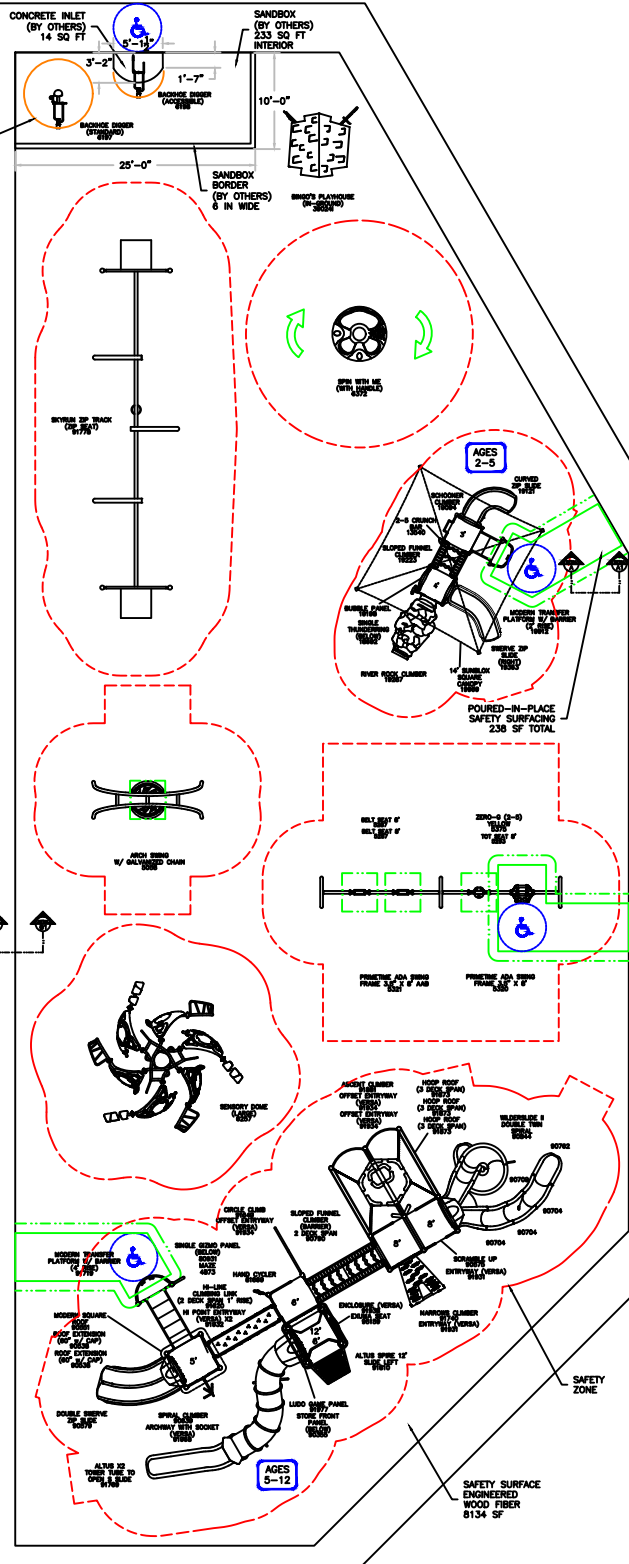
Facsimile: _____ Purchase Amount: **\$248,045.91**



Please Sign & Date the Final Top View:



TURNING RADIUS & REACH



While it is our intention to install your playground in a safe and timely manner, our success relies on your preparedness. Site preparation and grading to be performed by others and prior to installation. Slope within the play area(s) shall not exceed 1% to ensure a successful installation and a compliant playground. Drain tile systems other than within 4' of the perimeter along drain aggregate base material may require installing after the installation of the play equipment and must be coordinated with installation of safety surface materials. Failure to prepare site(s) to these expectations may result in additional charges if installer is required to re-mobilize. Please contact MN WI Playground if you have any questions.

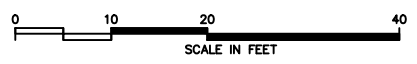
Maximum depth of safety surface and drain aggregate base should not exceed an 18" depth and shall not be installed until play equipment has been installed.

FOR INSTALLATION USE

SLIDE EXIT DISTANCE FROM EXIT TO FINISHED GRADE
 SLIDES WITH DECK HEIGHT OVER 4" = 15" TO 7"
 SLIDES 4" AND UNDER = 11" TO 0"
 TODDLER (INFANT) SLIDES = 6" TO 0"
 TRANSFER PLATFORMS = 18" MAX. TO 12" MIN.

ADA REQUIREMENTS FOR STRUCTURE AGES 5-12 YEARS OLD				AGES 2-5 YEARS OLD			
TOTAL NUMBER OF ELEVATED PLAY COMPONENTS	IN PLAN 12	REQ'D. 6	IN PLAN 6	REQ'D. 3			
TOTAL EVENTS ACCESSIBLE VIA TRANSFER	IN PLAN 11	REQ'D. 6	IN PLAN 6	REQ'D. 3			
TOTAL ACCESSIBLE EVENTS VIA RAMP	IN PLAN 0	REQ'D. 0	IN PLAN 0	REQ'D. 0			
TOTAL ACCESSIBLE GROUND LEVEL EVENTS	IN PLAN 10	REQ'D. 4	IN PLAN 4	REQ'D. 2			
DIFFERENT TYPES OF GROUND LEVEL EVENTS	IN PLAN 7	REQ'D. 3	IN PLAN 3	REQ'D. 2			

THIS PLAYGROUND MEETS ALL CURRENT ADA REQUIREMENTS & THE FINAL RULE ABOVE CHART/INFO IS APPLICABLE WHEN USING AN ACCESSIBLE SAFETY SURFACE



Mfg. By: **PLAYTIME COMPANY**
 Enriching Childhood Through Play.

Sold & Distributed By: **recreation**
 P.O. Box 27328, Golden Valley, MN 55427
 763-546-7787 1-800-622-5425
 Fax 763-546-5050
 E-Mail info@mwprecreation.com

Sunnyside Park - Option 2
 Rogers, MN
 05-11-26 DWG. D12925L2

Color Palette: Festive

- Uprights: Butterscotch
- Accent: Red
- 2-Color HDPE: Blue/White
- 2-Color HDPE 2: Red/White
- HDPE: Green
- Deck: Blue
- Roto Plastic: Green
- Rock Plastic: Deep Granite
- Metal Roof: Red
- Fabric: Navy Blue
- PIP: 50/50-Black/Bright Blue



SUNNYSIDE PARK - OPT. 2
Rogers, MN D12925L2



Images are a representation only.
Actual product may vary.



SUNNYSIDE PARK - OPT. 2

Rogers, MN D12925L2





SUNNYSIDE PARK - OPT. 2

Rogers, MN D12925L2





SUNNYSIDE PARK - OPT. 2
Rogers, MN D12925L2





SUNNYSIDE PARK - OPT. 2

Rogers, MN D12925L2





STAFF REPORT

**ROGERS PARKS AND
RECREATION ADVISORY
COMMISSION**

Meeting Date: May 14, 2026

Agenda Item: 6.2

Subject: Recommendation of Playground vendor for North Community Park

Prepared By: Mike Bauer, Parks & Recreation Director

Overview / Background / Analysis

At the February Parks and Recreation Advisory Commission meeting, the Commission reviewed three finalist proposals to replace the North Community Park playground. Each vendor presented their design concepts, followed by discussion, questions, and public input.

At that meeting, the Commission directed GameTime/MWP Recreation and Weber Recreation/Miracle Recreation to revise their concepts. Updated designs and cost proposals have been submitted and are linked below for review:

[GameTime/MWP Recreation Revised Proposal](#)

[Weber Recreation / Miracle Recreation Revised Proposal](#)

These revised submittals reflect adjustments requested at the February meeting, including modifications to play features, layout considerations, accessibility improvements, and budget alignment.

The revised concepts are now ready for Commission review. Staff is seeking Commission guidance on next steps, which may include:

- Selecting a preferred vendor
- Recommending additional revisions
- Or another Commission-determined course of action

Based on the Commission's feedback this evening, staff will proceed accordingly and prepare the appropriate materials for City Council consideration, if applicable.

Staff Recommendation

Financial Impact:

Source Fund: 404-Park Dedication

Budgeted? Yes

Supporting Documentation

- A. Weber Project Estimate
- B. Weber Site Plan
- C. Game Time Installation
- D. Weber Project Images PDF
- E. Game Time Equipment
- F. Game Time Site Plan
- G. NCP - COLOR OPTION 3_1 - Photo
- H. NCP - COLOR OPTION 3_2 - Photo
- I. NCP - COLOR OPTION 3_3 - Photo
- J. NCP - COLOR OPTION 3_4 - Photo
- K. NCP - COLOR OPTION 3_5 - Photo
- L. NCP - COLOR OPTION 3_6 - Photo
- M. NCP - COLOR OPTION 3_7 - Photo
- N. NCP - COLOR OPTION 3_8 - Photo
- O. NCP - COLOR OPTION 3_9 - Photo
- P. NCP - COLOR OPTION 3_10 - Photo



Miracle Recreation Equip. Co.
 878 E. US Hwy 60
 Monett, MO 65708
 1-888-458-2752

QUOTE: OE26006452
 CUSTOMER: 5503D10
 PROJECT: 25019271
 DESIGN NAME: Rogers -North
 Community Park Option 3

Prepared For:

JAY WEBBER

WEBBER RECREATIONAL DESGN, INC.
 1442 BROOKE COURT
 HASTINGS, MN 55033
 612-581-4704 Ext. (phone)

Project Name & Location:

Rogers - North Community Park

Attn: Rogers - North Community
 Park - Updated

Prepared by:

WEBBER RECREATIONAL DESIGN,
 INC.
 Madison Lokowich
 1442 BROOKE COURT
 HASTINGS, MN 55033
 651-438-3630 (phone)

Ship To Address:

Mike Bauer
 City of Rogers
 13750 Bittersweet Ln
 Rogers, MN 55374, US
 763-428-0974 (phone)

End User:

Mike Bauer
 City of Rogers
 13750 Bittersweet Ln
 Rogers, MN 55374, USA
 +17634280974 (phone)
 mbauer@rogersmn.gov

Quote Number: OE26006452
 Quote Date: 4/17/2026
 Valid For: 30 Days From Quote Date

2-5 Structure

Product line: KidsChoice
 Age group: 2-5_ASTM

Components

Part Number	Description	Qty
7145029	SQUARE DECK (ATTACHES TO 4 POSTS)	1.00
7145039	1/2 HEX FULL DECK (ATTACHES TO 4 POSTS)	2.00
7145493	5" OD X 112" POST (3' DK)	4.00
714555	5" OD X 76" POST FOR FENCING & PANELS	3.00
714572	5" OD X 144" POST FOR ROOF (3' DK OR LESS)	6.00
71460215	STEEL PANEL W/STEERING WHEEL	1.00
714631	CHUNKY TREKKER CLIMBER (FS)	1.00
714700	5' SIDE-BY-SIDE SLIDE,CANOPY (3' DK)	1.00
71471328B	COMMUNICATION PANEL (BELOW DECK)	1.00
71471520	INTERACTIVE PANEL FRAME	1.00
714715206	MAGICAL MUSIC INSERT	1.00
7147636	HEXS AND XS PANEL	1.00
714787	TOT ROCK CLIMBER (3' DK)	1.00
7148135	DECK ENCL FOR OVERHEAD CLIMBERS (ONLY)	1.00
71485139	SQ TRSFR POINT, CL HR (3' DK)	1.00

4/17/2026
 QUOTE: OE26006452

7148626	ROOF FOR HEXAGON DECK, PERF STEEL	1.00
7148626C	CUPOLA TOP W/PERF STEEL FOR 7148626 HEX ROOF	1.00
714920595	12' RAMP GRND-DK 1:12, W/O PST, OPN HR	1.00
7149599	ADA STAIRS BETWEEN DECKS W/2' RISE	1.00
714999Z	CUSTOMER SERVICE KIT (NO PRICE)	1.00

2-5 Freestanding

Product line: Freestanding
Age group: 2-12_ASTM

Components

Part Number	Description	Qty
2014	ACCELERATOR SWING	1.00
2740	SWG PART THERAPEUTIC SWG SEAT W/CHAIN (8' TR)	1.00
2740H	SWG PART HARNESS (8' TR)	1.00
2840	SWG PART SLASH PROOF SEAT W/CHAIN (8' TR)	2.00
2990	SWG PART TOT SEAT 360 DEG W/CHAIN (8' TR)	1.00
787001	WELCOME SIGN AGES 2-5, FREESTANDING	1.00
MR0881	MC TRUCK	1.00
MR0882	MC PLAYHOUSE	1.00
MR0931	5" ARCH SWING- (2 SEAT REQ'D)	1.00
MR0933	5" ARCH SWG- ADD-A-BAY (2 ST REQ'D)	1.00

5-12 Freestanding

Product line: Freestanding
Age group: 5-12_ASTM

Components

Part Number	Description	Qty
3064	CYCLO CONE PLUS CLIMBER	1.00
307	INCLUSIVE WHIRL (2023)	1.00
45410	AGILITY WALL	1.00
4543	CHAOS CLIMBER	1.00
6088	INCLUSIVE SEESAW	1.00
682	GLIDE ALONG STANDARD	1.00
787003	WELCOME SIGN AGES 5-12, FS	1.00
925920Z	TOUCH UP PAINT KIT - FREESTANDING (NO PRICE)	1.00
9451	SADDLE SEAT, ANGLED POST	1.00
9461	SURFER	1.00

4/17/2026

QUOTE: OE26006452

Page 2 of 5

5-12 Structure

Product line: KidsChoice

Age group: 5-12_ASTM

Components

Part Number	Description	Qty
7145129	PENTAGON DECK (ATTACHES TO 5 POSTS)	1.00
7145179	HEPTAGON DECK (ATTACHES TO 7 POSTS)	3.00
7145207	HEPTAGON MEGA TWR 3-LEVEL (2', 8' & 14' DKS)	1.00
714552	5" OD X 136" POST (3' TO 5' DKS)	6.00
714553	5" OD X 160" POST (5'6" TO 6'6" DKS)	1.00
714555	5" OD X 76" POST FOR FENCING & PANELS	3.00
714572	5" OD X 144" POST FOR ROOF (3' DK OR LESS)	14.00
		0
714573	5" OD X 168" POST FOR ROOF (3'6"-5' DK)	7.00
71460213B	STEEL COUNTER PANEL (BELOW DECK)	1.00
7146058	TREE-O CLIMBER (8' DK)	1.00
7146085	WAVY WEDGE WALL WALKER (5' DK)	1.00
7146193	POD HOPPER (3' DK)	1.00
7146449	VERSADECK W/ENCLOSURE 16" X 48"	1.00
71464515	ROLLER SLIDE (5' DK)	1.00
7146474	ALPHA CLIMBER (4' DECK)	1.00
7146708L	CHAMIII SPIRAL SLIDE LH (8' DK)	1.00
71468251	AVALANCHE INCL SLIDE W/MESH (5' DK)	1.00
71468610	ALTA GLIDE FLEX LINK TO KC (1' DK)	1.00
71469214	SHUTTLE CLIMBER	1.00
71469225	UPSTOP CLIMBER	1.00
7146933	HEX CLIMBER TO 3' DK	1.00
71471328B	COMMUNICATION PANEL (BELOW DECK)	1.00
71471520	INTERACTIVE PANEL FRAME	2.00
714715207	SLIDE & SOLVE INSERT	1.00
714715216	SOLAR EXPLORER INSERT	1.00
71471521B	FLOWER STAND PANEL (BELOW DECK)	1.00
71471522B	THRUWAY PANEL (BELOW DECK)	1.00
71472110	CANYON CLIMBER (10' DECK)	1.00
714736	BUNNY HILL SLIDE W/CANOPY (3' DK)	1.00
714742141	30" ID TUBE SLIDE STRAIGHT (14' DK)	1.00
71474214L	30" ID TUBE SLIDE LH (14' DK)	1.00
714811	HANDHOLD FOR TRANSFER DECK (1' OR 1'6" DK)	1.00
714812	12" RISER PLATE	1.00
7148135	DECK ENCL FOR OVERHEAD CLIMBERS (ONLY)	3.00
714816	WALL ENCLOSURE	7.00
7148174B	DOUBLE POD SEAT	1.00
7148302	UPPER ENCLOSURE FOR TUBE SLIDE	2.00
7148306	LEAN OUT ENCLOSURE	5.00
7148496	OBSERVATION DECK W/EXTENDED STEERING WHEEL	2.00
71485139	SQ TRSFR POINT, CL HR (3' DK)	1.00
7148627	ROOF FOR HEPTAGON DECK, PERF STEEL	4.00
7148627C	CUPOLA TOP W/PERF STEEL FOR 7148627 HEPT ROOF	4.00
714920595	12' RAMP GRND-DK 1:12, W/O PST, OPN HR	1.00
7149219	12' RAMP DECK TO DECK 1:12	4.00
714967	CURVED CLIMBER (3' & 4' DECK)	1.00
71499269	KIDS' PERCH W/WHEEL	1.00
71499269A	KIDS' PERCH W/EXTENDED WHEEL	1.00

4/17/2026

QUOTE: OE26006452

Page 3 of 5

Parts By Other

Part Number	Description	Total
Custom Miracle Nordic Theme	Custom Nordic Theme across both play systems	25,500.00
No Fault PIP	Poured in Place Rubber - 13,165 Sq Ft 50/50 Color for play areas with 1,400 Sq Ft of patterned Solid Colors for Splash Pad - w/ Sub-base	314,595.00
WaterPlay Splash Pad	Above ground low-flow misting features, install, concrete along with 18v kiosk, Potable Controller, 16 output expansion City is Responsible for low voltage electrical and water and sewer to site.	137,000.00

Totals:

Equipment Weight:	36,012.00 lbs
Equipment Price:	\$357,692.90
Products Subtotal:	\$357,692.90
Freight:	\$14,611.00 Code: 11671
Installation:	\$150,560.00
SubTotal:	\$522,863.90
Products by Other:	\$477,095.00
Grand Total:	\$999,958.90

Notes: All POs need to be made out to Webber Recreational Design, Inc.

This Quote shall not become a binding contract until signed and delivered by both Customer and Miracle Recreation Equipment Company ("Miracle"). Sales Representative is not authorized to sign this Quote on behalf of Miracle or Customer, and signed Quotes cannot be accepted from Sales Representative. To submit this offer, please sign below and forward a complete signed copy of this Quote directly to "Miracle Sales Administration" via fax (417) 235-3551 or email: orders@miraclerec.com. Upon acceptance, Miracle will return a fully-signed copy of the Quote to Customer (with copy to Sales Representative) via fax or email.

THIS QUOTE IS LIMITED TO AND GOVERNED BY THE TERMS CONTAINED HEREIN. Miracle objects to any other terms proposed by Customer, in writing or otherwise, as material alterations, and all such proposed terms shall be void. Customer authorizes Miracle to ship the Equipment and agrees to pay Miracle the total amount specified. Shipping terms are FOB the place of shipment via common carrier designated by Miracle. Payment terms are Net-30 days from invoice date with approved credit and all charges are due and payable in full at PO Box 734154, Dallas, TX 75373-4154, unless notified otherwise by Miracle in writing. Customer agrees to pay all additional service charges for past due invoices. Customer must provide proper tax exemption certificates to Miracle, and shall promptly pay and discharge all otherwise applicable taxes, license fees, levies and other impositions on the Equipment at its own expense. Purchase orders and payments should be made to the order of Miracle Recreation Equipment Company.

Quote Number: OE26006452 **Quote Date:** 4/17/2026 **Equipment:** \$501,847.00 **Grand Total:** \$999,958.90

CUSTOMER HEREBY SUBMITS ITS OFFER TO PURCHASE THE EQUIPMENT ACCORDING TO THE TERMS STATED IN THIS QUOTE AND SUBJECT TO FINAL APPROVAL BY MIRACLE.

Submitted By

Printed Name and Title

Date

4/17/2026

QUOTE: OE26006452

Page 4 of 5

THE FOREGOING QUOTE AND OFFER ARE HEREBY APPROVED AND ACCEPTED BY MIRACLE RECREATION EQUIPMENT

By:

Date:

ADDITIONAL TERMS & CONDITIONS OF SALE

1. Use & Maintenance. Customer agrees to regularly inspect and maintain the Equipment, and to provide, inspect and maintain appropriate safety surfacing under and around the Equipment, in accordance with Miracle's product literature and the most current Consumer Product Safety Commission Handbook for Public Playground Safety.

2. Default, Remedies & Delinquency Charges. Customer's failure to pay any invoice when due, or its failure to otherwise comply with the terms of this Quote, shall constitute a default under all unsatisfied invoices ("Event of Default"). Upon an Event of Default, Miracle shall have all remedies available to it at law or equity, including, without limitation, all remedies afforded a secured creditor under the Uniform Commercial Code. Customer agrees to assist and cooperate with Miracle to accomplish its filing and enforcement of mechanic's or other liens with respect to the Equipment or its location or its repossession of the Equipment, and Customer expressly waives all rights to possess the Equipment after an Event of Default. All remedies are cumulative and not alternative, and no exercise by Miracle of a remedy will prohibit or waive the exercise of any other remedy. Customer shall pay all reasonable attorneys fees plus any costs of collection incurred by Miracle in enforcing its rights hereunder. Subject to any limitations under law, Customer shall pay to Miracle as liquidated damages, and not as a penalty, an amount equal to 1.5% per month of any payment that is delinquent in such month and is not received by Miracle within ten (10) days after the date on which due.

3. Limitation of Warranty/ Indemnity. MIRACLE MAKES NO EQUIPMENT WARRANTIES EXCEPT FOR THOSE STANDARD WARRANTIES ISSUED WITH THE EQUIPMENT, WHICH ARE INCORPORATED HEREIN BY THIS REFERENCE. MIRACLE SPECIFICALLY DISCLAIMS ANY IMPLIED WARRANTY OF MERCHANTABILITY OR FITNESS FOR A PARTICULAR PURPOSE AND ANY LIABILITY FOR INCIDENTAL OR CONSEQUENTIAL DAMAGES. CUSTOMER AGREES TO DEFEND, INDEMNIFY AND SAVE MIRACLE HARMLESS FROM ALL CLAIMS OF ANY KIND FOR DAMAGES OF ANY KIND ARISING OUT OF CUSTOMERS ALTERATION OF THE EQUIPMENT, ITS FAILURE TO MAINTAIN THE EQUIPMENT, ITS FAILURE TO PROPERLY SUPERVISE EQUIPMENT USE, OR ITS FAILURE TO PROVIDE AND MAINTAIN APPROPRIATE TYPES AND DEPTHS OF SAFETY SURFACING BENEATH AND AROUND THE EQUIPMENT IN ACCORDANCE WITH MIRACLES INSTALLATION AND OWNERS MANUALS AND THE MOST CURRENT CONSUMER PRODUCT SAFETY COMMISSION HANDBOOK FOR PUBLIC PLAYGROUND SAFETY.

4. Restrictions. Until all amounts due hereunder are paid in full, Customer shall not: (i) permit the Equipment to be levied upon or attached under any legal process; (ii) transfer title to the Equipment or any of Customer's rights therein; or (iii) remove or permit the removal of the Equipment to any location not specified in this Quote.

5. Purchase Money Security Interest. Customer hereby grants, pledges and assigns to Miracle, and Miracle hereby reserves a purchase money security interest in, the Equipment in order to secure the payment and performance in full of all of Customer's obligations hereunder. Customer agrees that Miracle may file one or more financing statements, in order to allow it to perfect, acquire and maintain a superior security interest in the Equipment.

6. Choice of Law and Jurisdiction. All agreements between Customer and Miracle shall be interpreted, and the parties' obligations shall be governed, by the laws of the State of Missouri without reference to its choice of law provisions. Customer hereby consents to the personal jurisdiction of the state and federal courts located in the city and county of St. Louis, Missouri.

7. Title; Risk of Loss; Insurance. Miracle Retains full title to all Equipment until full payment is received by Miracle. Customer assumes all risk of loss or destruction of or damage to the Equipment by reason of theft, fire, water, or any other cause, and the occurrence of any such casualty shall not relieve the Customer from its obligations hereunder and under any invoices. Until all amounts due hereunder are paid in full, Customer shall insure the Equipment against all such losses and casualties.

8. Waiver; Invalidity. Miracle may waive a default hereunder, or under any invoice or other agreement between Customer and Miracle, or cure such a default at Customer's expense, but shall have no obligation to do either. No waiver shall be deemed to have taken place unless it is in writing, signed by Miracle. Any one waiver shall not constitute a waiver of other defaults or the same kind of default at another time, or a forfeiture of any rights provided to Miracle hereunder or under any invoice. The invalidity of any portion of this Quote shall not affect the force and effect of the remaining valid portions hereof.

9. Entire Agreement; Amendment; Binding Nature. This fully-executed Quote, as supplemented by Change Orders and invoices containing exact amounts of estimates provided herein, constitutes the complete and exclusive agreement between the parties. A Change Order is a written instrument signed by the Customer and Miracle stating their agreement as to any amendment in the terms of this Quote. Customer acknowledges that Change Orders may result in delays and additional costs. The parties agree that all Change Orders shall include appropriate adjustments in price and time frames relating to any requested amendments. Upon full execution, this Quote shall be binding upon and inure to the benefit of the parties and their successors and assigns.

10. Counterparts; Electronic Transmission. This Quote, any invoice, and any other agreement between the parties, may be executed in counterparts, each of which shall constitute an original. The facsimile or other electronic transmission of any signed original document and retransmission of any signed facsimile or other electronic transmission shall be the same as the transmission of an original. At the request of either party, the parties will confirm facsimile or other electronically transmitted signatures by signing an original document.

Rev E 021815

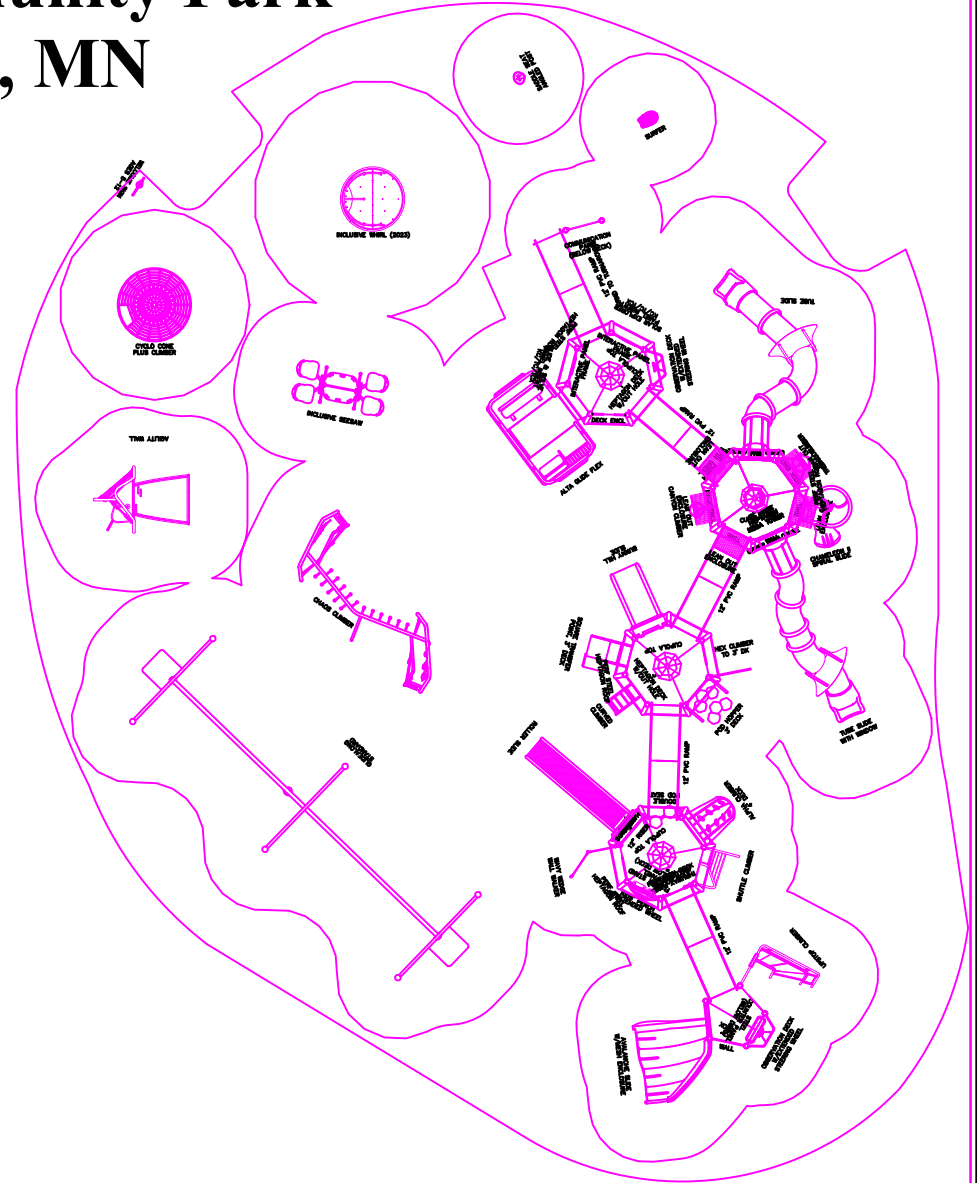
4/17/2026

QUOTE: OE26006452

Page 5 of 5



North Community Park Rogers, MN



North Community Park Rogers, MN	
13750 Bittersweet Lane Rogers, MN 55374	
GROUND SPACE	14,565 Sqft
PROTECTIVE AREA	
SCALE	

WEBBER RECREATIONAL DESIGN, INC.	
1442 Brooke Court Hastings, MN 55033	
PHONE NO.	(612) 581-4754
FAX NO.	(651) 438-3939
DRAWN BY	DATE
Nick Herman	04/17/2026



QUOTE

106748-01-07 • 05/12/2026



I-RFP North Community Park - Rogers, MN - D12928L2

Customer:

City of Rogers
22350 S. Diamond Lake Rd.
Rogers, MN 55374
United States

Ship to Zip: 55374

Prepared for:

Mike Bauer
Phone: 763-428-0974
mbauer@ci.rogers.mn.us

Prepared by:

MWP Recreation
4800 Olson Memorial Hwy, Suite 130
Golden Valley, Minnesota 55422
Ph. 800-622-5425 | 763-546-778 |
dan@MWPrecreation.com

**ACCOUNT
EXECUTIVE: DAN
LANES**

Quantity	Part #	Description	Unit Price	Amount
1	LUMP	Other - Installation of Drain Tile	\$18,300.80	\$18,300.80
1	INSTALL	Install - Installation of Play Equipment <ul style="list-style-type: none"> • Unpack Equipment • Layout/Dig Footing Holes • Assemble Playground Equipment/Water Play Equipment • Pour Concrete Footings/Pad • Dispose of Packing Materials 	\$99,823.31	\$99,823.31

Sub Total	\$118,124.11
Freight	\$4,500.00
Grand Total	\$122,624.11

Comments

Owner is responsible for removal of existing play equipment and safety surfacing
Owner is responsible for accepting delivery and storage of new play equipment
Owner is responsible for providing a flat and level area with less than 1% grade change
Owner is responsible for providing a water line up to water play equipment (hook-up will be done by MWP)



QUOTE

106748-01-07 • 05/12/2026



This quotation is subject to current MWP Recreation (MWP) policies as well as the following terms and conditions. Our quotation is based on shipment of all items at one time to a single destination, unless noted, and changes are subject to price adjustment. Purchases in excess of \$1,000.00 to be supported by your written purchase order made out to MWP Recreation.

Each quote is handled on a per order/project basis. Unless a long-term agreement is in place between purchaser and MWP, terms and conditions of this quotation shall be as outlined herein with no other requirements applicable.

Any changes made to product and/or services after initial order(s) has/have been received by MWP will result in production and/or schedule time frame modifications. Please contact your regional representative to receive a revised schedule for your order/project.

Indemnification; Owner/Owner's Representative will indemnify and hold Minnesota Playground, Inc., dba, MWP Recreation (MWP), harmless for all claims, damages and related costs, including reasonable legal fees and costs, arising out of Owner/Owner's Representative's negligence or noncompliance with any of its commitments under this document. MWP will indemnify and hold Owner/Owner's Representative harmless for all claims, damages and related costs, including reasonable legal fees and costs, arising out of MWP's negligence or noncompliance with any of its commitments under this document.

Excusable Delays/Additional Costs: MWP, and/or its affiliates, shall be liable for default unless delay of performance, whether supplying materials only or including installation in accordance with our project scope, is caused by an occurrence beyond reasonable control of MWP, and/or its affiliates, such as, but not limited to, acts of Superior Force or the public enemy, acts of Government in either its sovereign or contractual capacity, fire, floods, epidemics, quarantine restrictions, strikes, unusually severe weather, delays of common carriers (for transportation of goods whether raw materials or finished product), attainability of raw materials and severe tariffs. Such events resulting in additional costs are not included in quoted amounts and shall be the responsibility of the Owner/Owner's Representative. Any additional costs shall be provided in writing for purchaser's records and shall be due upon payment of invoice.

Pricing: f.o.b. factory, firm for 15 days from date of quotation. If placing an order after expiration of quote, please contact our office for updated pricing. A tax-exempt certificate is needed at time of order entry for all orders whether from tax-supported government agencies or not. Sales tax, if applicable, will be added at time of invoice unless a tax exempt certificate is provided at time of order entry.

Payment terms: net 30 days for tax supported governmental agencies. Should this quotation be forwarded to an agency not listed on this quote, credit terms, as well as other terms and conditions herein, may be need to be altered. For instance, non-tax supported organization purchasing any or all products and/or services quoted herein may require full payment for that amount due at time of order entry. Remaining balance owed by tax supported agency, if any, shall still be net 30 days. A 1.5% per month finance charge will be imposed on all past due accounts. Equipment shall be invoiced separately from other services and shall be payable in advance of those services and project completion. Retainage not accepted.

Unless already on file, please include a tax exempt certificate upon order entry whether a tax supported government agency or other.

Installation: shall be by a Certified GameTime Installer. Customer shall be responsible for scheduling coordination and site preparation. Site should be level and permit installation equipment access. Purchaser shall be responsible for unknown conditions such as buried utilities, tree stumps, bedrock or any concealed materials or conditions that may result in additional labor or material costs.



QUOTE

106748-01-07 • 05/12/2026



Project Scope:

Please note, installation is based on site being ready prior to our arrival to install play equipment as well as site conditions that have been conveyed to our organization by the owner/owner's representative and/or ideal conditions existing for a timely completion of your project as quoted. Unless addressed prior to the installation quote being issued or specifically mentioned herein, any issues that arise that impede the progress/completion of your project as quoted will result in additional charges.

Weather can change project scheduling in many ways. Take rain for an example. Day, or days, before rain... If weather forecasts show a high percentage chance for rain that will effect the site conditions, a postponement may be in order. Digging holes, laying certain surfacing materials, etc., are greatly affected by weather conditions and work may not begin/continue due to weather forecasts. There's the rain days themselves, which if heavy enough rainfall occurs, makes a site unworkable. Day, or days, after rain... Drying time will be needed after rain and the number of days needed will vary depending on amount of moisture received. One actual rain day may equal multiple delay days depending on work scheduled to be done.

+ INCLUSIONS +

- + One mobilization
- + Lull rental
- + Public utility locates only
- + Installation of equipment as outlined on Quote #106748-01-06
- + Marking and digging of footings holes to accept direct embedment supports as needed
- + Unpacking of play equipment
- + Assembly of play equipment
- + Concrete for footings as needed
- + Pouring of concrete for footings
- + Poured-in-place safety surfacing
- + Drain tile
- + Concrete pad for fitness area
- + Construction tape/temporary bracing (as needed)
- + Standard insurance offerings
- + Standard warranty offerings
- + Standard industry accepted labor wages
- + Disposal of packing material

- EXCLUSIONS -

- Clear access path up to and into play area for installation equipment (minimum of 8-foot wide, includes but not limited to gates, walkways, driveways, etc.)
- Staging area for materials and installation equipment, trailers, etc.
- Unobstructed space for maneuvering installation equipment as well as performing work
- Security fencing of any type
- On site security personnel
- If fencing is in place (by others), ability to unlock fencing is to be provided to our office a minimum of one week prior to our start
- Private utility locates such as, but not limited to, irrigation, fiber optics, private lighting, etc.
- Accepting, unloading and storage of order(s)/shipment(s) prior to installation. Please note, orders can be packaged/shipped in large crates, pallets, etc., requiring heavy-duty equipment to unload.
- Sitework of any kind such as, but not limited to, grading (play area to have max slope of 1%), site restoration, drainage, etc.
- Removal of existing play equipment, border, safety surfacing, etc.
- Backfill and compaction of backfill after removal of existing items (for footing holes as an example) that leave voids in area (marking and digging of new footing holes based on workable site)
- Digging in compacted sub-surfaces, rock, hard pan, tree roots, unstable soil conditions, etc.
- Restoration of compacted sub-surfaces for playground surfacings such as, but not limited to, poured-in-place rubber, rubber tiles, artificial turf, etc.
- Digging/maneuvering in sand, pea gravel, mud, etc.
- Offsite removal of spoils from footing holes (can be stockpiled near play area for owner/owner's representative removal or spread within play area)
- Border to help contain playground safety surfacing
- Removal of temporary braces, caution/construction tape, etc. (Can be removed and disposed of after concrete has cured.)
- Bonding of any type
- Permits of any kind

QUOTE

106748-01-07 • 05/12/2026



- Prevailing, Davis Bacon, Union, or similar, wages
- Restroom facilities. Please provide access to restrooms whether within a building or portable style. Should use of site facilities not be available, additional charges will be required to bring on site temporary/portable restrooms. These temporary facilities will be removed once your project has been completed.
- Short term maintenance, check manufacturer's owner's manual recommendations for maintenance and always follow these written instructions. To help set up short (and ongoing) term maintenance, use the first twelve months to regularly check equipment (such as, but not limited to, tightening hardware, checking moving features, etc.). Twelve months allows use in all seasons and will provide a better understanding of what will be necessary for your ongoing maintenance. This short term schedule will be based on the amount of use the play equipment is getting as well as the type of play event that is being played on. Activities with movement have a more dynamic play which can lead to more maintenance due to the nature of the motion but also because these types of play events tend to be more popular. Static features may require less attention during the short term and ongoing maintenance as inspections will determine frequency of maintenance needed for these events. There may be a need for scheduled lower and higher frequency inspections.
- Ongoing maintenance, check manufacturer's owner's manual recommendations for maintenance and always follow these written instructions. After short term maintenance period is done and data is collected for that time period, an ongoing schedule should be implemented. The ongoing maintenance can change with age and greater use. There may be a need for scheduled lower and higher frequency inspections.

Should weekend work be necessary or non-standard hours be worked, please provide a site contact and the best telephone number to reach this person in case an urgent matter arises requiring immediate attention.

(Name) _____

(Cell) _____

(Other Telephone Number) _____



QUOTE

106748-01-07 • 05/12/2026



Poured-In-Place Surfacing:

1. See product specifications for specific detailed product information, installation information, compliance documentation, and appropriate certifications. Standard warranty included unless otherwise noted.
2. Quote is based on the information provided and is subject to change based on final installation unless indicated otherwise, in writing. Any changes or additions to this proposal, to include materials, will affect pricing.
3. Sub-base provided by others is the responsibility of the owner and/or others. The substrate must meet & specifications including drainage and grade requirements. There is no demolition or site-work included in the scope of this quote unless otherwise noted above.
4. Site access must be a minimum of 25' for trucks and mixer, with no stairs. Irrigation, sprinkler, and/or water systems must be shut off 24 hours before install and remain off until 24 hours after installation is complete.
5. Additional charges for downtime/stand-by may be assessed in the event that installation is delayed due to the site not being ready as scheduled or if installation is interrupted for reasons other than those related to weather or general public emergencies.
6. Security and waste removal during install and upon completion is the responsibility of the owner, unless specified otherwise in Project Scope.
7. Installations scheduled after 6 months of proposal acceptance may be subject to price adjustments.
8. Normal lead time is 4 weeks from order date. However, scheduling and crew deployment is subject to local weather conditions including temperature and precipitation constraints. See appropriate specification for temperature and precipitation constraints.
9. The scope of this quote does not include on-site fall attenuation testing. We do have independent laboratory testing available upon request.
10. We are not responsible for the reviewing and interpreting of contracts unless approved by Director of Surfacing or otherwise noted in the Project Scope.

Installation Exclusions, unless otherwise noted herein; Permits/Licensing, State or Federal (Davis Bacon) Wages, Demolition, Builders Risk Insurance, Union Fees (PLA/PSA Contracts), Drainage, Additionally Insured, Engineering, Waste/Dumpsters, OCIP, Fall Height/Attenuation Testing, Rooftop Installations, Waiver of Subrogation, Fencing/Security, Extended Warranty, Bonding, Excavation and Site Work/Preparation, Site Restoration.

The following is a non-inclusive list of items that may result in additional charges (Change Order) where work cannot commence until Change Order(s) are fully executed.

- Sub Base not to installation standards
- Installation of Play Equipment not complete, resulting in return trip
- Poor Site Access not identified in Proposal or Project Scope
- Customer requirement/request for work on weekends, holidays, or overtime
- Any and all scope variations not agreed upon in writing
- Security that was not included in the base quote
- Waste Removal that was not included in the base quote

Wet Site Conditions: installation areas located near wetlands, where a high water table exists or in any environment that produces excessive moisture will require additional planning prior to installation of your project. Unless excessively wet conditions have been conveyed prior to installation quote and accounted for in some manner, your installation will not proceed. Ideal dry conditions need to be present to begin, and complete, your project as quoted.

Exclusions: unless specifically included, this quotation excludes all site work and landscaping; removal of existing equipment; acceptance of equipment and off-loading; storage of goods prior to installation; equipment assembly and installation; safety surfacing; borders and drainage provisions.

QUOTE

106748-01-07 • 05/12/2026



Order Information:

Bill To: _____ Ship To: _____
Company: _____ Project Name: _____
Attn: _____ Attn: _____
Address: _____ Address: _____
City, State, Zip: _____ City, State, Zip: _____
Contact: _____ Contact: _____
Tel: _____ Tel: _____
Email: _____ Email: _____

Acceptance of quotation:

Accepted By (printed): _____ P.O. No: _____
Signature: _____ Date: _____
Title: _____ Phone: _____
Facsimile: _____ Purchase Amount: **\$122,624.11**







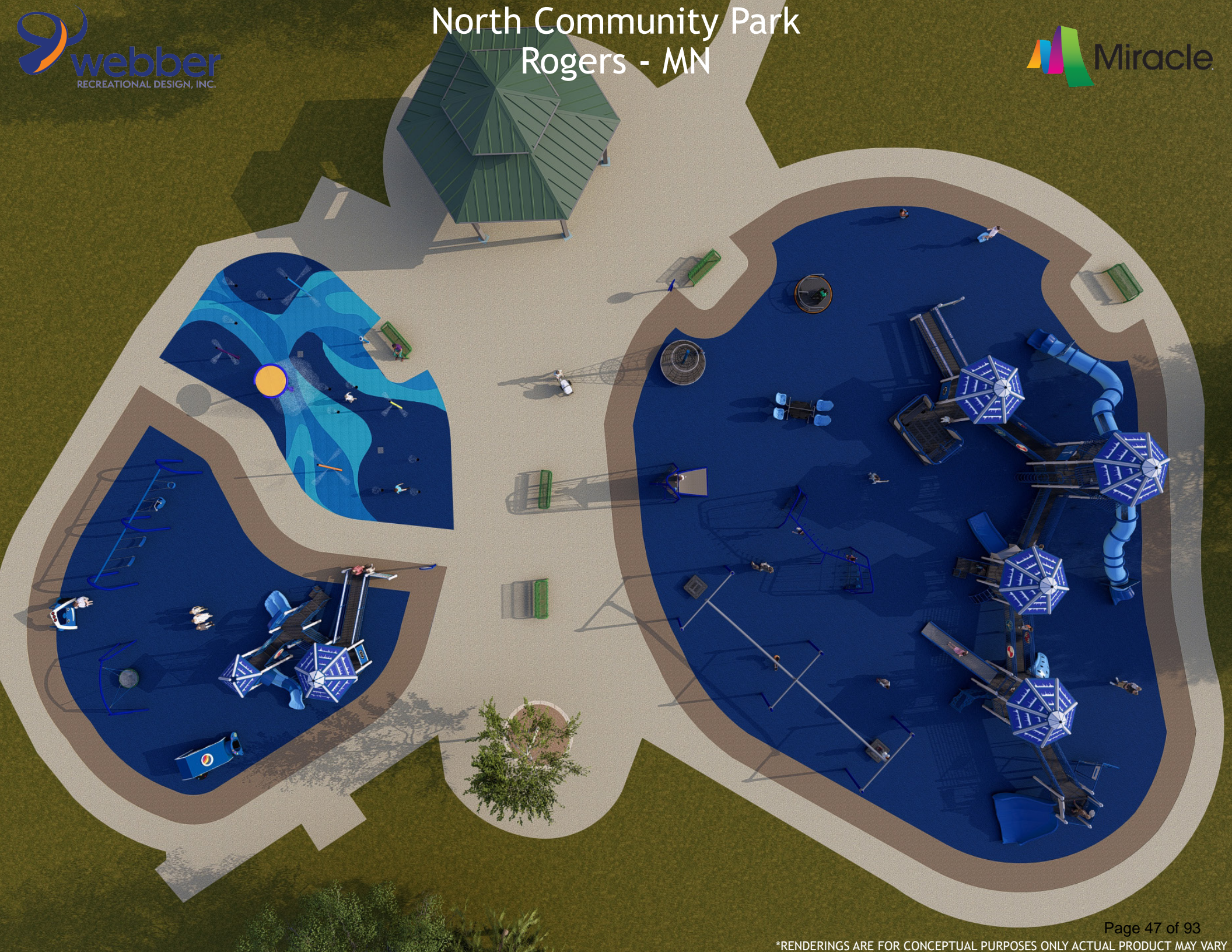












QUOTE

106748-01-06 • 05/12/2026



M-RFP North Community Park - Rogers, MN - D12928L2

Customer:

City of Rogers
22350 S. Diamond Lake Rd.
Rogers, MN 55374
United States

Ship to Zip: 55374

Prepared for:

Mike Bauer
Phone: 763-428-0974
mbauer@ci.rogers.mn.us

Prepared by:

MWP Recreation
4800 Olson Memorial Hwy, Suite 130
Golden Valley, Minnesota 55422
Ph. 800-622-5425 | 763-546-778 |
dan@MWPrecreation.com

**ACCOUNT
EXECUTIVE: DAN
LANES**

Quantity	Part #	Description	Unit Price	Amount
-----Ages 2-5-----				
1	RDU	GameTime - Powerscape ADA Ramped Play Unit, Ages 2-5 <i>Custom: 2 Color HDPE: _____, Accent: _____, Basic: _____,</i> <i>Deck:Pvc: _____, Fabric 1: _____, HDPE: _____, Roto Plastic:</i> <i>_____, Tube: _____</i> <ul style="list-style-type: none"> • (1) 16465 – Slide Transfer (Ada) • (4) 26094 – Triangular Shroud • (1) 36000 – Bubble Climbing Wall • (1) 36003 – Ladder Climbing Wall • (1) 36014 – Arched Chain Net Link • (1) 36023 – 3 Way X-Pod Step • (1) 36030 – Single Link Cross Beam Powerscape Plus • (3) 39012 – Tot'S Leaf • (1) 80082 – Slide Transfer • (3) 80612 – Deck Curb • (2) 80689 – Handhold Package • (2) 81680 – Single Seat • (2) 90005 – Two Piece Hex Deck, Ada Ramp Access • (1) 90186 – Ashiko & Djembe Panel • (1) 90188 – Calabazo Panel • (1) 90189 – Ganza Panel • (1) 90190 – Udu Panel • (2) 90264 – 6' Upright, Alum • (5) 90265 – 7' Upright, Alum • (5) 90266 – 8' Upright, Alum • (2) 90267 – 9' Upright, Alum • (1) 90288 – 2' Straight Tube Slide, 30" Dia • (1) 91024 – Drivers Panel Above Deck • (1) 91557 – 6' Ramp Attachment (Barrier) • (1) 91558 – 6' Ramp Link (Barrier) 	\$49,513.08	\$49,513.08



QUOTE

106748-01-06 • 05/12/2026



- (1) 91580 – Animal Race Half Panel
- (2) 91599 – HDPE Vertical Ladder 1'6"
- (1) 91608 – 15' Sunblox Umbrella Canopy
- (1) 91698 – Preschool Horizontal Ladder
- (1) 91721 – Wayfinder Sign - Climb
- (3) 91725 – Wayfinder Sign - Ramp
- (1) 91900 – 2'-6" Zip Slide
- (3) 91931 – Entryway (Versa)
- (4) G90262 – 4' Upright, Galv
- (2) G90266 – 8' Upright, Galv
- (1) G90267 – 9' Upright, Galv
- (1) G90270 – 12' Upright, Galv

1	RDU	GameTime - Primetime ADA Swing Set, Ages 2-5 Custom: Basic: _____, Roto Plastic: _____ <ul style="list-style-type: none"> • (1) 5320 – 8' ADA Primetime Swing Frame • (1) 5317 – 8' Primetime Swing Add-A-Bay • (2) 5293 – Enclosed Tot Seat for 8' Toprail • (1) 5295 – Expression Swing 8' Toprail Height • (1) 5377 – Zero-G (2-5) Beige 8' Height 	\$7,253.00	\$7,253.00
1	3206	GameTime - FS Sensory Wave Arch System Roto Plastic: _____	\$7,482.00	\$7,482.00
1	3904	GameTime - Bells 20" 1S	\$1,345.00	\$1,345.00
1	3928	GameTime - Fun Mirror 12" 1S	\$405.00	\$405.00
1	3942	GameTime - Hourglass 12" 2S	\$1,471.00	\$1,471.00
1	5032	GameTime - 2-5 Age Appropriate Fiberglass Sign Basic: _____	\$2,084.00	\$2,084.00
1	6258	GameTime - Sensory Cove Climber - Triangle Basic: _____, Roof: _____, Roof 2: _____	\$3,698.00	\$3,698.00
1	6375	GameTime - Communication Board Accent: _____	\$2,887.00	\$2,887.00
1	6376	GameTime - Duo Spinner Basic: _____, Roto Plastic: _____	\$2,930.00	\$2,930.00

-----Ages 5-12-----

1	RDU	GameTime - Powerscape ADA Ramped Play Unit, Ages 5-12 Custom: 2 Color HDPE: _____, Accent 2: _____, Accent: _____, Arch: _____, Basic: _____, Cabling: _____, Deck:Pvc: _____, Fabric 1: _____, HDPE: _____, Metal Roof: _____, Roto Plastic: _____, Tube: _____, Roto Plastic: _____, RotoPlastic2: _____ <ul style="list-style-type: none"> • (1) 564 – Curved Balance Beam • (1) 4962 – Echo Chamber • (4) 6232 – Pod (1'-0") • (1) 16465 – Slide Transfer (Ada) • (1) 16700 – Ada49"Sq Punch Steel Deck • (1) 16701 – Ada 49"Tri Punch Steel Dk • (1) 16712 – Grade-1'-0"Deck Ramp 	\$179,885.88	\$179,885.88
---	-----	--	--------------	--------------



QUOTE

106748-01-06 • 05/12/2026



- (3) 16717 – 147" Ada Ramp Link
- (1) 6863RP – Arise Climber
- (1) 6867RP – Aventus Tower 12' Slide
- (1) 6869RP – Arise Climber w/Cover
- (1) 6870RP – Inclusive Play Pocket (Tower)
- (6) 6880RP – Aventus Talk Tube
- (1) 7294RP – Aventus Tower
- (2) 7295RP – Aventus Tw Steel Panel Med
- (1) 7296RP – Aventus Tw Steel Panel Sm
- (1) 7297RP – Aventus Internal Climber-Steel
- (4) 80001 – 49"Tri Punched Steel Deck
- (1) 80082 – Slide Transfer
- (2) 80612 – Deck Curb
- (2) 80689 – Handhold Package
- (1) 81483 – 90 Deg Loop Ladder Link
- (1) 81680 – Single Seat
- (1) 81688 – Therapeutic Rings Attch
- (1) 81699 – Bongos
- (4) 90005 – Two Piece Hex Deck, Ada Ramp Access
- (1) 90105 – 3'-6"/4' Schooner Climber
- (1) 90135 – 4'/4'-6" Twister Climber
- (2) 90264 – 6' Upright, Alum
- (7) 90265 – 7' Upright, Alum
- (5) 90266 – 8' Upright, Alum
- (4) 90267 – 9' Upright, Alum
- (7) 90268 – 10' Upright, Alum
- (1) 90269 – 11' Upright, Alum
- (3) 90273 – 15' Upright, Alum
- (1) 90344 – 2' & 2'-6" Clover Leaf Climber
- (1) 90388 – 1'-6" Overhead Climber Access Ladder
- (1) 90430 – Decorative Panel W/Gizmo, Above Dk
- (1) 90578 – Swerve Slide
- (1) 90637 – Tunnel Up
- (1) 90842 – Single Spiral
- (1) 90864 – ADA Overhead
- (1) 91377 – PS S Wave Up & On LNK (3'-3'6)
- (2) 91457 – Sensory Wave Entryway
- (1) 91563 – Flower Spinner Half Panel
- (1) 91580 – Animal Race Half Panel
- (1) 91587 – Braille Panel
- (2) 91599 – HDPE Vertical Ladder 1'6"
- (1) 91604 – HDPE Vertical Ladder 4'0"
- (1) 91607 – Door Way Panel with Buttercups
- (1) 91688 – Inclined Climber (3')
- (5) 91721 – Wayfinder Sign - Climb
- (3) 91722 – Wayfinder Sign - Slide
- (2) 91723 – Wayfinder Sign - Ste[
- (4) 91725 – Wayfinder Sign - Ramp
- (1) 91728 – Rock with Me
- (1) 91797 – 20' Sunblox Square Canopy
- (1) 91827 – 5" Upright Extension w/ Cap 5'
- (5) 91832 – 5" Upright Extension w/o Cap 8'
- (1) 91846 – 5" Upright Extension w/o Cap 7'

QUOTE

106748-01-06 • 05/12/2026



- (1) 91847 – Modern Access Attach CrawlTubes
- (1) 91883 – Entry Way (Aventus)
- (4) 91931 – Entryway (Versa)
- (1) 91934 – Offset Entryway (Versa)
- (1) 91968 – Archway with Socket (Versa)
- (1) 91971 – Battle Sliders Game Panel
- (1) 95148 – 3'-6" Straight Wilderslide w/Every
- (1) 203858 – Single Zip Slide Hood
- (1) 205960 – Single Entrance Section
- (1) 223226 – Slide Footbuck Mounting Plate C/O
- (1) 223226 – Slide Footbuck Mounting Plate C/O
- (1) 223696 – Rotomold Slide Transfer
- (1) 224589 – Slide Footbuck Tube 30 5/8" C/O
- (1) 224589 – Slide Footbuck Tube 30 5/8" C/O
- (1) 224954 – Straight Section
- (1) 224954 – Straight Section
- (1) 225419 – Hardware Complete for 18938/95148
- (1) 95179 – Barrier Enclosure (Versa)
- (4) G90262 – 4' Upright, Galv
- (2) G90268 – 10' Upright, Galv
- (8) G90269 – 11' Upright, Galv
- (5) G90271 – 13' Upright, Galv
- (2) G90273 – 15' Upright, Galv

1	RDU	GameTime - Primetime ADA Swing Set, Ages 5-12 Custom: Basic: _____, Roto Plastic: _____ <ul style="list-style-type: none"> • (4) 5287 – Belt Seat for 8' Toprail • (1) 5299 – Expression Swing w/Adaptive Seat • (2) 5317 – 8' Primetime Swing Add-A-Bay • (1) 5320 – 8' ADA Primetime Swing Frame • (1) 5378 – Zero-G (5-12) Beige 8' Height 	\$9,467.00	\$9,467.00
1	5033	GameTime - 5-12 Age Appropriate Fiberglass Sign Basic: _____	\$2,084.00	\$2,084.00
1	5960SP	GameTime - VistaTree Top 3 Accent: _____, Accent 2: _____, Basic: _____, Netting: _____	\$22,801.00	\$22,801.00
1	6299	GameTime - Inclusive Seesaw 2 Color HDPE: _____, Accent: _____	\$10,260.00	\$10,260.00
1	6383	GameTime - Mini Inclusive Whirl Basic: _____, HDPE: _____	\$12,775.00	\$12,775.00
1	91863	GameTime - SkyRun Zip Track 50ft Zero G & Zip Dbl Accent: _____, Basic: _____, Deck:Pvc: _____, Roto Plastic: _____	\$41,866.00	\$41,866.00
-----Adult Fitness-----				
1	13558S	GameTime - Shoulder Rotator (Surface Mount) Basic: _____	\$5,082.00	\$5,082.00
1	13566S	GameTime - Roman Chair Squat Basic: _____	\$2,652.00	\$2,652.00



QUOTE

106748-01-06 • 05/12/2026



1	13589S	GameTime - Push Up Hi/Lo Surface Mt Accent: _____, Basic: _____	\$5,490.00	\$5,490.00
2	14927	GameTime - NDS Play On Sign Package		
2	14928	GameTime - NDS Inclusive Play Sign Package		
6	28010	GT-Site - 6' P/S Bench W/Back S/M Basic: _____, Coated Site: _____	\$1,198.00	\$7,188.00
1	178749	GameTime - Owner's Kit	\$98.07	\$98.07
-----Waterplay Equipment-----				
1	W050-4	Water Odyssey/The Fountain People - Cool Stick 4: 1-000482-002 Embed	\$4,088.75	\$4,088.75
1	W050-5	Water Odyssey/The Fountain People - Cool Stick 5: 1-000482-002 Embed	\$4,400.94	\$4,400.94
1	W050-6	Water Odyssey/The Fountain People - Cool Stick 6: 1-000482-002 Embed	\$4,714.06	\$4,714.06
-----Surfacing-----				
1	PIP	Other - Poured-in-place Safety Surfacing 14,603 SF Varied fall heights Includes security Includes disposal Includes pattern with multiple colors	\$335,370.00	\$335,370.00
1	CONC	Other - Concrete Pad for Fitness Area 1400 SF	\$78,750.00	\$78,750.00
			Sub Total	\$806,040.78
			Freight	\$42,842.52
			Grand Total	\$848,883.30

Comments

Owner is responsible for removal of existing play equipment and safety surfacing
 Owner is responsible for accepting delivery and storage of new play equipment
 Owner is responsible for providing a flat and level area with less than 1% grade change
 Owner is responsible for providing a water line up to water play equipment (hook-up will be done by MWP)



QUOTE

106748-01-06 • 05/12/2026



This quotation is subject to current MWP Recreation (MWP) policies as well as the following terms and conditions. Our quotation is based on shipment of all items at one time to a single destination, unless noted, and changes are subject to price adjustment. Purchases in excess of \$1,000.00 to be supported by your written purchase order made out to MWP Recreation.

Each quote is handled on a per order/project basis. Unless a long-term agreement is in place between purchaser and MWP, terms and conditions of this quotation shall be as outlined herein with no other requirements applicable.

Any changes made to product and/or services after initial order(s) has/have been received by MWP will result in production and/or schedule time frame modifications. Please contact your regional representative to receive a revised schedule for your order/project.

Indemnification; Owner/Owner's Representative will indemnify and hold Minnesota Playground, Inc., dba, MWP Recreation (MWP), harmless for all claims, damages and related costs, including reasonable legal fees and costs, arising out of Owner/Owner's Representative's negligence or noncompliance with any of its commitments under this document. MWP will indemnify and hold Owner/Owner's Representative harmless for all claims, damages and related costs, including reasonable legal fees and costs, arising out of MWP's negligence or noncompliance with any of its commitments under this document.

Excusable Delays/Additional Costs: MWP, and/or its affiliates, shall be liable for default unless delay of performance, whether supplying materials only or including installation in accordance with our project scope, is caused by an occurrence beyond reasonable control of MWP, and/or its affiliates, such as, but not limited to, acts of Superior Force or the public enemy, acts of Government in either its sovereign or contractual capacity, fire, floods, epidemics, quarantine restrictions, strikes, unusually severe weather, delays of common carriers (for transportation of goods whether raw materials or finished product), attainability of raw materials and severe tariffs. Such events resulting in additional costs are not included in quoted amounts and shall be the responsibility of the Owner/Owner's Representative. Any additional costs shall be provided in writing for purchaser's records and shall be due upon payment of invoice.

Pricing: f.o.b. factory, firm for 15 days from date of quotation. If placing an order after expiration of quote, please contact our office for updated pricing. A tax-exempt certificate is needed at time of order entry for all orders whether from tax-supported government agencies or not. Sales tax, if applicable, will be added at time of invoice unless a tax exempt certificate is provided at time of order entry.

Payment terms: net 30 days for tax supported governmental agencies. Should this quotation be forwarded to an agency not listed on this quote, credit terms, as well as other terms and conditions herein, may be need to be altered. For instance, non-tax supported organization purchasing any or all products and/or services quoted herein may require full payment for that amount due at time of order entry. Remaining balance owed by tax supported agency, if any, shall still be net 30 days. A 1.5% per month finance charge will be imposed on all past due accounts. Equipment shall be invoiced separately from other services and shall be payable in advance of those services and project completion. Retainage not accepted.

Unless already on file, please include a tax exempt certificate upon order entry whether a tax supported government agency or other.

GameTime Standard Product Shipment: order shall ship within six to eight weeks after GameTime's receipt and acceptance of your purchase order, color selections, approved submittals, if required, and receipt of deposit, if required. Receipt of anything other than what is stated herein will not constitute an order and therefore no materials will be placed into production nor installation, if required, will be scheduled.

GameTime VistaRope Products Shipment: order shall ship within fourteen to eighteen weeks after GameTime's receipt and acceptance of your purchase order, color selections, approved submittals, and receipt of deposit/full payment, if required. Receipt of anything other than what is stated herein will not constitute an order and therefore no materials will be placed into production nor installation, if required, will be scheduled.



QUOTE

106748-01-06 • 05/12/2026



GameTime Landmark/Custom Product Shipment: order shall ship within fourteen to eighteen weeks after GameTime's receipt and acceptance of your purchase order, color selections, approved submittals, and receipt of deposit, if required. Receipt of anything other than what is stated herein will not constitute an order and therefore no materials will be placed into production nor installation, if required, will be scheduled.

Freight charges: Prepaid & added

Poured-In-Place Surfacing:

1. See product specifications for specific detailed product information, installation information, compliance documentation, and appropriate certifications. Standard warranty included unless otherwise noted.
2. Quote is based on the information provided and is subject to change based on final installation unless indicated otherwise, in writing. Any changes or additions to this proposal, to include materials, will affect pricing.
3. Sub-base provided by others is the responsibility of the owner and/or others. The substrate must meet & specifications including drainage and grade requirements. There is no demolition or site-work included in the scope of this quote unless otherwise noted above.
4. Site access must be a minimum of 25' for trucks and mixer, with no stairs. Irrigation, sprinkler, and/or water systems must be shut off 24 hours before install and remain off until 24 hours after installation is complete.
5. Additional charges for downtime/stand-by may be assessed in the event that installation is delayed due to the site not being ready as scheduled or if installation is interrupted for reasons other than those related to weather or general public emergencies.
6. Security and waste removal during install and upon completion is the responsibility of the owner, unless specified otherwise in Project Scope.
7. Installations scheduled after 6 months of proposal acceptance may be subject to price adjustments.
8. Normal lead time is 4 weeks from order date. However, scheduling and crew deployment is subject to local weather conditions including temperature and precipitation constraints. See appropriate specification for temperature and precipitation constraints.
9. The scope of this quote does not include on-site fall attenuation testing. We do have independent laboratory testing available upon request.
10. We are not responsible for the reviewing and interpreting of contracts unless approved by Director of Surfacing or otherwise noted in the Project Scope.

Installation Exclusions, unless otherwise noted herein; Permits/Licensing, State or Federal (Davis Bacon) Wages, Demolition, Builders Risk Insurance, Union Fees (PLA/PSA Contracts), Drainage, Additionally Insured, Engineering, Waste/Dumpsters, OCIP, Fall Height/Attenuation Testing, Rooftop Installations, Waiver of Subrogation, Fencing/Security, Extended Warranty, Bonding, Excavation and Site Work/Preparation, Site Restoration.

The following is a non-inclusive list of items that may result in additional charges (Change Order) where work cannot commence until Change Order(s) are fully executed.

- Sub Base not to installation standards
- Installation of Play Equipment not complete, resulting in return trip
- Poor Site Access not identified in Proposal or Project Scope
- Customer requirement/request for work on weekends, holidays, or overtime
- Any and all scope variations not agreed upon in writing
- Security that was not included in the base quote
- Waste Removal that was not included in the base quote

Wet Site Conditions: installation areas located near wetlands, where a high water table exists or in any environment that produces excessive moisture will require additional planning prior to installation of your project. Unless excessively wet conditions have been conveyed prior to installation quote and accounted for in some manner, your installation will not proceed. Ideal dry conditions need to be present to begin, and complete, your project as quoted.

Exclusions: unless specifically included, this quotation excludes all site work and landscaping; removal of existing equipment; acceptance of equipment and off-loading; storage of goods prior to installation; equipment assembly and installation; safety surfacing; borders and drainage provisions.

QUOTE

106748-01-06 • 05/12/2026



Order Information:

Bill To: _____ Ship To: _____

Company: _____ Project Name: _____

Attn: _____ Attn: _____

Address: _____ Address: _____

City, State, Zip: _____ City, State, Zip: _____

Contact: _____ Contact: _____

Tel: _____ Tel: _____

Email: _____ Email: _____

Acceptance of quotation:

Accepted By (printed): _____ P.O. No: _____

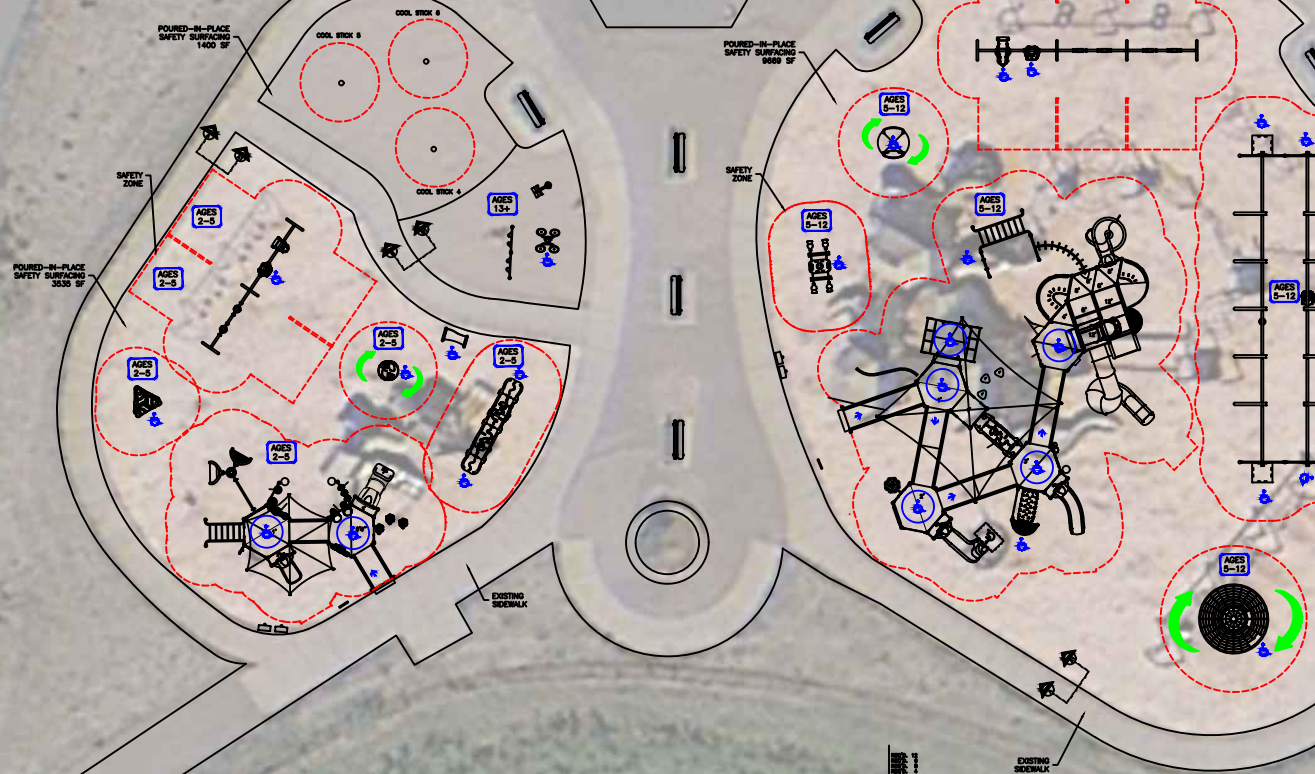
Signature: _____ Date: _____

Title: _____ Phone: _____

Facsimile: _____ Purchase Amount: **\$848,883.30**



Please Sign & Date the Final Top View:



SCALE: 1" = 30'-0"

THIS PRINT IS THE PROPERTY OF MINNESOTA WISCONSIN PLAYGROUND INC. AND IS NOT TO BE USED, COPIED OR REPRODUCED WITHOUT THEIR EXPRESSED WRITTEN PERMISSION.

Mfg. By:



Sold & Distributed By:



P.O. Box 27328, Golden Valley, MN 55427
 763-546-7787 1-800-622-5425
 Fax 763-546-5050
 E-Mail info@mwprecreation.com

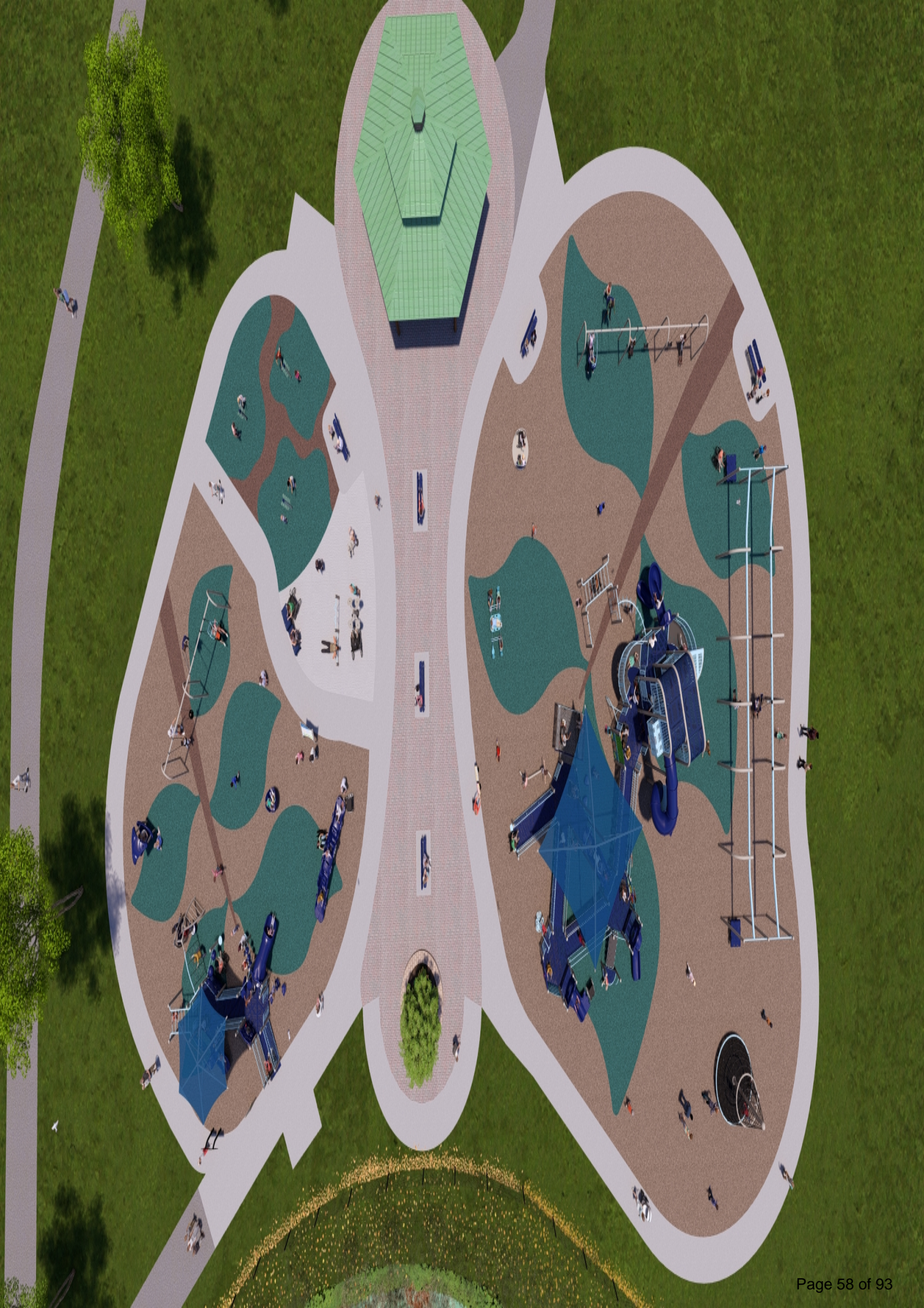
THIS PLAN REQUIRES A FINISHED GRADE RESOLUTION

North Community Park
 Rogers, MN

05-11-26

DWG. D12928L2























STAFF REPORT

**ROGERS PARKS AND
RECREATION ADVISORY
COMMISSION**

Meeting Date: May 14, 2026

Agenda Item: 6.3

Subject: 2026 Work Plan

Prepared By: Mike Bauer, Parks & Recreation Director

Overview / Background / Analysis

The Parks and Recreation Advisory Commission recommends a work plan to guide yearly staff activities. This list is for the more significant initiatives, which usually involve many hours of planning or construction.

Local Option Sales Tax Projects

Indoor Turf Facility (Complete)

Future Recreation Facility Site Improvements (Complete)

South Community Park Athletic Improvements (Complete)

Splash Pad (Complete)

I-94 Ped Crossing (On Hold, No State Bonding Money Available)

144 Tunnel (Canceled: Cost of the project escalated beyond means)

Trails:

SDLR-137th (Pending Design)

Hassan Elementary to Marie Ave (Complete)

Henrys Woods to SDLR

Cambria to 147th

Brocton Meadow to 144

Edgewater to Willindale

City Improvements to School Pool (Bonding window did not match with a project with ISD 728)

Staff Recommendation

Financial Impact:

Source Fund:

Budgeted?

Supporting Documentation

A. 2026 Work Plan

B. 2026-05-05_RogersParks-ShadeShelters-Concepts_18825

2026 Work Plan Draft

Category	Project	Status	Next Steps
Trails	Brockton Lane to Wellstead Drive (FMP)	Design	Will be part of the SDLR reconstruct 2026
Trails	SDLR -137th (LOST)Rachel Development	Partial Completion.	Next steps: RFP for design and right of way acquisition.
Facility	Event Center Donor Recognition Overall	Design	Will be using the scheduling software platform.
Park/Facility	Hennepin County Youth Sports Grant Spring Playground	TBD	
Park/Facility	Hennepin County Youth Sports Grant Fall Capital	Complete	Not sucessful for the ice arena project for 2025
Facility	Senior Center Programming Locations		Building is under construction
Parks	Sunny Side Park Playground Replacement	pre-design	Tonights Agenda
Parks	NCP Playground Replacement/Improvements		Tonights Agenda
Parks	Crow River Heights		Scheduled for first week of August
Parks	Dutch Knolls X Wave replacement		Scheduled forLast week of July
Parks	Cowley Lake House Removal		
Park/Facility	SCP Ribbon Cutting		Set Date Spring 2026
Park/Facility	SCP Concessions Operations		Working on contract
Trails	South Community Park Trails	Budgeted	CC Approved, waiting for millings from street projects.
Plan	Plan for 2026 information gathering/strategies for master plan updat	Budgeted	Started working on City 2050 Plan with the Planning department
Plan	North Side Skating Rink (Replace RAC Rink)	Budgeted	Waiting for further developments for Hassan Elemantarty adjacent site
Parks	Parking Lot and Trail Lighting	Budgeted	
Park	Parking Lot Expansion South Community Park	Budgeted	Lumen employee on medical leave.
Facility	Fieldhouse Office Buildout	Budgeted	Walls are being installed this week, Furniture is scheduled for next week.
Park	Lions Central Park Parking Lot Expansion	Budgeted	
Trails	North Community Park to Mallard Estate Trail Repaving	Budgeted	CC Approved
Park	Skye Meadows Neighborhood Park South	Budgeted	
Park/Trail	Neighborhood Park Trail Replacement	Budgeted	Augusta Prarrie and Mallard Estates Trails are Approved for this summer
Park	Neighborhood Park Picnic Pavilion	Budgeted	Anderson Engineering is working on the plans attached
Park	Neighborhood Park Hard Court	Budgeted	
	Complete		
from/last	Change from last report		
On	On Hold		



STAFF REPORT

ROGERS PARKS AND RECREATION ADVISORY COMMISSION

Meeting Date: May 14, 2026

Agenda Item: 8.1

Subject: Correspondence

Prepared By:

Overview / Background / Analysis

Staff Recommendation

Financial Impact:

Source Fund:

Budgeted?

Supporting Documentation

- A. Coorispondence May
- B. Fw_ Congratulations on your Top Project
- C. Park and Rec Staff Update May



Correspondence

Good morning,

I am a Sunnyside resident with the park actually in view of my backyard, so I have a very vested interest in it.

We have lived here since 2001 & used the park consistently while our kids were growing up. We now have 3 grandkids that we bring down there, so we are very excited about the improvements that are planned for it.

We looked at both options provided & really like the GameTime design. It looks like it has lots of options for a wide age range of kiddos & we really like the shaded play structure & SkyRun Zip Track.

Looking forward to seeing which design s chosen & hearing when the improvements will take place.

Thanks,

Beth Adair

Hello Mike,

My name is Hymarao Surabathuni, and I am a resident at 12485 Rachael Drive, Rogers in Skye Meadows.

I am writing to report an ongoing issue at my property. The park within the community is situated behind my house, and people are frequently walking through my yard as a shortcut.

Additionally, some individuals have been leaving trash, including water bottles, on my property. This has become a recurring inconvenience and concern.

I kindly request that fencing be installed to prevent access through my yard to the park and address this issue.

I have considered contacting 911 regarding this matter; however, I would prefer to resolve it through community support, as involving Police may create unnecessary concern for my family.

Thank you for your attention and support.

Sincerely,

Hymarao S

Hi Hymarao,

Thank you for reaching out and sharing your concerns. I appreciate you taking the time to describe the situation, and I want you to know that your request will be forwarded to the parks commission for review. I also want to mention that other residents in the area have requested fencing in the past, but those requests have not been approved so far. With that in mind, we are actively exploring alternative solutions to help discourage undesirable behavior at the park and around neighboring properties.

In the meantime, if you notice anyone trespassing on your private property or littering, we encourage you to contact the police, as they are best equipped to address these issues directly. I understand your preference to resolve matters within the community, but your safety and peace of mind are important.

Additionally, we have ordered new trash containers for the park, which will be installed as soon as they arrive. This should help reduce litter and contribute to a cleaner, more comfortable environment for everyone.

Thank you again for bringing this to our attention. If you have any further questions or concerns, please feel free to reach out.

Best regards,

Mike Bauer

A couple students were minorly punctured by the metal wire tying the fence to the posts. Particularly the fourth pole along the basketball court, but several other posts were noted with the same issue. About knee level. Families were contacted, tetanus shots up to date.

Thank you,

Katie Bieniek, BSN, RN, PHN, LSN
Licensed School Nurse

Hello,

Staff went there today and bent all the wires down to mitigate the hazard. Additionally, we are calling in a fence contractor for a more permanent fix.

Thank you,

Mike Bauer

Rogers Kids Business Fair to Showcase Young Entrepreneurs

ROGERS, Minn. — May 2, 2026 — Young entrepreneurs will take center stage at the inaugural Rogers Kids Business Fair, a free community event designed to build creativity, confidence and real-world business skills in children ages 4 to 17.

The fair will be held Saturday, May 2, from 10 a.m. to 1 p.m. at the Rogers Event Center on Main Street. More than 30 youth participants will run their own booths, creating, marketing and selling products and services.

Organizer Peter Mullin said the response from the local business community has been strong. “It’s like a kids lemonade stand on steroids,” Mullin said. “People love seeing kids take initiative and try to earn something on their own.”

Sponsored by Mullin Wealth Management and Mullin Podiatry, the event has also received support from local businesses, the City of Rogers and Mary Queen of Peace Catholic School.

The fair aims to provide hands-on entrepreneurial experience, helping participants develop financial literacy, communication and problem-solving skills in a fun, supportive environment. Organizers emphasize a local, family-focused atmosphere.

In addition to youth-run businesses, Jenna Pollworth Photography will offer a limited number of professional family portraits for attendees – just in time for Mother’s Day.

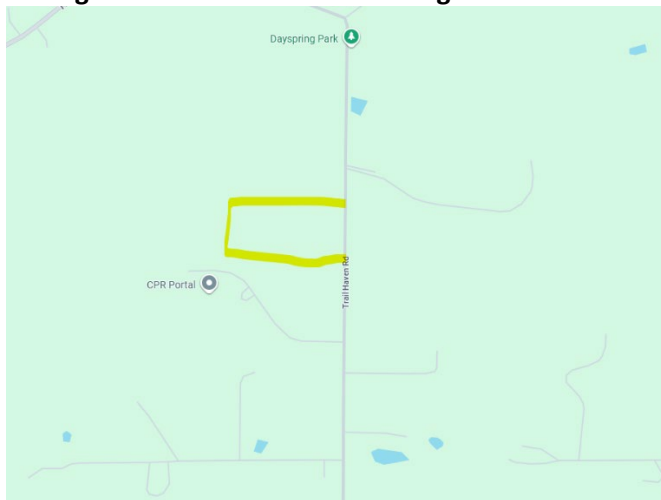
Children are still welcome to register for a free booth, though a parent or guardian must be present during the event.

The public is encouraged to attend and support the next generation of innovators. Admission is free.

For more information or to register, visit: <https://mullinllc.wixsite.com/rogers-kids-biz-fair>

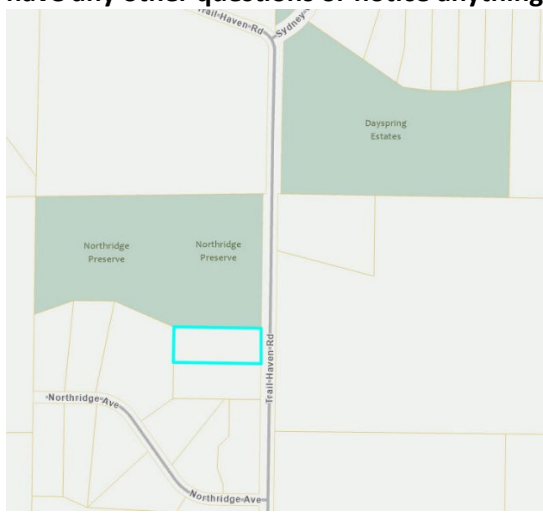
Media Contact:
Peter Mullin

There are 2 signs on this park property with St. Michael phone numbers. 497-2041. I don't think they belong there. It's north of Northridge Ave. and the 2 houses under construction.



Hi Greg,

Thank you for reaching out and bringing this to my attention. The two signs you mentioned are located on private property just south of the park land, so they aren't part of the park's signage. If you have any other questions or notice anything else out of place, please let me know.



I'll disagree with you. The property you outlined is a house under construction.

Greg Hoseth

Hi Greg,

I went out to the area and located the signs you mentioned. I appreciate you pointing them out, and I'll look into what's going on there.

Thanks again,

Mike Bauer

Mike,

When you're standing in front of those signs you'll notice a pile of dirt about 100' from the road. That was extra material the former Hassan Township public works stashed there. It should really be removed.

Greg Hoseth

Hi Greg,

I've sent this issue to Public Works for investigation. They'll be looking into the situation to determine what needs to be done next.

Thank you,

Mike Bauer

Mike,

I noticed the new signs today. Now they make sense. How did signs with a St. Michael phone number get installed?

Greg Hoseth

Name: Taylor Jurek

Subject: Proposed trails

Message: I was hoping to have a conversation with someone around the proposed trails map. I have been having issues with people on my property and I was hoping to discuss that and future use of some city of rogers owned property

Hi Taylor,

I just met with the City Planner, and he is not aware of any planned use for the City property to the east of your property, PID 2712023240074. I have reached out to public works, since they have a booster station and a stormwater pond on that lot, to see if any other uses are planned for the lot, and whether there is a possibility of signs there. I will follow up once I learn more.

Thank you,

Mike Bauer

Thank you Mike! I appreciate the help.

I can also put in a sign, I was just hesitant because it seems like work is to be done in that area still.

I look forward to hearing from you

From: Ryan Wilson

Sent: Monday, April 13, 2026 9:14 AM

To: Mike Bauer <mbauer@rogersmn.gov>

Subject: Re: Park Behind House - Rachael Drive , Rogers

Good Morning,

I have some stuff for you after the meeting last week, but first I wanted to quickly reach out and see if you can help. After looking online it says the parks department is who to contact. We noticed that a duck has laid eggs underneath the playground equipment at the park and we are looking to get someone here to protect them asap.

BEst,

Ryan

Hi Ryan,

Someone is on their way to check it out.

Thank you,

Subject: Re: Park Behind House - Rachael Drive , Rogers



Mike,

First, thank you for getting someone over to duck eggs so quickly. That was great. We just hope the neighborhood will be respectful of the nest.

I have a few more important things to discuss. I have pictures attached to reference for the questions below.

1.) For some reason Lennar put our sump pump exit drain facing in what seems like the wrong direction, almost directed uphill, and now with the giant hill that the park is on it seems to just funnel water into or at the sump outlet. I don't know who, but someone is going to have to make sure our house is protected from this backing up. My guess would be Lennar will put the responsibility on you since it was the city that installed the park and did the grading of the land. In addition to that we are concerned for the amount of water that is gathering in our yard. We will need to have this addressed.



2.) The next question is about the double rows of black barriers installed. What is the plan with these? When will these be removed?

3.) When will garbage receptacles be installed? One of the pictures shows all the garbage my wife picked up Monday morning after the weekend. I don't know what it is, but people are constantly leaving garbage lying around. This is not something that we want to have to clean up. This should not be on us. We need the garbage quickly, and we will always keep pushing for a barrier between the park and our yards whether a fence or some sort of additional trees to help with this.

4.) We want to ask about something that was mentioned at the meeting. It was heard that there will be a light installed in the parking lot. We were under the impression that NO lights were to be installed at this park. Doing so will only encourage people to stay past the posted hours of the park. Which, when I say this I speak for all the neighbors, we all definitely do not want.

5.) Lastly, we have a request. Since it's been said that there's no room in the budget to do anything right now, maybe there is a way you can do something for us in the meantime. We'd like to see the 4 seated spring chair piece of equipment replaced with another option. When someone gets hurt it will be because of this piece. Plus, there is ZERO chance this is designed for the age ranges the park is claimed to be for. The chairs are designed for adult sized people and that's exactly all it attracts. It's usually used by crazy teenagers, which the park is not meant for, trying to break it or it becomes a resting place for parents to sit (we have many photos and videos of both). If there was something more age appropriate installed maybe the park would get used correctly by its intended audience and be less of a nuisance for all of us living here and for the parents that want their young kids to enjoy the park.

We look forward to hearing from you.

Thank you,

Ryan
Hi Ryan,

Regarding the budget, even though the original allocation for the park has been spent, we can explore alternatives. While I can't make promises about immediate changes, we are looking to see what has been done in other parks and neighborhoods. I will follow up as we gather more information.

1. For the discharge lines, public works should have been there yesterday or today to shovel out any sediment, giving the water an exit, and take pictures of before and after.
2. The general contractor has to confirm that the grass is 70% or more covered for silt fence removal.
3. The park maintenance department is putting a temporary cart at the park until the new cans arrive in May.
4. The parking lot light included in the park plans is designed to provide safe visibility during park hours, deter unwanted activity and crime after hours, and operate automatically with scheduled on/off controls and motion activated lighting during non park hours. This is a feature that was on page 13 of the construction documents that were provided and also the plans online.
5. I will forward your request to the Parks & Recreation Advisory Commission for review and discussion. In the meantime, I want to provide some clarity on the design and intended use of this

equipment from the manufacturer: All Playworld components undergo rigorous third party testing through IPEMA (International Playground Equipment Manufacturers Association) to ensure compliance with all applicable safety standards. The feature in question, the Accessible Seesaw (Model ZZXX0600), is certified for ages 2–12 and engineered to accommodate children ranging in size from the 5th percentile 2 year old to the 95th percentile 12 year old, resulting in the larger seat design. The seats are intentionally designed to allow children of varying abilities, including those who use mobility devices, to transfer independently and safely. The equipment promotes the development of balance, proprioception, and the vestibular system while supporting inclusive play. The product meets ASTM F1487, CSA Z614, CPSC 325, and EN1176 standards as validated by TÜV SÜD through IPEMA certification.

I understand this doesn't change the experience you're describing. Misuse by older teens can still occur even when the equipment meets all safety and age range standards.

As the advisory commission reviews your request, they will consider both the certified purpose of the equipment and the practical challenges you've highlighted regarding how the feature is being used day to day.

Sincerely,

Mike Bauer

Mike,

Thank you for the quick reply and the information.

I Thought I would tell you first that the eggs were broken by the troublesome kids that hang out at the park. It's unfortunate, but I appreciate the effort to try and guard them. In addition to that, the day this happened the cops were called to deescalate a situation with the teenagers at the park. We understand the benefit of a community park, but already having all the issues, we are not off to good start. We also understand you cannot control who goes to the park and it is not your responsibility to "parent" the kids, but there are things that can be done to help those that live here. The city putting the park where they did changed everything for the people that live next to it. Some forever homes have been ruined. I think adding some privacy/protection for those homes is the least the city can do. I look forward to hearing more on this.

In regard to the information you shared about our discharge line having the sediment removed helps, however I'm worried about the long term. Having that cleaned out regularly doesn't seem like the best solution. I don't know what that solution is, so maybe I could meet with the public works rep and see what can be done. When the brush/tress that were there on our property were removed, I think it got graded or dug out too low and it's affecting portions of our yard.

Thank you for sharing the info on the seesaw. I definitely respect that it should be accessible to everyone, unfortunately it's intended use is not what it's being used for. In fact, I think it's already broken. Not sure who needs to look at it, but it already making weird noises, like something is loose or damaged, which is not surprising if you saw what happens with it.

Thank You,

Ryan
Hi Mike,

I hope your week is going well.

I wanted to share a photo that better highlights our concern. Our property line is about half way through the puddle shown. We will need to have this addressed. Especially if a fence is going to have to be installed. Let us know your thoughts on what you can be done..



Thank you,

Ryan

Hi Ryan,

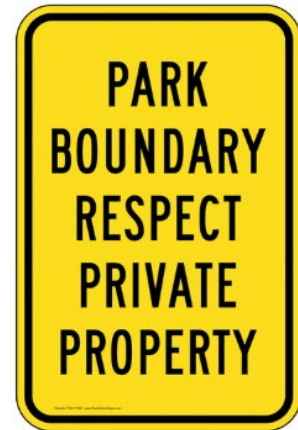
I have passed your drainage issue along to public works for their review and follow-up. If the team replies to me, I'll update you right away. They might also reach out to you directly to discuss the situation and next steps.

Additionally, we are in the process of ordering signs to clearly mark the park's boundary. Once the signs arrive, they will be installed along the edge of the park property for clarity and safety. You may notice stakes and location markers being placed soon. These are part of the preparations to ensure the signs are installed safely.

If you have any other questions or notice anything else, please feel free to keep me posted. I'll stay in touch as I hear more.

Best regards,

Mike Bauer



Keeping you posted. I just submitted a complaint on the Public Works website. Significant trash is continuing to migrate onto our private property from foot traffic at Territorial Park. This is quickly becoming a nuisance and requires near daily cleanup following nice days. The photos and video I shared give context and are similar to what have been shared previously. It slides down the hill and eventually ends in our yard. The parks trash receptacles and barriers to keep both trash and children off our property is inadequate. Children/teenagers walk or ride their scooters between our homes frequently. Just last night we had what appeared to be 3 teenagers arguing well into our yard. Also, the adjacent ponds and wetland are filling with litter. When will the garbages and signs be coming? Though I am not confident this will stop the problem. It needs to be addressed please.

-Frustrated homeowners 😞



From: Matthew Nelson <info@projectmyneighborhood.org>

Sent: Monday, April 20, 2026 11:06 PM

To: Mike Bauer <mbauer@rogersmn.gov>

Subject: Project My Neighborhood Blaster Battles info

Hello Mike,

My name is Matt Nelson from Project My Neighborhood. We put-on large-scale Nerf Battles and Water Wars for schools, communities and Youth Groups. Our big initiative includes our Toys For Tots campaign where we put on large scale nerf battles asking Toy donations and we invite the USMC to participate and collect the toys.

To promote this event, we have been working with cities like Blaine, Maple Grove and Champlin where we hand out information about our organization in the parade and follow it up with a local nerf battle. I made this inquiry to Peggy Warfield and Heidi Haaland for Rockin Rogers Parade and they gave me your name as a contact for Rogers.

I've been working with Chris Morrow with Maple Grove Parks and Rec for 5 years now putting on pop up events for the Parks and Rec Department in the Maple Grove Dome and Fernbrook Fields. I wanted to inquire if the City of Rogers Parks and Rec would be interested in doing something in the new fieldhouse during off peak hours.

Happy to chat. I included some photos to give you a better idea of what our events look like. They would be all ages and we can handle capacities up to 500 if needed.

Thanks,

Matt

Subject: RE: Project My Neighborhood Blaster Battles info

Hi Matt,

Let's work on setting something up for the Sunday of Rockin Rogers Weekend. Please coordinate the schedule with Rachael who is copied here.

Thank you,

Mike Bauer

Name: Dan Hoskins

Subject: Baseball field at the Rogers middle school

Message: Twice now our people have had to mow the baseball diamond before the game!! And rake the dirt part of the infield because it was terrible! This is a reflection of the parks department and the city of Rogers when teams from other area come to play. I would like to know what it takes for the City of Rogers along with the Parks Department to support the youth of this area? It just seems like it's a challenge to get our kids any support from this city! My grandkids play baseball, soccer, hockey and basketball. Tonight at the middle school diamond we mowed the infield but the outfield was too tall! Just curious as to what the problem is! Sorry for the complaint but I don't want the city to get a bad reputation, great place, Rogers MN.

Hi Dan,

Thank you for reaching out and sharing your concerns about the baseball field at Rogers Middle School. I appreciate your commitment to supporting youth sports and your willingness to advocate for a great experience for everyone involved.

To give you some background, all the city's full-sized ballfields are governed by joint powers agreements with ISD 728. While this arrangement makes it easier for community groups to access the fields, it also means maintenance responsibilities can get a bit complicated. Specifically, ISD 728 owns the baseball improvements and is responsible for mowing the fields and maintaining the facility. The City of Rogers handles dragging and chalking the fields for community groups.

I wanted to check if the infield was not dragged as expected? I am currently looking into what happened with the field setup that day, but I do know that our team had eight other field setups scheduled, and this was the last one of the day.

I've already forwarded your concerns about the grass to ISD 728, and they should be reaching out to you directly to address the issue. Please let me know if there's anything else I can help with, or if you have additional feedback.

Thanks again for your email and for your ongoing support of the Rogers community.

Mike Bauer

I understand totally and appreciate your reply. And actually i can see how much the Rogers Area has been growing and by the number of students in my grandchildren's grades, i can see where things could get very busy for the city and Parks Dept.

Thank you again for taking the time to answer my concerns,

Danny Hoskins

Mike Bauer

From: Doran Cote
Sent: Monday, May 4, 2026 6:48 PM
To: Mike Bauer; Steve Stahmer; Stacy Scharber
Subject: Fw: Congratulations on your Top Project

wow!

Get [Outlook for iOS](#)

From: David Bohlander <dbohlander@finance-commerce.com>
Sent: Monday, May 4, 2026 5:00:30 PM
To: Doran Cote <dcote@rogersmn.gov>
Subject: Congratulations on your Top Project

Congratulations, Doran,

It is a pleasure to share this wonderful news with you — your project, Rogers Indoor Turf Facility, has been selected as one of the Top Projects of 2025 by [Finance & Commerce](#).

This honor highlights construction projects completed by teams that excelled by solving difficult problems, implementing creative designs, using innovative construction techniques and demonstrating cooperation among contractors and management while keeping sustainability in mind.

This project being chosen is no small distinction — it demonstrates the lasting impression you've made within Minnesota's construction community.

Your project and its team will be celebrated at the July 23 [Top Projects event](#) at Quincy Hall in northeast Minneapolis and featured in the Finance & Commerce Top Projects publication in July.

Additionally, EVG Media — our exclusive licensed logo and reprint partner — will reach out ahead of the publication date with brand standards details.

Congratulations again on this well-deserved recognition. We're honored to celebrate you and your accomplishments.

Please respond to this email with your acceptance of this award.

David Bohlander

Editor in Chief

Finance & Commerce

Direct: 612-584-1527 | Cell: 651-354-8053



Staff Updates

We were excited to host this year's Minnesota Ice Arena Managers Association (MIAMA) Spring Workshop and tradeshow at the TruStone Center Ice Arena and HealthPartners Fieldhouse today! Thank you, Mayor Klick, for addressing our guests, and thank you, MIAMA and President Eric Edlund, for choosing our facility, and thank you to all who attended today from across Minnesota and the upper Midwest. **Senior Pickleball**



Date	Participants	Revenue
4/3/2026	No PB - Easter weekend	
4/10/2026	10	\$50.00
4/17/2026	14	\$70.00
4/24/2026	9	\$45.00
Total	33	\$165.00

Learn to Skate

Summer Learn to Skate classes are open for registration

Summer 1: Tues, Wed, Thurs June 16 – June 25

Summer 2: Tues, Wed, Thurs, July 14 – July 23

Facebook post to advertise as well

Facility Rentals

April Revenue

Facility	Rentals	Revenue
LCP Sunroom		
Private Rentals	8	\$1,581.25
City of Rogers	0	
LCP Pavilion		
Private Rentals	0	\$0.00
City of Rogers	0	
LCP Combo		
Private Rentals	3	\$735.00
City of Rogers	0	
NCP Pavilion		
Private Rentals	0	\$0.00
City of Rogers	0	
Total		\$2,316.25

2026 Revenue January-March: \$4,685.00

2026 Revenue: \$21,982.50

Entertainment in the Park

- Entertainment is set for the 2026 season
- Rogers Lions Club are partnering for the Full Size bands
 - June 24
 - July 8
 - July 22
 - Aug 5
 - Aug 19
- Look into creating a logo for EITP for 2027, examples from Ramsey, Elk River, and Big Lake attached for reference

ROGERS PARKS & RECREATION 2026

ENTERTAINMENT In The PARK

At the 21st Century Bank Event Center - 12716 Main Street
Events will be hosted indoors in cases of inclement weather

BANDS AND CONCERTS - 6:00PM

June 24	Sawyer's Dream	Americana Hits
July 8	Todd Anderson	Sinatra Tribute
July 22	Hollywood Blvd	Rock and Roll Hits
Aug 5	Taylor's Version	Taylor Swift Tribute
Aug 19	Shane Martin	Country Hits

CHILDREN'S ENTERTAINMENT - 6:00PM

July 15	The Teddy Bear Band	Kids Band
July 29	Bob the Beachcomber	Kids Band
Aug 12	Science Heroes	Interactive Story
Aug 26	The Jolly Pops	Kids Band

MOVIES IN THE PARK

Aug 6	K-Pop Demon Hunters (2025)	8:45pm
Aug 13	Meet the Robinsons (2007)	8:30pm
Aug 20	How to Train Your Dragon (2025)	8:15pm
Aug 27	Movie in MY Park!	8:00pm

FARMERS MARKET 3:00-6:30PM

Wednesdays June 10 - October 7 No Market July 1



ROGERS
Parks & Recreation

763-428-1033
www.rogersmn.gov/rec



Kids Biz Fair

- Attended the Rogers Kids Biz Fair ran by Mullin Wealth Management
- Handed out reuseable ice packs, stress balls, doggy bags, and flyers for Entertainment in the Park & Learn to Skate
- Fun event to participate in and had good attendance, will look forward to attending again or partnering with Mullin to run the fair together

April 2026 Update

Rogers Senior Center Report

Dining Program

- **Total Meals Served: 98**
- Dining was paused during the first week for updates, newsletter preparation, and monthly meetings. A return to a regular schedule is anticipated once the Rec Coordinator 55+ position is finalized.
- **Special Events:**
 - **Garden of Gratitude Brunch (Apr 14):** This was our annual Volunteer Appreciation Luncheon, that thanked our volunteers with a garden tea party themed brunch, a photo slideshow, and a small gift. We had approximately 20 in attendance.



(Apr 8): A record players followed by a and celebration of April birthdays. Attendance: 48 meals served.



○ **Birthday Bingo Bash** attendance of 30 Bingo catered pot roast lunch



Move Well Series

- Spring session continued until Wednesday, April 29

Other Highlights

- Regular activities continued, including Book Club, Mahjong, Card Club, Grocery Bus service, Quilt Sewciety meeting, Card Creation Club, Caregiver Services, Tech Clinic, Free Bread Friday, and Community Cafe.
- The Jammers have opted to pause their regular monthly jam sessions until we can re-evaluate the space options when the new senior space opens in 2027.

Upcoming Programs – May 2026

Special Events

- **Sunny Side Social (May 12):** A cheerful gathering to enjoy the comedic entertainment of Jason Douglas, followed by a build your own burrito bowl for lunch.
- **Runestone Trip (May 13):** Cancelled due to low enrollment
- **Saint Paul Saints VIP Game (May 19):** A day at the ballpark with a 90 minute pre-game buffet, and VIP seating!
- **Birthday Bingo Bash (May 20):** This month is Ca\$h Bingo, led by the Rogers Senior Board, and catered pot roast lunch celebrating May birthdays.

Programs

- **Move Well programs start:** Classes in Tai Chi, WalkWise, and Stride & Unwind
- **Foot Care Clinic (May 14)**
- **Smart Cookie Series (May 20):** Come learn what MN Aging Pathways can do for you! Free, but registration required. Treats sponsored by Norbella Senior Living.
- **Trivia Social (May 21):** Hosted by the Rogers Senior Board.

Clubs & Activities

- Card Club: Mondays for Mahjong, and Tuesday-Thursday afternoons for other assorted card games.
- Card Creation Club: Meets every Monday to create upcycled cards to be sold as a fundraiser for the Rogers Senior Board.
- Quilt Sewciety: First Tuesday of the month.
- Book Club: Fourth Wednesday – May title is Nightingale by Kristin Hannah

Grocery Bus

- Twice monthly trips to WalMart; registration required.

Overall Participation Summary

April was an active and productive month across our 55+ programs, even with a brief pause in dining services during the first week for operational updates, newsletter preparation, and monthly meetings. Participation remained strong throughout the month as programs resumed and special events drew exceptional engagement.

This month also marked an important staffing update: the City has officially hired a Rental Coordinator, allowing for a more streamlined approach to facility reservations and customer support. With this addition, Teresa Schmiedlin has transitioned into a full-time Recreation Coordinator role dedicated to the 55+ programs, supporting continued growth and consistency within our senior services.

The Dining Program served a total of 98 meals in April. Highlights included the Garden of Gratitude Brunch on April 14, our annual Volunteer Appreciation Luncheon. Approximately 20 volunteers attended and enjoyed a garden tea party-themed brunch, complete with a photo slideshow and small appreciation gifts. Additionally, the Birthday Bingo Bash on April 8 saw record participation, with 30 Bingo players and a total of 48 meals served as part of the catered pot roast lunch and birthday celebration.

The Move Well Series continued its spring session through Wednesday, April 29, offering ongoing wellness opportunities for participants.

Regularly scheduled activities remained steady, including Book Club, Mahjong, Card Club, the Grocery Bus service, Quilt Sewciety, Card Creation Club, Caregiver Services, Tech Clinic, Free Bread Friday, and Community Café. One notable program update: The Jammers have elected to pause their monthly jam sessions until space options can be re-evaluated with the opening of the new senior space in 2027.

Overall, April reflected consistent engagement across programs, strong participation in special events, and positive momentum as staffing enhancements support the continued expansion of our 55+ offerings.

Event Center

Events in April:

- 12 Non-profit (reduced or no fee)
- 19 City (no fee)
- 5 Paid (full fee)

March Booking Statistics:

- 9 contracts processed for 2026 events
- 1 contracts processed for 2027 events
- 19 new inquiries about future rentals
- 10 facility tours

Event Center Notes:

- Key lockbox fixed (Battery Issue)
- Metal tables and chairs arrived for patio use

21st Century Bank Event Center Use & Revenue Statistics for April 2026:

Account Type	Hours Used	Total Revenue
Individual	37	\$ 4,580.00
Internal	13	\$ 0.00
Non-Profit	53	\$ 2,000.00
Total	103	\$ 6580.00

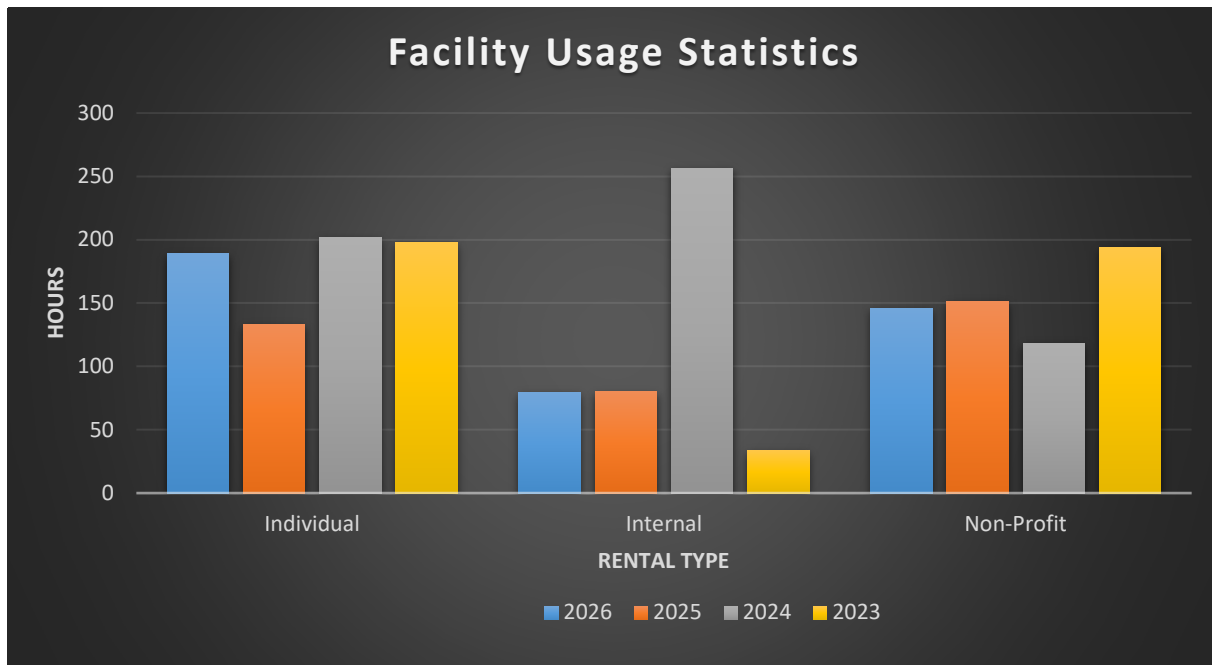
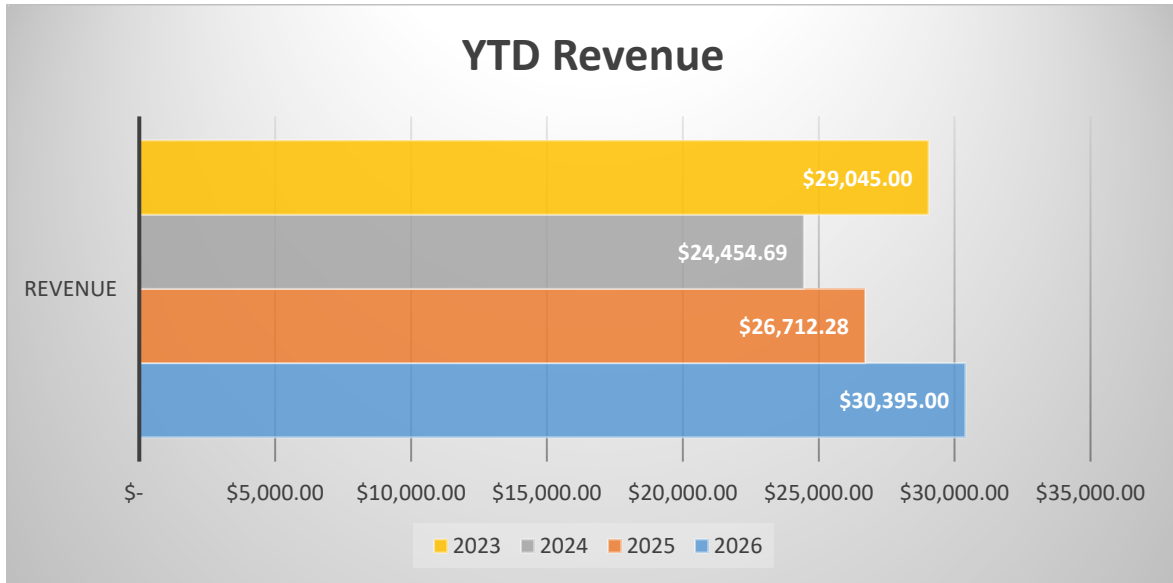
21st Century Bank Event Center Projected Use & Revenue for May 2026:

Account Type	Hours	Total Revenue
Individual	102.00	\$ 16,010.00
Internal	37.50	\$ 0.00
Non-Profit	75.50	\$ 3,667.50
Total	215.00	\$ 19,677.50

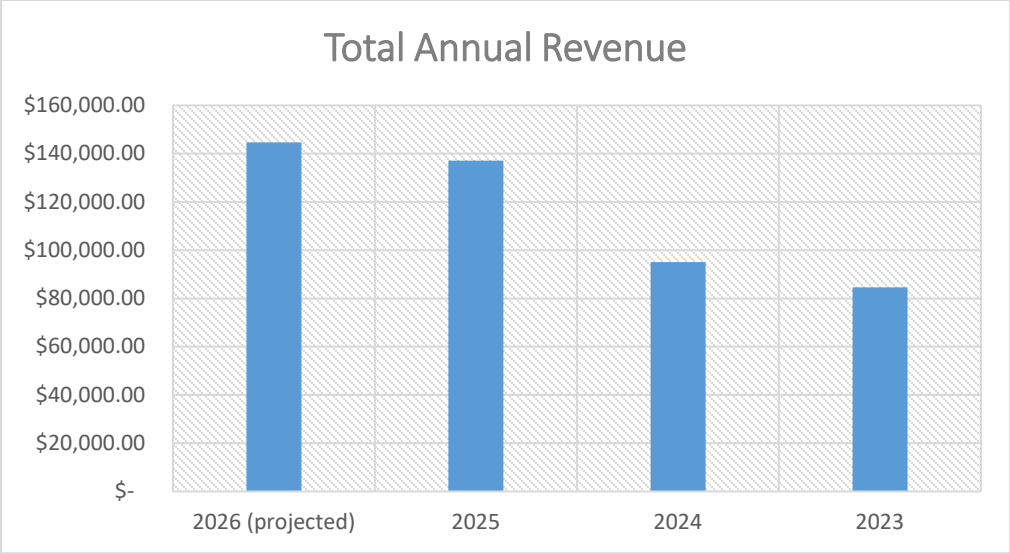
21st Century Bank Event Center Booked Use & Revenue for 2026 (as of 5/5/2026):

Account Type	Hours	Total Revenue
Individual	667.23	\$ 115912.50
Internal	611.75	\$ 550.00
Non-Profit	634.50	\$ 28,208.75
Total	1913.48	\$ 144,671.25

2026 YTD vs 2023-2025 YTD Revenue & Usage Statistics:



“Individual” are all rentals done by the public. “Internal” are those done by City Departments (Police, Fire, Elections, Public Works, Finance). “Non-Profit” are all renters who qualify for 501 c3 status.



April 2026 recap

April demonstrated steady utilization of the Event Center, with a combined 36 events across non-profit, city, and paid rentals, supported by ongoing administrative activity including 19 new inquiries, 10 facility tours, and multiple future-year contract approvals. Total April usage reached 103 hours with \$6,580 in revenue, while May projections indicate substantial growth with 215 scheduled hours and nearly \$20,000 in anticipated revenue. Year-to-date totals now reflect 1,913.48 booked hours and \$144,671.25 in revenue, underscoring sustained demand across all users.

Mr. Brown continued progressing through onboarding while taking on greater operational responsibilities. He completed training across multiple facilities and systems, supported rental coordination through FinnlySport, and assisted with bookings for several city spaces. He contributed to facility improvements by identifying potential upgrades and advancing work on virtual tour capabilities in collaboration with IT and Communications. Additionally, he managed staff scheduling, processed damage deposits, and obtained his purchase card for future supply purchases. Overall, the month reflected meaningful growth in system proficiency, facility operations, and project coordination.